

Mile End Park Management Plan 2022-23 (Annual)

Last revised in January 2022



London Borough of Tower Hamlets
Parks & Open Spaces
Arts, Parks & Events Services
Children & Culture Directorate



Contents

1	Introduction	
	1.1 How the Management Plan is organised	4
	Political and Strategic Context	
	2.1 Demography of the Borough	5
	2.2 Democracy	5
	2.3 Council Departments	5
2	2.4 Open Space Strategy	6
	2.5 Community Plan	6
	2.6 Parks Management	6
	2.7 Organogram of Parks & Open Spaces Team	7
	2.8 Organogram of Mile End Park Structure	8
	2.9 Organogram of Green Team	9
3	Fact Sheet	10
	History and Context	
	4.1 Summary	12
4	4.2 Stretching back in time	12
	4.3 A park for people	12-13
	4.4 Constructing the dream	13
	Site Overview	
	5.1 The Park deconstructed	14
	5.2 Amenities	14
	5.2.1 Amenities south to north (to Green Bridge)	14
	5.2.2 Amenities Green Bridge to north of Park	15
	5.3 Wennington Green	15
5	5.4 The Ecology Park	15-16
	5.5 The Art Park	16-17
	5.6 The Green Bridge and Terrace Garden	17-18
	5.7 Adventure Park	19-20
	5.8 The Sport Park	20
	5.9 The Children's Play Park	20-21
	5.10 Interlinking Elements	21-23
	5.11 Map of amenities within the park	24
	A Welcoming Place	
6	6.1 Objectives	25
	6.2 Accessibility	25
	6.3 A visible presence	25
	6.4 Signage	25
	A Healthy, Safe and Secure Place	
	7.1 Objectives	26
	7.2 Play Equipment	26
7	7.3 Security	26
	7.4 Tower Hamlets Police and Community Safety	27
	7.5 Tower Hamlets Parks & Open Spaces Byelaws	27
	7.6 Dog Control	28
	7.7 Risk Reduction and Management	28
	Well Maintained and Clean	
	8.1 Objectives	29
	8.2 Grounds Maintenance	29
	8.3 Litter clearance	29
8	8.4 Repairs and graffiti removal	29-30
	8.5 Park furniture	30
	8.6 Cleanliness	30
	8.7 Park lighting and CCTV	30
	8.8 Financial Allocation	30

	A Sustainable Park	
	9.1 Objectives	31
	9.2 Quality Audit – Green Flag Awards	31
	9.3 Carbon Management Plan	31
	9.4 Grass maintenance	32
	9.5 Planting	32
	9.6 Tree Strategy	33
	9.7 Green Procurement	33
	9.8 Recycling of green waste, and other waste	34
	9.9 Pesticides and Fertilisers	34
	9.10 Water Conservation	34
	9.11 Building Management	35
	Conservation and Heritage	
10	10.1 Objectives	36
	10.2 Background	36-37
	10.3 LBTH Local Biodiversity Action Plan 2019-2024	38
	Community Involvement	
	11.1 Objectives	39
	11.2 Community Involvement	39
11	11.3 The Friends	39
	11.4 Volunteering	40-41
	11.5 Events	41
	11.6 Summer Programme	41-43
	Marketing and Publicity	
	12.1 Objectives	44
	12.2.1 Press coverage	44
12	12.2.2 Interpretation	44
	12.4 Signage	45
	12.5 Publicity in literature	47
	12.6 Publicity with local organisations	47
	Implementing of Management Plan	
	13.1 Objectives	48
	13.2 Strategic Context	48
13	13.3 Monitoring and reviewing the plan	48
	13.4 Performance Management	48
	13.5 Service Standards	49
	13.6 Design principles for Tower Hamlets Parks and Open Spaces	49
14	14.1 Previous Year's Action Plan & Progress 2021-22	51-55
	14.2 Objectives for 2022-23	56-58
	Appendix A	59
	A1	
	A2	
15	Appendix B	60
	Appendix C1	61-64
	Appendix C2	
	Contact details	65

1 Introduction

This is an annual plan for the 2022-23 period, with aim to create a five-year plan commencing from 2023-24 period, where we hope to be in a better position with Covid-19 and the impact it will have on our resources. The previous five-year plan was between 2016-21. Due to the challenges and impact of the Corid-19 period, and the uncertainty of the Council's current resources, an interim one-year plan will allow the Council to focus on priorities for this year only.

Mile End Park is a unique and dynamic environment bisecting one of London's most deprived inner-city areas – the London Borough of Tower Hamlets. Made up of a string of zones offering everything from peace and quiet, space for activities and a place to relax and enjoy nature, Mile End Park follows the Regent's Canal from close to the Thames to Victoria Park in the north where Tower Hamlets meets the neighbouring Borough of Hackney.

The Park meanders through the rich industrial and social history of the area, offers residents a breath of the country and is managed to promote sustainability and good practice. This Management Plan is a document that captures both the history of the Park as well as the values and methods used in managing and maintaining it.

Specifically, this Management Plan aims to show:

- ***The history of the Park and how these features are maintained.***
- ***How the Park is promoted to both the local and wider community.***
- ***How sustainable methods are introduced to manage the Park using a range of best horticultural practice.***
- ***How the Park provides a safe, healthy, and secure environment that meets the needs of its users.***
- ***How the local community are consulted and engaged to work towards a shared vision.***

1.1 How the Management Plan is organised

The Management Plan has a contents list to guide the reader. It is laid out to show the history and development of the Park and offers a description of the various zones within the Park. The main focus of the Management Plan has been organised to fit with the objectives of the Green Flag which set the quality standards for this park:

- ***A Welcoming Place***
- ***Health, Safe and Secure***
- ***Well Maintained and Clean***
- ***Environmental Management***
- ***Biodiversity, Landscape and Management***
- ***Community Involvement***
- ***Marketing and Communication***
- ***Management***

Annual and longer-term objectives will be drawn up according to the Green Flag criteria's where necessary. These action plans will be appended in each section of the plan and updating as a live document with progress

2 Political and Strategic Context

2.1 Demography of the Borough

According to the Census ONS 2011 mid-year population projection, the borough's population was 304,900 in June 2017, with a projected rise to 364,500 by 2026. The 2016 figure is the first time the area's population has exceeded 300,000 since before the Second World War.

The borough's population is projected to grow more than 2x as fast as London and 3x as fast as England between 2016 and 2026.

Tower Hamlets has seen drastic population change in recent decades, growing faster than any other local authority in the country. Over the last 30 years, the borough population more than doubled, rising from 144,800 in 1985 to 295,200 in 2015.¹ This briefing will examine how the population is expected to change over the next ten years using population projections, primarily those produced by the Greater London Authority (GLA).

This briefing presents the Greater London Authority's population projections for the borough and breakdowns by MSOA, age group and ethnic group. The projections expect Tower Hamlets to be the fastest growing borough in London over the next ten years, reaching a population of 364,500 in 2026.

The borough includes one of the highest Muslim populations in the country and has an established British Bangladeshi and Pakistani business and residential community.

2.2 Democracy

The council operates an elected Mayor and Cabinet form of executive decision-making, with an overview and scrutiny committee, a standards committee, and various other decision-making and regulatory committees. As of 2021, the breakdown of councilors by party include: 40 Labour, 2 Aspire, 1 Independent Group and 1 Conservative.

2.3 Council Departments

The council employs around 10,500 staff in six directorates around 4,800 of whom are based in schools. The corporate structure is designed to support the council's objective of ensuring the provision of services that are responsive to the needs of individuals and communities and integrated at the point of delivery.

The council management structure consists of five directorates:

- **Governance** directorate comprises Democratic Services, Legal Services, including Electoral Services, Communications and the Strategy and Performance Team.
- **Resources** directorate comprises of the financial, human and ICT resources functions.
- **Place** directorate
- **Health, Adults and Community** directorate
- **Children's Services** directorate is committed to further improving outcomes for children and young people.

The Parks and Open Spaces Team are a part of the Arts, Parks and Events Services who sit within the Children's Service Directorate.

2.4 Open Space Strategy

The Tower Hamlets parks and open spaces strategy aims to ensure that the borough's parks and open spaces reflect the shared vision of the council and its partners: to improve the quality of life for everyone living and working in Tower Hamlets. Parks and open spaces are important elements of all the borough's community plan themes: living safely; living well; creating and sharing prosperity; learning achievement, leisure, and excellent public services.

The strategy details how the council and its partners plan to achieve and maintain the highest quality parks and open spaces that are safe and accessible to all the borough's residents and visitors. The strategy also focuses on sustainability. It outlines the council's plan to cater for the future needs of the community and the environment in the design and use of open spaces.

The strategy has been developed in consultation with local people, residents' groups, community groups and public bodies with an interest in open space issues. Each year, the council carries out improvements to parks and open spaces, as identified in the open spaces' strategy. This includes refurbishment to play areas, park furniture, planting and signage.

https://www.towerhamlets.gov.uk/Documents/Leisure-and-culture/Parks-and-open-spaces/Open_Space_Strategy_2017.pdf

2.5 Community Plan

The Community Plan provides the Tower Hamlets Partnership's long-term vision for the borough, articulating local aspirations, needs and priorities. It informs all other strategies and delivery plans of the partnership, including the council's Strategic Plan.

The plan was developed in consultation with residents and service users, community and voluntary sector organisations, and a range of representative groups and forums, as well as members of the council. It outlines how the partnership will work together to improve the lives of all those who live and work in the borough and continues the existing focus on tackling poverty and social exclusion in Tower Hamlets, though with a new emphasis on fairness, as suggested by our local Fairness Commission. It also continues to prioritise equality, cohesion and community leadership through the theme of "One Tower Hamlets".

https://www.towerhamlets.gov.uk/lgnl/community_and_living/community_plan/tower_hamlets_plan.aspx

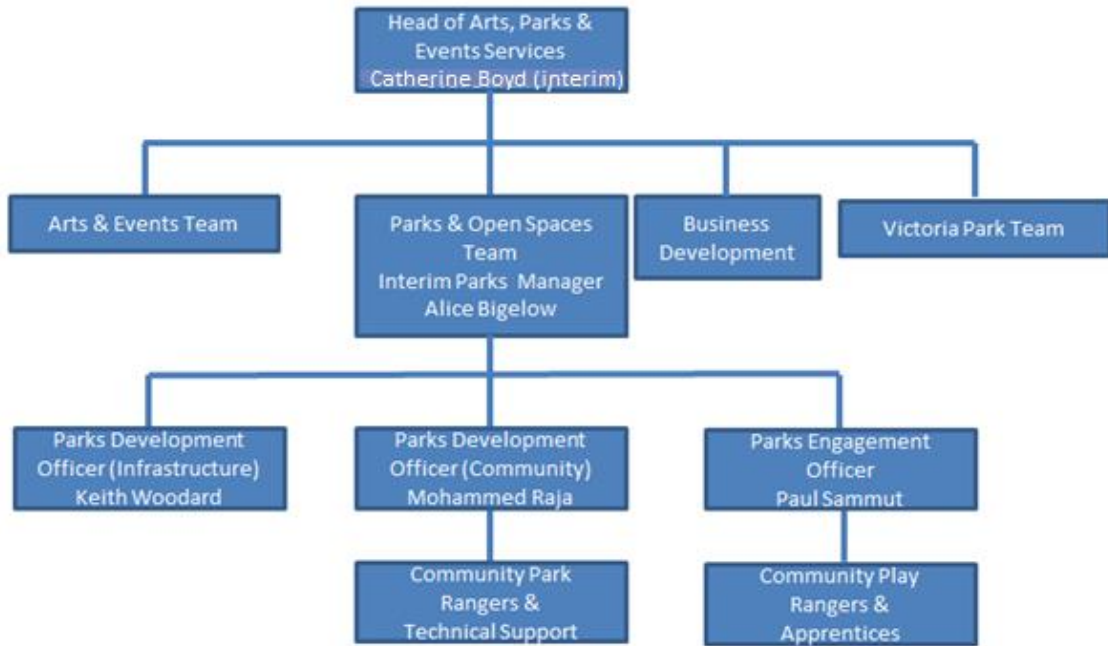
2.6 Parks Management

The Mile End Parks Management falls within the Tower Hamlets Directorate of Children's Services, Division of Sports, Leisure and Culture, Arts, Parks and Events Section. The Mile End Park Management Team is managed by the Tower Hamlets Parks Manager and includes a number of officers and Park Rangers. This team works alongside the Victoria Park team which is under separate management.

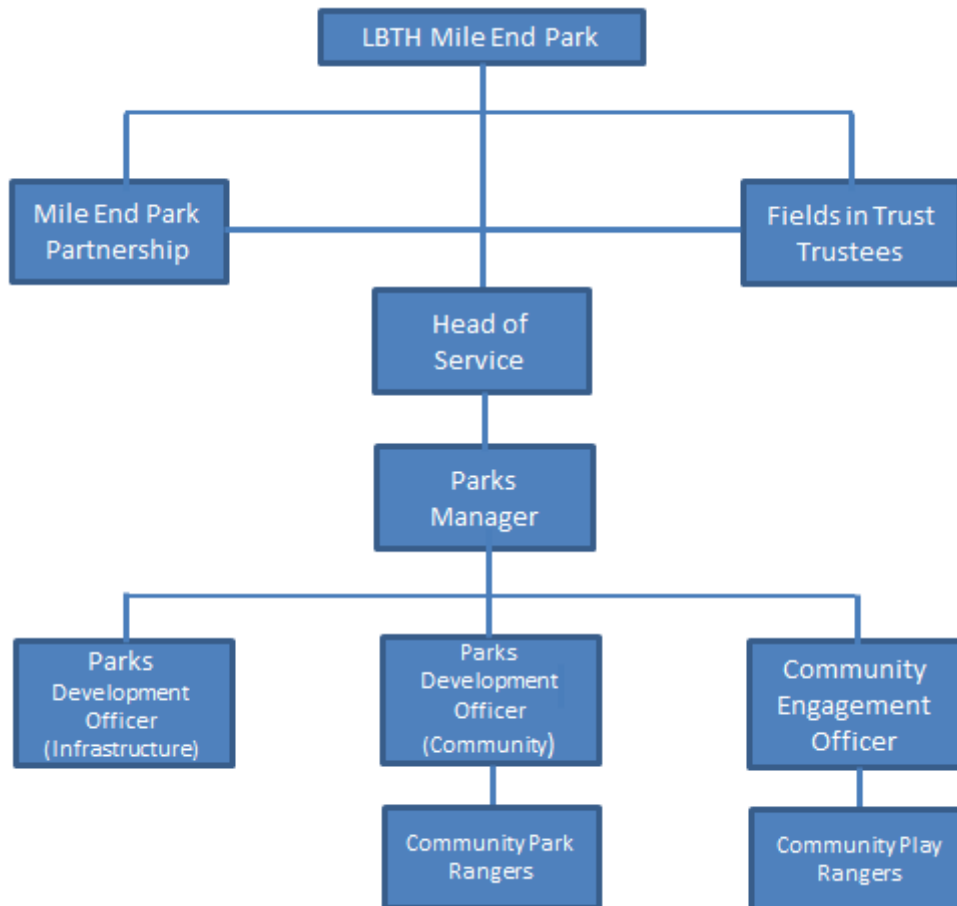
The horticultural and grounds maintenance is carried out by The Green Team falling under the Tower Hamlets Place Directorate, Public Realm Division.

The Mile End Park management falls within the purview of the Fields in Trust, an independent charitable trust working alongside Tower Hamlets council. The site is dual owned by the two organisations.

2.7 Organogram of Parks & Open Spaces Team

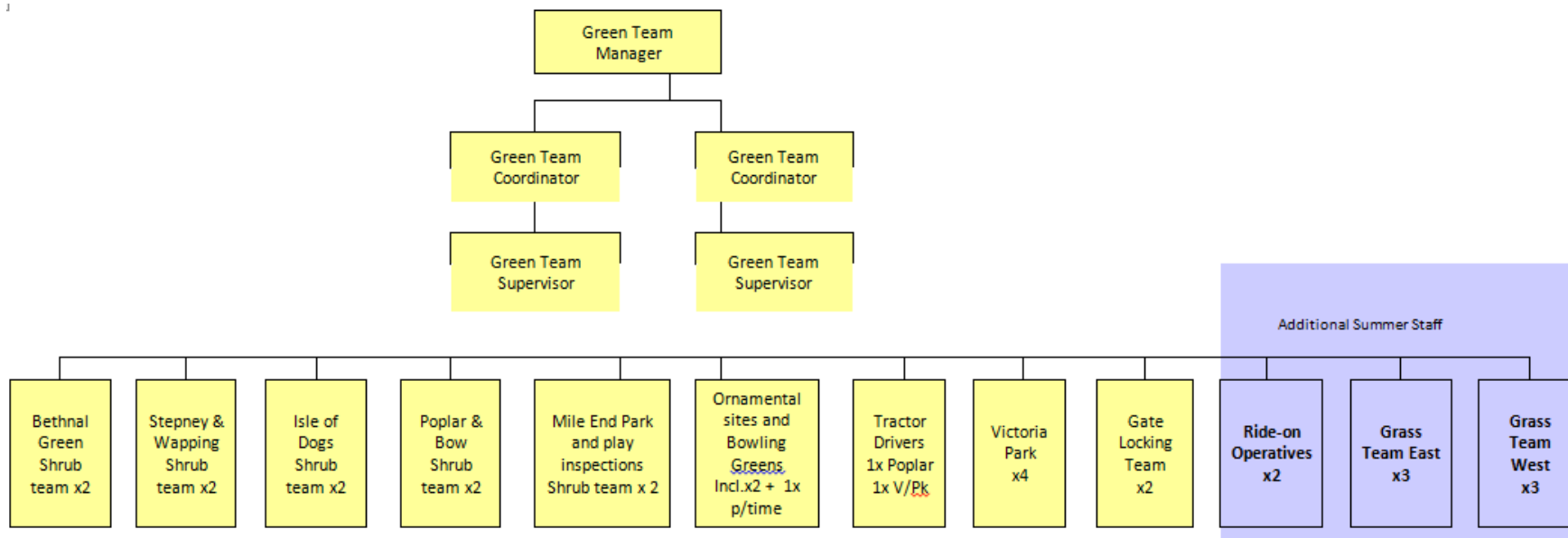


2.8 Organogram of Mile End Park Structure



The Head of Service reports to the Fields in Trust Charity board which comprises of the entire cabinet of Tower Hamlets and chaired by the Executive Mayor. The Head of Service also reports to the Mile End Park Partnership board. This was formed to oversee the construction phases of the park and continues to cover the outstanding items. The board consists of two senior councillors from the London Borough of Tower Hamlets, the East London Business Alliance, and trustees of what was the Environment Trust and are joined by the Friends of the park in the capacity of observer who enjoy speaking rights but do not have voting status.

2.9 Organogram of Green Team



This has been subject to competitive tendering since the 1988 Local Government Act with contracted service providers delivering both horticultural maintenance and cleansing services. The Council has recently reviewed this arrangement and since 2013 the horticultural maintenance has been directly undertaken by the in-house team 'LBTH Green Team'. Cleansing operations will be undertaken by the Councils Cleansing contractor Veolia. This arrangement has been developed to ensure that high quality, efficient and effective services are delivered.

Council monitoring officers check standards of work such as grass cutting, weeding, pruning and litter picking, and any failure is brought to the attention of the relevant service provider to remedy. The monitoring officers also certify due payment to the contracted service provider and issue variation orders for additional work. All cleansing functions are monitored in line with NI 195 standards and horticultural activities on an A-C scale.

3 Fact Sheet

Physical & Geographical Details

The Park is situated within the Mile End and Bow area and is best described to be as a vertical column down the centre of Tower Hamlets.

Area of Site

The total area of Mile End Park is some 32 hectares (79 acres).

Land Tenure

There is dual ownership of the park, Fields in Trust and the London Borough of Tower Hamlets. The Council owns Brickfield Gardens, Agnes Green, Kirks Place and the Locksley Street Children's Playground. All of these are located in the south of the Park. Fields in Trust own the rest.

Public Rights of Way

No public rights of way are known to exist across the site; all paths are permissive.

Grid Reference

The Ordnance Survey Grid Reference for Mile End Park:

TQ 362827

X: 536201

Y: 182701

Latitude: 51.526808

Longitude: 0.038022995

Due to the size of the Park, the grid reference of the Art Park has been used.

Planning Authority

The London Borough of Tower Hamlets is the Local Planning Authority.

Electoral Information

Mile End Park is located in the Bow West and Mile End wards.

Transport Links

Bus: There are numerous buses which pass through the Mile End Road junction which are close to the Park. These are 25, 277, D6, D7, 205, 323, 339, 425 and N25.

Tube: The nearest station is Mile End. This station is in Zone 2 and is on the Hammersmith and City Line, the District Line and the Central Line.

Access

Except for the Children's Play Park in Locksley Street (locked every day at dusk), the Park is open throughout the year. The layout of the park does not make it suitable for closure, and the Park's 24-hour access is useful for local users who access many of the Park's amenities through day and night.

The Park has numerous entrances. Vehicle access is for Council services and contractors; all other vehicles are prohibited from entering without prior consent from the Council, unless for emergency access by police or ambulance.

Except for a handful of stairway entrances via Regent's Canal, all entrances are accessible to people with limited mobility. Despite its' gradients it is accessible for people with buggies or wheelchairs as well as others with limited mobility. The entrances are well lit, spacious, and some are covered by CCTV.

Amenities

- Three pavilions (Arts, Ecology and Play), two with ponds
- Picnic areas at Kirk's Place, King George's Field, the Events Field and Wennington Green
- Playgrounds (at Brickfield Gardens, the Locksley Street Children's area and the Adventure Park)
- Conservation areas at Kirk's Place and the Arts pavilion
- Sports facilities: climbing wall at the Ecology park, full size astro turf football pitch at King George's Field, 5 a side football pitches, Mile End Stadium and Leisure Centre, BMX track, Multi Use Games Area at the Adventure Park
- Dog Gym at the Adventure Park
- Outdoor gym at Wennington Green
- Retail units under the Green Bridge and adjacent to the Adventure Park
- Across the Park – cycle and walking path, 3 woodland walks, central reservation planting and canal bridges at Meath and Solebay



Map of Tower Hamlets illustrating location of Mile End Park (North and South)

4 History and Context

4.1 Summary

The Park was constructed from several pieces of land and was originally designed to become an almost continuous green strip less than half a mile from Victoria Park in the north and reaching to within 0.75 mile of Limehouse Basin in the south. Although the Park doesn't quite reach Limehouse Basin and there remain three roads that divide it, the presence of the towpath along the Regent's Canal allows for an unbroken walk through the park.

4.2 Stretching back in time

The site has a rich history, dating as far back as the Peasants' Revolt, as Mile End Green was the place that Watt Tyler, Leader of the Peasant Army met King Richard II and his assembled army in 1381.

In 1820-1838 it was the site of a famous pleasure garden or tea garden, known as the New Globe Inn Gardens. These pleasure gardens were slightly less fashionable than Vauxhall and Raneleigh Gardens, but at sixpence entry fee, still considered itself genteel. The New Globe Inn can still be seen today with its characteristic globe on the roof to the northwest of the Green Bridge.

In 1936, following the death of King George V, a charity was formed to improve playing fields and recreation grounds across the country in commemoration of the late King. Mile End Park received the single largest grant of any park in the country and the commemorative plaques can be seen embedded in the gate piers adjacent to Copperfield Road.

In 1944 Lord Abercrombie developed the most ambitious plan for the establishment of parks in London. Amongst the proposals was the establishment of parkland linking Victoria Park to Limehouse Basin which would effectively elongate Mile End Park, however it would be more than 50 years before Lord Abercrombie's vision would be put into effect.

The first V2 bomb dropped on the railway bridge adjacent to Mile End Park in 1944 and the blitz continued to devastate the East End. Such devastation made possible the potential implementation of the Abercrombie Plan and in 1950 Mile End Park was created out of the devastation of the Second World War and marked the beginning of compulsory purchasing of houses and factories to allow for future park expansion.

In the 1980s the GLC (Greater London Council), who managed the original park, resurrected the plans first formulated by Patrick Abercrombie MP and drew up extensive plans. The GLC was abolished by central Government before the plans could be fully implemented. It was not until 1994 when the newly established Millennium Commission sought suitable projects to mark the new millennium that the opportunity arose for the expanded Mile End Park to become a reality. The London Borough of Tower Hamlets joined forces with the Environment Trust and the East London Business Alliance to form the Mile End Park Partnership.

4.3 A park for people

The concept of a park for the 21st century sprang from the local community following a "planning for real" weekend where local people were invited to meet and discuss what they would like to see in the park. In September 1995, 300 people attended the Mile End Park planning weekend in a local school. Participants were given blank copies of the park out line and the Borough's strategic plan and asked to write down what they would like to see in their park and to list their priorities for the site.

It was this public consultation that set the framework for the creation of Mile End Park as we would recognise it today. Once the results of the September consultation event had been assessed, landscape designers were brought in to make the Park a reality.

4.4 Constructing the dream

In January 1998, building work began on the new Mile End Park, and by September the first major construction started with work on the Terrace Garden and the centrepiece of the scheme, “the Green Bridge” that would span the busy Mile End Road.

Work on the Green Bridge was completed by July 1999, followed in October by the start of phase two: the construction of the Art Park and the Ecology Park.

Late 2001 saw the construction of phase three, the Children’s Park and the Children’s Pavilion. The Children’s Park became fully operational in 2003.

A new bridge was opened on October 20th, 2009, effectively joining a piece of land on the other side of the canal to Mile End Park and encouraging wider use of the park to a greater number of people. This was the final piece of outstanding work that was promised to the Millennium Commission.

The Park’s urban adventure amenities expanded further with the official opening of the Skate Park in the summer of 2011. The Skate Park is managed by the Council’s Sports Services, who also manage the BMX track adjacent to their office.

Like anything organic, the Park continues to develop, but it has at its core the dreams and aspirations of the people drawn from the local community who made their views known at that first consultation meeting. Although the realities of development resulted in some changes to the scheme as it evolved, virtually all elements of the scheme as originally envisioned have been successfully implemented except for the proposed completion of the solar canopy above the go kart track.

5 Site Overview

5.1 The Park deconstructed

The Park can be divided into segments and whilst these have their own individual characteristics, they blend to make the whole Park. The Park is bisected by two busy roads and two railway lines, and the design of the park has intentionally incorporated this to make a truly urban park of the 21st century.

The Park has several main sections (running north to south): Wennington Green, the Ecology Park, the Art Park, the Green Bridge and Terrace Garden, the Adventure Park, the Sports Park, and the Children's Park. In addition to these there are some less distinctly defined areas of the park that act as transitions for the park visitor.

5.2 Amenities

All sections of the park are very well utilised and serve well for recreational, community, adventure, ecology, play, heritage, and conservation which helps attract and retain users. Below is a summary of the Park's amenities.

5.2.1 Amenities south to north (to Green Bridge)

<i>Brickfield Gardens</i>	<i>Agnes Green</i>	<i>Locksley Street Playground</i>	<i>Kirks Place</i>	<i>King George's Field</i>	<i>Adventure Park</i>	<i>South Park / Events Field</i>	<i>Green Bridge</i>
<i>Play area Picnic area</i>	<i>Picnic area</i>	<i>-Enclosed Playground -Growing Zone -Play Pavilion -Public Toilets -Wildlife pond</i>	<i>-Enclosed Conservation Area -Picnic Area</i>	<i>-Picnic Area -Meadow Area -11 aside Astro Turf</i>	<i>-Skate Park -Graffiti Arch -Revolution Karting -Unit Arches include service: Somali Integration Team, Skate Shop, Indoor Skate Area, Concordia Community Centre, Dog Warden -Five aside Football Pitches -Mile End Stadium -Mile End GLL Leisure Centre -Short Breaks Gym -Urban Adventure Base -BMX Track -Play equipment for elder children -Multi Use Games Area -Dog Gym Copperfield Woodland Walk</i>	<i>-Picnic / Recreation Area -Terrace Gardens -Cascade Fountain -meadow and conservation areas</i>	<i>Units include: -Restaurants -Baristas -Supermarket -Estate Agent -Car park (pay & display)</i>

5.2.2 Amenities Green Bridge to north of Park

Art Park	Ecology Park	Wennington Green	Overall Park
<ul style="list-style-type: none"> -Older People's Community Garden -Woodland Walk -Arts Mound -Arts Pavilion -Arts Lake -Dedicated Conservation Area -Bee Hive -Meadow areas 	<ul style="list-style-type: none"> -Haverfield Open Space -Haverfield Woodland Walk -Haverfield Road Public -Car Park -Climbing Wall -Meath Bridge -Ecology Park -Ecology Lakes x3 -Ecology Pavilion -Compost Bin Area -Meadow area 	<ul style="list-style-type: none"> -Adizone Outdoor Gym -Picnic / Recreation Area -Children's Playground 	<ul style="list-style-type: none"> -Dedicated cycle path throughout the Park -Walking path throughout the path -3 Woodland Walk -Central Reservation Planting -2 Canal Bridges: Meath Bridge and Solebay Bridge

5.3 Wennington Green Concept

This area is designed to allow outdoor entertainment to take place, particularly, though not exclusively, for children.



The Adizone in Wennington Green

Description

The arena comprises a large grass area with some mounding to form a partial amphitheatre. Within the mounding is an outdoor gym (the Adizone) which is brightly coloured and can easily be seen from the road. Fencing defines the area on three sides and the Regent's Canal marks the other boundary. Trees have been planted around the periphery, but the area is easily visible from the road.

A small playground exists across the road that divides the grass area from the Bow Wharf development. The play area is designed for the 1 to 8-year-old age group.

5.4 The Ecology Park

Concept

Offering the casual visitor an insight into ecology and biodiversity that may lead to seeking out further information on the subject elsewhere in the park. Although these themes are present throughout the park, it is intended for this area to be the core focus area and to build on levels of knowledge and involvement.

Description

The area has three ponds that have attracted damselflies and dragonflies, both new species to the park. The ponds are designed to give the impression of being linked to the canal, but they are in fact fed from a borehole. The area is visually dominated by a redundant wind

turbine that formerly powered the pump circulating water in the lakes and is an example of wind energy in action. The earth insulated Ecology Pavilion is used as a public building for exhibitions, conferences, seminars, and private hire, and acts as a valuable source of revenue.

Work continues here and elsewhere in the park to undertake some trapping of invertebrates to compare the findings with the previous year to monitor the success of the ecology strategy.



The Ecology Park

5.5 The Art Park

Concept

The Art Park is to provide a complementary backdrop for art in all its many forms both indoors and outside in the park. This ranges from temporary to permanent pieces of sculpture and includes a range of exhibitions held in the earth insulated Art Pavilion.

Description

A large pond with cascades, islands, bridges, and the Art Pavilion itself dominates the Arts Park. Further south is a partially planted small hill known as the Art Mound, affording views across the park. A set of giant grass steps provides an energetic method of reaching the top, but a path around the mound allows for a far gentler ascent. There are beds of imaginative planting that afford interest throughout the year to the front of the Pavilion. To the rear of the Art Pavilion, the globular line of willows has been removed and replaced with a series of new beds planted to provide year-round interest.



The Art Park

5.6 The Green Bridge and Terrace Garden

Concept

The Green Bridge is the iconic statement of the park, making it clear that traffic filled roads will have no dominion over a 21st century park. It unites the two halves of the park and allows one to walk through the Park oblivious to the four lanes of traffic below on the busy Mile End Road. The Bridge also unites the two communities of Bow and Poplar, no longer separated by the busy road.

The Terrace Garden is designed for year-round interest and was laid out with older people in mind. Each level can be reached by a sloped access and there are many seats offering rest and a place to watch the fountain play in the more formal water feature. The aesthetic interest of this area makes it a popular meeting place for both young and old alike, and in many ways, it is the centre piece of the park.



Bird eye view of the Cascade Garden

Description

The Green Bridge, designed by Piers Gough, spans the Mile End Road and can be easily identified from Mile End Tube station. The original planting scheme was for Silver Birch and Black Pines to be set in grass with a footpath and cycle path running through the centre. The trees are effectively planted in large containers that are plunged into the polystyrene that fill the bridge, and as such must be treated as containerised plants.



The Green Bridge

The Terrace Garden is a series of terraces leading down from the bridge on the southern side to the pool and fountain. Each terrace is planted to maintain year-round interest and is supplied with formal seats. The water feature has a fountain at one end and five burbling jets at the other. Water travels from one end to the other down a cascade, providing the sound of running water. The far side of the feature is less formal and reeds and other natural aquatics have been allowed to establish. In 2012, whips of *Alnus incana*, *Ulex europaeus* and *Betula* were planted thickly and are thinned as they grow, governed by the degree of rainfall and the depth of soil.



The Terrace Garden

In 2012, whips of *Alnus incana*, *Ulex europaeus* and *Betula* were planted thickly and are thinned as they grow, governed by the degree of rainfall and the depth of soil.

Fencing off the viewing platform has deterred antisocial behaviour, which was a problem with the original bridge design.

Natural play pieces have been installed on the approaches to the bridge. This is part of a strategy to promote play throughout the length of the park using pieces giving play cues to children, rather than formal play equipment.

The removal of the central reservation from the Bridge has enhanced the visual aspect of the Green Bridge and this will improve as the tree seedlings continue to grow.

5.7 Adventure Park

Concept

The area is designed to appeal to those between the age of 11 and 17. It takes as its starting point that it is impossible to provide a single piece of equipment that would be of interest to both ends of this age range, so one core item has been provided as a bigger and more challenging version of that in the Children's Play Park for the under 11s. From this the younger children can observe the etiquette of this play space and gain confidence before venturing onto the less familiar equipment. The other basis of the design is that most young people in this age group tend to want places that they can sit and chat, away from adults.



The Skate Park



The BMX track

Description

The Urban Adventure Base (UAB) building is a large two floored sea container that has been adapted to make office accommodation to house UAB staff and its users.

Adjacent to the UAB unit is the newly developed Short Breaks Gym, which provides various sports and health related exercise and training sessions specifically for young people with special educational needs and/or disabilities. Both areas are managed as part of the Council's Youth and Community Services.

The BMX track was constructed in 2012 to coincide with the first Olympic Games at which BMX was a recognised Olympic sport. The area is maintained by LBTH and the UAB runs activities for 13–19-year-olds.

5.8 The Sport Park

Concept

This is to provide a wide range of sporting activities within the park, building on the already successful athletic track and all-weather sports pitch. The activities are designed to be accessible to a wide cross section of the community and have the promotion of healthy lifestyles as a core objective.



GLL Sports Stadium and Leisure Centre

Description

The area contains two all-weather surface sports pitches, full-size athletics track and stadium with changing room complex. These facilities are widely used both by local athletes, local schools and the local community. The associated £15.3 million leisure centre opened in 2006, incorporating two swimming pools, two gyms, a steam room, fitness studios, sauna and physiotherapy and massage surgeries together with 10 outdoor football pitches and changing facilities.

5.9 The Children's Play Park

Concept

This facility provides a range of child-based activities for children aged between 1 and 11 years of age and offers support for the parents and carers of children in this age range.

Description

The outdoor area comprises of several pieces of fixed play equipment, a water jet feature, an area for imaginative play based around a make-believe dry riverbed, a small, ruined castle and a variety of interactive play equipment. In addition, there is an area for ball games and various ground games markings.

To the rear of the pavilion is the Growing Zone, an area used to offer children the experience of growing fruit and vegetables. Elsewhere is an area of grass, which is managed as wild meadow for younger children to gain a first understanding of nature.

Due to the lack of use of the small catering kiosk, a permanent solution for the use of this space is currently being explored.



A Day by the Seaside in Mile End Park

All Park and Play Rangers are trained to carry out daily visual inspections and all Officers are trained and qualified to carry out monthly operational play inspections throughout the park.

The Play Pavilion building is fully equipped with a soft play area, toilets, office, and storage space and provides a large indoor play space. The groups using the centre share a range of equipment, but they may also bring their own age or ability appropriate equipment to enhance their sessions.

There is also a fully operational kitchen which allows for both healthy eating activities and cooking sessions to take place so that children get the opportunity to understand how food is prepared. It is linked with the outdoor growing zone.

5.10 Interlinking Elements

Within Mile End Park there are several spaces that connect the segmented areas, and whilst not necessarily featuring so prominently on plans or in accompanying text, they are no less clearly defined and make a significant contribution to the overall success of the park. Sometimes these are fully developed and with a clear purpose and at other times they are flexible spaces without any defined role. This section includes brief descriptions of these links and minor features.

“Fishy places” is a piece of artwork designed by local children to interact with the local anglers that fish the canal. It is situated within the park at the point that the canal flows under Roman Road at the entrance to the Ecology Park.

The Meath Bridge dominates the area in front of the Climbing Wall. The bridge crosses the canal connecting the Park to Meath Gardens. This was a requirement of the Millennium Commission and was a part of the original scheme. The bridge opened on October 20th, 2009 and has proved very popular with people on the Meath Gardens side of the canal and continues to bring new audiences into the Park.

The Climbing Wall is commercially let and managed and is situated adjacent to the canal and in the area that separates the Ecology Park from the Art Park. Behind the Climbing Wall premises, and bound on its western border by Grove Road, is an area of open grass. This space, known locally as **Haverfield Green**, is used for informal games of football and as a space that can be used for larger Park Events for example, 'Park Life' that is organised by the Friends of Mile End Park.

Woodland walk areas have been introduced to three areas of scrub on the periphery of the park. The first woodland walk is sited just off Copperfield Road, adjacent to the dog exercise areas. This area provides a junction of natural walks providing access to different directions within the south of the park. The second is along Chris's Wood and the third is the largest, known as the Haverfield Woodland Walk. These areas provide play space taking over a natural area of scrub and insert a series natural play features making them very popular amongst children and schools.

Clinton Road Growing site is sited at the southern end of Clinton Road and was a remnant of an older park design. It was an area of traditional shrubs and grass fenced off from public access and so served no purpose to the park and was used to create a garden for older visitors. It currently provides a space for community gardening led by a local community group.

Shops and restaurants are built into underside of the Green Bridge, and the rent derived from these units is part of the revenue stream for the park. The units were initially leased as empty shells, and in return for six months free rental, the tenants were expected to fit out the units using high quality design and materials.

The South Park links the Terrace Garden area to the Adventure Park and is an area of short grass and trees. Like the area behind the Climbing Wall, open areas of grass are useful to balance the more developed areas. However, there are some important areas of scrub, and these are managed in the interests of biodiversity to form mixed woodland areas.

The borehole, by its nature, cannot be seen, but its effect on the park cannot be underestimated. The Park has a licence to remove water directly from the water table beneath the park. Water from the borehole is pumped into the lake and also feeds the automatic irrigation system to water the trees on the Green Bridge and along the spinal path.

At the north end of Copperfield Road on a space that had no obvious purpose, even for informal recreation, a **Dog Gym** / Dog Agility course has been introduced.

The Railway Arches are situated beneath a busy mainline railway and act as a visual as well as physical barrier. They had acted as a blot on the park landscape as they were filled with examples of "dirty industry", for example garages and breakers yards. A policy decision was taken by the London Borough of Tower Hamlets to lease the arches on a 99-year lease from Rail Track and to re-let them to selected sub-tenants. This has had the effect of cleaning up an untidy area and the tenants include the Animal Wardens' operational headquarters with an animal operating theatre and holding pens as well as Venture, "Concordia" boasting a recording studio and mixing suite and is used by young people from the Somalian, Bangladeshi and English communities. In addition, English as a Second Language and IT skills are taught in classrooms within the centre.

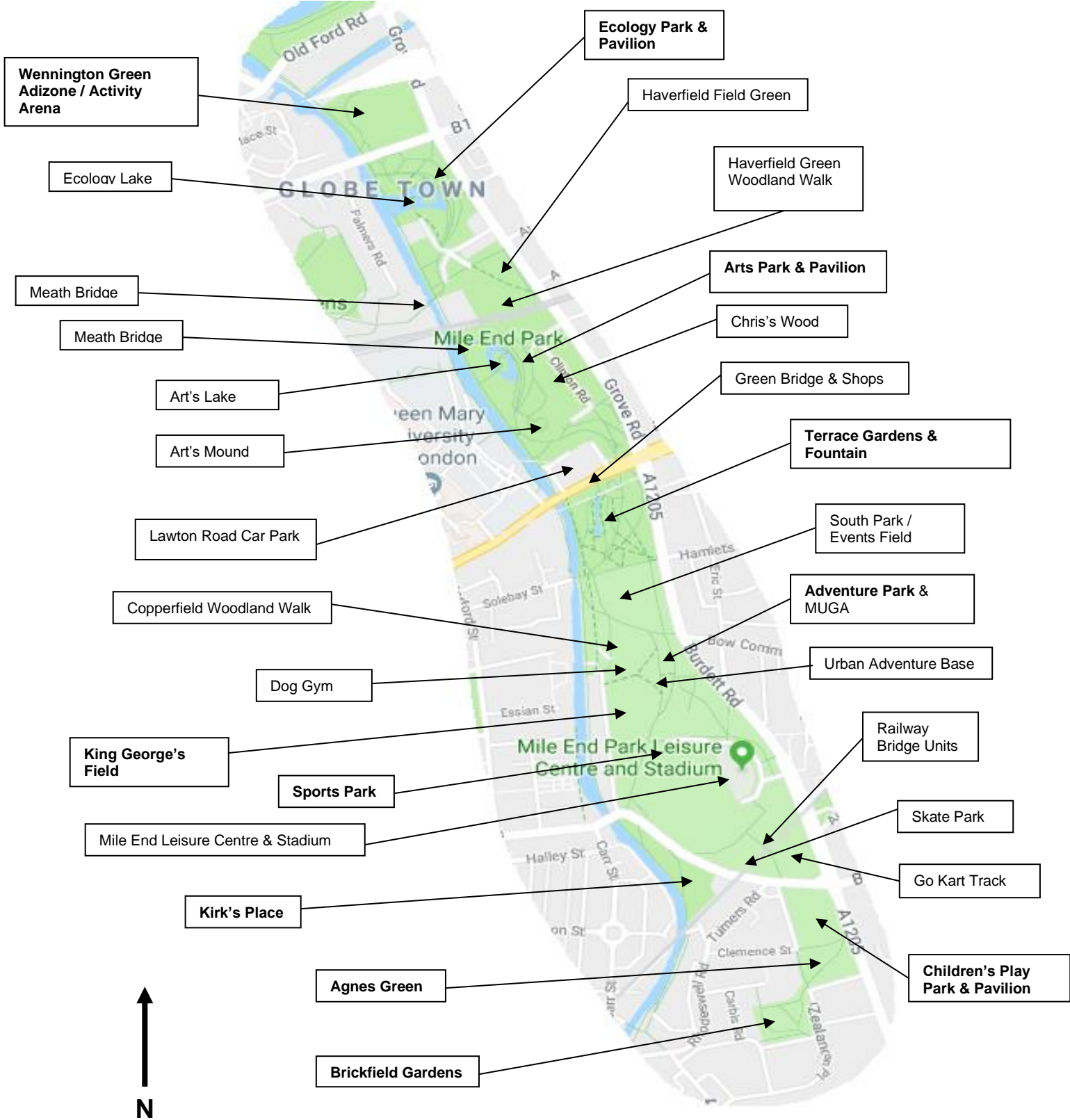
One arch has walls housing official **graffiti boards**, where local artists can create graffiti art and which fellow artists wipe out in time to allow new art to be displayed. This central archway leads through to the go-karts and Skateboard Park, the latter offering more graffiti boards. The central arch remains as a linking space between the 5-a-side football facilities and the path leading to the children's Play Park. The two remaining arches are used to house a half pipe to allow skateboarding in wet weather and a skateboard outlet which offers supervision of the site and youth meeting area/cafe.

The **Skate Park** has a polished concrete floor and is designed to provide an experience for all abilities from the absolute beginner to the advanced practitioner of the sport. It attracts a wide variety of age groups and although the predominant use is skateboarding it is also used for BMX and in line skating. Revolution Go-Karting is another tenant of the park and rental from the track is another important source of revenue to the park.

Kirk's Place is a piece of grass flanking the Regent's Canal and visually does not connect with the park. Linking the Sport Park via the brick gate pierced entrance/exit, (which still includes the plaque commemorating King George V Playing Fields) and crossing the busy Rhodeswell Road accesses the site. A listed vented brick sewer chimney dominates the area, belonging to Thames Water, whilst the Canal and River Trust is responsible for the canal and towpath. Kirk's Place is also thought to provide a habitat to the rare Bombardier beetle, only the second such habitat in the country.

The Spinal Path is the main path that travels north/ south through the centre of the park. It is divided into two sections to separate cyclists and pedestrians and is constructed of two surfacing materials a tarmac and a hot tar resin bound surface. A narrow linear shrub border containing mixed shrub and tree planting that is protected by temporary fencing separates the two paths. The cycle path has periodically placed rumble strips to slow down cyclists as they traverse the Park to protect the health and safety of all park users. An application for funding in the region of £60,000 was successful in 2013 to remove the topsoil and replant the area. The planting was completed in autumn of 2014 and additional planting is being added during the spring/summer 2017 with the anticipation that the fencing will be removed once the planting has established.

5.11 Amenities in the Park



6 A Welcoming Place

A welcoming place is somewhere that all the community feels able to access and enjoy the amenities and facilities.

6.1 Objectives

To be welcoming the following objectives have been developed for the park:

- ***It will be managed to ensure a healthy, safe and secure place for all members of the community.***
- ***An inter-departmental approach to proactively reduce anti-social behaviour.***

6.2 Accessibility

The Park is open all day, seven days a week, 365 days a year. Tower Hamlets keeps all gates open to ensure the Park remains inviting. Sightlines are maintained by the grounds maintenance teams and surrounding meadows are kept low or back from paths to improve views to ensure that all areas of the park are visible. This assists in not only the reduction of ASB but also enhances the feeling of a secure environment. Vehicle access is restricted to service providers and grounds maintenance teams.

Facilities such as playgrounds, wildlife areas, picnic areas and churches are close to main gates and paths, allowing quick safe access.

6.3 A visible presence

The Park has the benefit of regular visits and inspections by a range of Council officers and service providers. Both the grounds maintenance team and cleansing service provider regular visits to the park along with officers from both the Clean and Green and the Arts Parks and Events section. This is in addition to regular patrols from both local Safer Neighbourhood Teams and Tower Hamlets Enforcement Officers. All the Community Park and Play Rangers are uniformed and easily identifiable which creates a feeling of security within the Park.

6.4 Signage

Interpretation, historical, educational and navigation signage are installed throughout the stretch of the park. There is wildlife, heritage, orientation, and X signs across the park.

7 A Healthy, Safe and Secure Place

A healthy, safe, and secure place is one that promotes healthy living and exercise. It is a place where everyone may feel safe and secure.

7.1 Objectives

To be a healthy, safe, and secure place, the following are applied at Mile End Park:

- ***It will be managed to ensure the personal safety and wellbeing of all park users is given the highest priority.***
- ***It will be promoted as a place for physical activity, including play, sports, and exercise, as well as for promoting mental wellbeing and social confidence.***
- ***Ensure play areas are inspected daily, monthly, and annually by Community Park and Play Rangers, Parks Officers and externally by qualified RPII inspectors.***

The Borough is committed to promoting the health, safety, and welfare of all employees and of the public who meet its premises and services. It is the policy of the Directorate to develop a positive health and safety culture throughout the organisation based on the belief that good safety is good business.

7.2 Play Equipment

Since November 2016 the Mile End Park Rangers and Play Workers jointly with the Victoria Park Team have adopted a new way of monitoring play equipment using technology. Through a series of phases, the Park has implemented the use of a play app using Samsung tablets. Although this method is still in its progressive stages, it has proven to be more reliable, effective, and accurate than previous paper recording systems.

In addition to the daily visuals, monthly operational inspections are carried out within the park by qualified officers, together with annual independent assessment carried out by ROPSA (Royal Society for the Prevention of Accidents).

Risk Assessments for the Park, children's play area and any events in parks are reviewed annually. These are checked by the Parks Management who also take responsibility for ensuring that any resulting actions are monitored and carried out to the required timescales. The service has trained operational play inspectors and all training for Play Workers and Community Park Rangers is refreshed on an annual basis.

7.3 Security

The service is currently undergoing a mini restructure, and an integral change from this is the amalgamation of the Play and Rangers teams based in the Mile End Park and to jointly monitor the Park and deliver activities and events. Both teams are responsible for the safety and enjoyment of the park users and will encourage the Park bylaws to be upheld. All Play and Ranger staff wear high visible uniforms allowing easy identification from a distance. Park personnel are the point at which members of the public can voice their concerns, get information about what is happening in the park or can give general feedback whilst carrying out their general day to day duties.

Graffiti removal occurs each morning, so that the perpetrators of the graffiti get bored, as their work cannot last for more than a few hours and always less than 24 hours. This has proved very successful in deterring graffiti although it has attracted major attacks from gangs outside the area who presumably see it as a challenge.

All team members undergo DBS checks.

In their role as the visible presence of the park the teams organise, publicise and lead a range of guided walks as part of an annual programme of events that will encourage more and wider use of the park as well as ensure that Park byelaws are enforced.

7.4 Tower Hamlets Police and Community Safety

The policing of the park comes under the authority of the Tower Hamlets Metropolitan Police Service. As well as officers attending parks in response to emergencies or special operations, a local policing initiative is in place within London to increase safety and perceptions of the public realm, including parks, known as 'Safer Neighbourhoods', based around electoral wards with officers having local knowledge.

Working alongside the Police is the Safer Community service, a division of the Council tasked with delivering the Tower Hamlets Safer Communities Strategy to reduce crime, improve quality of life and help to make the borough a safer place. The Safer Neighbourhoods Team, the Council's Parks Team and Safer Communities share intelligence and information not just on antisocial issues but also on more positive ones and support each other to help 'design out crime' or respond quickly to vandalism or damage. There is also a dedicated Tower Hamlets Enforcement Team who patrol parks in the borough on a programmed basis.

CCTV cameras are in operation through the centre of the park and also in the Children's Play Park. The cameras are monitored from a control room that is linked to the local police station. Cameras are also in operation on the outside of the park at either side of the Green Bridge.

Lighting in the form of lampposts is located along the spinal path, the towpath, and at crossover points on major routes. These are particularly important as the park boasts unfettered access around the clock seven days a week throughout the year. The lighting in the park has been enhanced with the addition of new lights and the replacement of some lights with stronger outputs.

Police liaison occurs between the Parks Officers and the local Police. Officers on police horses continue to be regularly seen patrolling the Park.

7.5 Tower Hamlets Parks & Open Spaces Byelaws

The Park is covered by a set of 'local laws' specific to Tower Hamlets Council's parks and open spaces, which are known as the 'Tower Hamlets Parks and Open Spaces Byelaws'. Byelaws are designed to encourage, regulate, and manage the proper use of all parks and open spaces. The Park is also covered by other laws not mentioned in the byelaws. This includes drinking alcohol, dog control and graffiti; there are other powers available to the Council and Police to act or deal with offences, including being drunk, disorderly or aggressive. The Byelaws can be enforced by any officer of the Council, including the Tower Hamlets Enforcement Officers, and the Police. The first objective is to inform and educate, so that an offence is not committed or not repeated.

The new Byelaws came into force in 2013 and replace an older set of byelaws which dated back to 1932. The new byelaws reflect the different ways open spaces are now used and are easier for people to understand and the council to enforce. The byelaws cover aspects such as open fires, cycling, and the protection of wildlife.

http://www.towerhamlets.gov.uk/lgnl/leisure_and_culture/parks_and_open_spaces/parks_and_open_spaces.aspx

7.6 Dog Control

The Parks Byelaws do not mention dogs as they are supplemental to existing law.

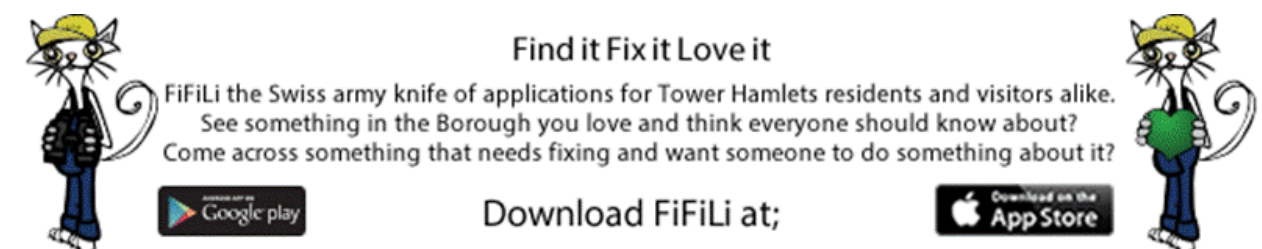
Under the Dogs (Fouling of Land) Act 1996 LBTH Animal Wardens, Tower Hamlets Enforcement Officers and the Police have powers to fine any persons allowing a dog under their control to foul and not dispose of the waste within any of the Borough's public open spaces.

The Clean Neighbourhoods and Environment Act 2005 replaces powers made under the Dogs (Fouling of Land) Act and allow councils to introduce dog control Orders. Whilst covering fouling by dogs these orders can also cover dog-related offences such as not exercising dogs within play areas and ornamental gardens, keeping dogs on leads within recognised locations and setting a limit on the number of dogs any person is permitted to exercise within any given park or open space.

7.7 Risk Reduction and Management

Tower Hamlets Parks Team, Green Team staff and users of the park play a key role in the management and reduction of risk. Prior to the commencement of all maintenance activities the Parks team carry out site specific risk assessments and undertake visual playground inspections. All maintenance staff are equipped with a smartphone device making real time reporting of hazards faster and more effective. The Ranger Service play a key role in monitoring and recording inspection data to ensure risks to both staff and members of the public is reduced. In addition to this, the signage has been equipped with QR readers which allow residents and visitors to report hazards or any other issues directly to the maintenance teams using a smartphone device.

Tower Hamlets Council has an application 'Find it Fix it Love it' (FiFiLi) which allows residents to report any issue within the borough or promote something they like. A photograph can be taken and sent directly to the correct department which enables faster and more effective response times.



Find it Fix it Love it

FiFiLi the Swiss army knife of applications for Tower Hamlets residents and visitors alike.
See something in the Borough you love and think everyone should know about?
Come across something that needs fixing and want someone to do something about it?

Download FiFiLi at;

Download on the App Store

8 Well Maintained and Clean

A well maintained and clean place is one where the highest standards of both horticultural and general maintenance are implemented.

8.1 Objectives

To be a well maintained and clean public space, the following objectives have been developed for Mile End Park:

- ***Ensure all infrastructure buildings are maintained to the highest standard.***
- ***Address all litter issues, including graffiti and fly-tipping in the most effective, quick and responsive way.***
- ***Ensure grounds maintenance is managed in the most effective way.***
- ***Ensure all recreation and play areas are inspected and cleansed daily.***

8.2 Grounds Maintenance

This had previously been subject to competitive tendering since the 1988 Local Government Act with contracted service providers delivering both horticultural maintenance and cleansing services. Since 2013 horticultural maintenance has been directly undertaken by an in-house 'Green Team' run by the Council's Public Realm Department. Cleansing operations are undertaken by the Council's Cleansing contractor, Veolia. This arrangement has been developed to ensure that high quality, efficient and effective services are delivered.

Monitoring of the standards are conducted bi-weekly by the Parks Officers and the Green Team, standards include grass cutting, weeding, pruning and litter picking, and any failure is brought to the attention of the relevant service provider to remedy. The monitoring officers also certify due payment to the contracted service provider and issue variation orders for additional work. All cleansing functions are monitored in line with NI 195 standards and horticultural activities on an A-C scale.

8.3 Litter clearance

The Borough's parks are all designated at Grade A under the Environmental Protection Act 1990. This means that the contractor must maintain a 24-hour response time to remove problems such as fly tipping. In addition, Green Team officers undertake regular checks, and any failure is brought to the attention of the relevant service provider to remedy. The Borough's parks generally score above the designated grade, indeed within the acceptable limit for Grade B sites. The definition of Grade B is "predominantly free of litter or refuse except for small items". The Borough's parks cleansing contractor, Veolia Environmental Services Ltd. picks litter from the grass and shrub beds and empties the litterbins on a daily basis and sweeps the paths. The collection of leaves in the autumn has been retained as an in-house activity to support the development of on-site composting opportunities.

The Borough's grass sports pitches and Green Flag sites (grass and paved areas) are cleaned of dog faeces once a week, with dog bins emptied daily.

8.4 Repairs and graffiti removal

Reactive maintenance works are carried out as and when necessary (making use of measured term contracts where feasible) to make good any health and safety problems on the site. Priority 1 repairs (urgent hazards) are carried out within 24 hours, down to Priority 3 repairs which can take up to one month. Offensive graffiti are treated as Priority 1 repairs and are removed directly by the Veolia staff (Graffiti Team) if possible or reported for urgent removal by contractors. Any reactive maintenance is reported to a range of specialist contractors who respond according to agreed response times. These are, depending on critical impact on the safe and effective working of the park and the protection of the staff and

public, immediately, same working day, within 24 hours, within 48 hours or as planned work for longer time periods.

Any building and structural defects found by any member of the public can also be reported through its Customer Call Centre on 020 7364 5000, or by email to parks@towerhamlets.gov.uk.

8.5 Park furniture

Seating is maintained and kept in good repair and an annual visual check is carried out each January so that all repairs can be completed by Easter. More seats of the tubular steel design will be added where seating is sparse. As the design costs £1,000.00 per seat, it is only possible to add one or two seats a year unless a previously unidentified source of funding becomes available.

Examples of earlier styles of seating that do not conform to the corporate image of the park have now been removed. The two types of seats provided are stainless steel tubular for paths and chunky wooden for setting in grass.

The Park has also benefitted from the installation of natural seating. This has proven successful in terms of its usage, cost-effectiveness, maintenance, and sustainability.

General day to day repairs is dealt with in one of three ways:

- 1) *Small repairs e.g., blocked sinks/ urinals, loose nuts, screws etc. are dealt with by the Rangers.*
- 2) *Routine repairs that fall outside the scope of the Rangers are passed on by the Rangers directly to local contractors who carry out most of the Council's repair e.g., water leaks or fence repairs.*
- 3) *Finally, major repairs e.g., boiler replacement is passed to the Council's Buildings and Construction team to be managed by their clerk of works.*

Play equipment is repaired by the manufacturer/supplier other than routine replacements e.g., swing chains, which are carried out by the Rangers.

8.6 Cleanliness

Tower Hamlets Council places significant emphasis on maintaining a high level of cleanliness at the park including keeping the site free of litter, fly tipping and dog waste. Normally all enquiries and complaints about cleanliness or nuisance at open spaces are made via the details provided in 8.4.

8.7 Park lighting and CCTV

The Borough's Street Environment Department and the Safer Communities Services manage the lighting and CCTV across several park sites. The lighting and CCTV have helped to reduce crime and fear of crime within the park. The local police have indicated that the level of incidents within the park has diminished.

The Borough's Street Environment Department manages the budgets for all park lighting since they take care of all public lighting for the authority.

8.8 Financial Allocation

The Park has been designed specifically to reduce the amount of maintenance necessary in a bid to be a sustainable Park. The various sources of revenue described previously are used to ensure the ongoing sustainability of the various projects within the park. The annual grounds maintenance budget is £180,000, which is mostly expended via services provided by the in-house Green Team.

9 A Sustainable Park

A sustainable park is one where all attention is given to green principles, using recycled materials, ensuring that biodiversity is enhanced and protected.

9.1 Objectives

To be a sustainable place, the following objectives have been developed for Mile End Park:

- ***To improve the environmental sustainability within all Parks and Opens Spaces.***
- ***Increase the use of sustainable materials within the park.***
- ***To extend the service's corporate volunteer programme for the site to help maintain horticultural standards.***

9.2 Quality Audit – Green Flag Awards

The Park is regularly monitored by the Council Officers from the Green Team, the Parks Team, and other Council teams such as the Tower Hamlets Enforcement Officers.

Under the latest service re-structure, the Parks service was amalgamated with the Arts and Events Service to become the Council's Arts, Parks and Events Service. Under this new restructure officers from the Arts and Events Team monitor and inspect the Park during events and also while hosting activities.

The overall quality of the park is monitored through the annual Green Flag Awards scheme. The Green Flag Awards scheme is a national standard for parks and green spaces and provides a benchmark against which excellence and provision of high-quality landscapes are measured. The annual awards play an important role in ensuring the continuing quality of the parks, provision for community and visitors, developing the environment standards.

The process for Green Flag Judging involves an in-depth review of Park Management Plans prior to a site visit. Each visit is written up into a summary and includes an overall score for the park out of a total 100. General comments relating to each assessment criteria are included highlighting any issues as well as acknowledging where positive management action, projects or initiatives have occurred.

Parks are assessed against the criteria described in section 1 and which form the basis of the majority of this Management Plan:

- ***A Welcoming Place***
- ***Health, Safety and Security***
- ***Maintenance of Equipment, Buildings and Landscape***
- ***Litter Cleanliness and Vandalism***
- ***Environmental Sustainability***
- ***Conservation Heritage and Nature***
- ***Community Involvement***
- ***Marketing***

In 2021, twelve parks in the Borough successfully reached Green Flag Standard, and in addition, a further three contracted parks under service level agreement achieved this status also. Mile End Park has continued to retain this status annually since 2004.

9.3 Carbon Management Plan

Government estimates from 2006 indicated that some 2,348,000 tonnes of CO₂ were emitted in Tower Hamlets - just over 11 tonnes per head - the second highest emitting borough in London. Most of this (65%) comes from the commercial and industrial sector, with 18% from housing and 17% from transport. Targets have been set to reduce these CO₂ emissions. To achieve these targets all sectors of the community have a part to play by reducing consumption of gas, electricity, petrol, and diesel.

The Council began working with the Carbon Trust in June 2008 in Phase 6 of the Local Authority Carbon Management (LACM) Programme. The primary focus of the work is to reduce emissions under the control of the local authority such as buildings, vehicle fleets, street lighting and landfill sites, but considers the work of our third sector partners and contractors, such as Veolia. One of the outputs of the Programme was the production of a Carbon Management Plan. This was adopted by Cabinet on 8th April 2009. Parks and Open Spaces have actively fed into this plan and have identified savings to be made from improvements to park buildings reductions in contractor's mileage and investment in new, more efficient vehicles and plant.

The Carbon Management Plan commits the Council to a 60% reduction in CO₂ emissions by 2020 (on 2007 levels). The Carbon Management Plan can be found here:

https://www.towerhamlets.gov.uk/lgnl/environment_and_waste/sustainability/carbon_reduction.aspx

9.4 Grass maintenance

In its original condition the Park was mostly comprised of short mown grass that was incredibly species poor, a condition that was also reflected in the number of species of wildlife that could be seen. Areas not covered in short grass were mostly covered in tarmac or used for fly tipping. In 2004, monitoring of some invertebrates took place in the park to provide a baseline against which to measure progress of the ecological policy.

The grass along the main road is mostly kept short whilst large areas of the interior and all slopes are managed as meadowland. A one-metre strip of short mown grass flanks all the paths in the park and a two-metre strip of unmown grass surrounds all areas of copse and scrub to form a buffer zone and to increase species biodiversity. This course of action prevents indiscriminate pedestrian trampling but does allow areas for picnicking, sunbathing etc.

The replacement of the strict mowing regime with a meadow management plan has not only given a huge boost in terms of biodiversity, but also slightly reduces the annual cost of mowing.

All wood felled on the site is either left in situ to decompose or is taken to the long grass areas where the benefit to wildlife derived from the decomposing wood is greatest. Wood felled at other sites is also welcomed in the park as are bark chippings which are used for footpaths and to create a forest floor habitat amongst groups of trees. The only exception to this policy is if the trees are diseased and the arborist recommends removal and burning.

9.5 Planting

50,000 bulbs were planted each year for a period of 10 years starting in 2005, and this commitment continued between 2015-20. Volunteers from Canary Wharf and the city planted almost 500,000 bulbs and it is estimated that between 2005 and 2020 in total we have planted over 1,000,000 bulbs in the park. Bulbs have been introduced each autumn in large drifts to bring a more horticultural flavour to the park. A continual band of snowdrops along front edge of the park has been extended each year and now heralds the spring to the casual passer-by along the complete length of the park. At the Silver Birch Grove a large drift of Chionodoxa,

Scilla, Anemone, and Bluebell was planted by volunteers and these continue to be added to provide a carpet beneath the trees from February to May.

9.6 Tree Strategy

The trees are mainly relatively young and there are few that can truly be called mature. Due to the thin topsoil and the planting of larger specimens, establishment has become an issue. However, the Park seems to have been over planted, so currently trees that do not survive are not automatically replaced.

The larger trees, mostly London Plane, are pruned on a four-year rotation to prevent encroachment onto the road which is used by double decker buses.

Many of the trees are planted on thin soils or, in the case of the Green Bridge, in large containers. For this reason, it is important for all the trees to be routinely checked for drought intolerance and to irrigate as necessary. In 2012 a programme was implemented in having very small whips on the Bridge with water availability to determine the root growth, and so the eventual height of the trees, and to plant with drought tolerant species, including gorse.

An annual inspection of the trees informs a programme of restorative/remedial pruning, and to prevent an aging tree stock, some whips are planted each year at various points throughout the park.

Shrubs are planted throughout the park and are pruned to retain their natural habit, flowering and fruiting characteristics. Borders are lightly forked annually, and compost added where available. Borders are kept in a weed free condition. Where overcrowding occurs, shrubs are removed as part of the winter work programme.

Our trees are surveyed on a regular basis and the information recorded digitally on the Borough's geographic information system, using "Ezytreev" software. 24,559 trees (including small ones and some large shrubs such as holly and yew specimens) were for this site in 2010 (this is not inclusive of approximately 30,000 whips planted on top of the Green Bridge and also the new orchard whips in the playground). The system holds detailed information on individual trees, their condition, and maintenance history. The survey information is regularly updated. Surveyors undertake risk assessments and provide individual recommendations for any works needed and the frequency of re-inspection.

9.7 Green Procurement

Procurement is one of the 5 key areas being examined through the emerging Borough Environmental Strategy. In the interim, the purchase and use of materials and supplies from endangered resources, such as peat and peat-based composts, endangered hard wood and tropical species of timber, rocks from Pennine limestone pavements, bulbs and seeds taken from the wild, or products comprising such items are banned. All timbers are to be supplied from sustainable sources and are to accord with the Forest Stewardship Council's guidelines. The Parks and Open Spaces Service will abide by the Council's Environmental Strategy (see Appendix A.12) which was adopted in 2007.

Tower Hamlets was recognised as a Fairtrade borough by the Fairtrade Foundation (see www.fairtrade.org.uk) in 2006 and won a London-wide award* by achieving the following targets:

- *The Council must pass a resolution supporting Fairtrade, and serve Fairtrade coffee and tea at its meetings and in offices and canteens,*
- *A range of Fairtrade products must be readily available in the area's shops and served in local cafés and catering establishments,*

- *Fairtrade products must be used by several local workplaces (estate agents, hairdressers etc.) and community organisations (churches, schools etc.),*
- *The Council must attract popular support for the campaign,*
- *A local Fairtrade steering group must be convened to ensure continued commitment to Fairtrade Town status.*

9.8 Recycling of green waste, and other waste

Where possible, fallen or felled timber is left on the ground to increase biodiversity. However, when tree works are carried out woodchip/timber are also recycled back into the park with some timber transported to nearby parks to be used as compost or mulch.

The Parks Team and Green Team aim to develop a number of small-scale compost facilities within its parks with the intention to recycle 30-40% of our green waste within a few years. Relatively few parks are suitable for such facilities as three quarters of our sites are less than one hectare in size. A leaf composting has established in Victoria Park. Green waste is currently separated and taken to the local waste transfer station where it is recycled for use elsewhere. 100% of all Green waste is recycled. In addition, 100% of leaf collected within autumn is shredded and returned to parks throughout Tower Hamlets

The supply of seasonal bedding plants requires that we collect and recycle plant pots and trays after each use. Where possible we ensure that plants are grown in peat-free compost (with the exception of a tiny percentage of feature plants that will not tolerate peat-free composts) and this is monitored through site visits to the provider nursery and at the time of delivery.

9.9 Pesticides and Fertilisers

The Parks and Open Spaces Service is moving away from chemicals where possible, replacing their use with cultural and manual methods.

- *No blanket application of any herbicide or pesticide is used within any Parks and Open Spaces or playgrounds, on either hard surfaces or on planted areas, except for persistent weeds such as Japanese Knotweed which is chemically treated with a contact herbicide (Glyphosate) at least twice in a season.*
- *Brown tail moth infestations are pruned out and the arising's disposed of. It is many years since the Borough permitted the use of organophosphate pesticides.*
- *Rats and other pests are monitored, and outbreaks controlled only as and when necessary.*

Tower Hamlets promotes the use of sustainable methods of weed suppression. The primary method of weed suppression is mulching utilizing leaf mulch recycled from the previous season's leaf fall.

9.10 Water Conservation

There are water access points conveniently located throughout the park, and also water can be accessed directly from the pavilions. However, the use of mulching and compost on trees and shrubs helps minimise water use. New trees also have mulching or matting around bases and are only watered when necessary. Wherever possible, trees planted in the Park are low water demand, which combined with proper mulching and aftercare reduces the amount of watering they require to establish.

9.11 Building Management

There are three earth sheltered buildings in the park, which are the first such publicly owned buildings in the United Kingdom. From the entrance, most of the building is covered with earth and grass and has the appearance of a gentle hillock. A glass front looks out on to the park allowing a lot of natural light whilst the earth mounding provides insulation for the building. The pavilions are currently being used separately as a children's' pavilion, an arts pavilion and an ecology pavilion.

Similar in style to the pavilions, there are also 8 retail units attached to the Green Bridge which are leased to various retailers. These include Peri Peri Chicken, Costa, Burgerz Restaurant, Nandos, Meade's Estate Agent, Starbucks, Cooperative and a bubble tea shop.

The Council also owns some container offices located in the Adventure Park. These container offices were originally brought in to house the Ranger team, however due to alternative office arrangements, these had been let to a neighbouring council service, Urban Adventure Base from the Youth & Community Services.

Adjacent to the Sport Park, there are several railway arch units which the Council sublets from Cross Rail to private, community and Council tenants. These are located near the Skate Park and tenants include: Revolution Karting, Council's Urban Adventure Base, Concordia, Somali Integration Team and the Council's Animal Warden team.

Within the Children's Playground in Locksley Street, there is a small cafeteria unit owned by the Council and is currently under light repairs in preparation for a new tender.

All health and safety checks and building compliance checks are the responsibility of the tenants, or the Council, where management of the building is retained (i.e., the three pavilions).

10 Conservation and Heritage

Protecting conservation and heritage means ensuring that both the natural and historical assets of the park are valued and enhanced, that information is provided to the public about the biology, biodiversity, and history of the site.

10.1 Objectives

To be a conservation and heritage flagship, the following objectives will apply at Mile End Park:

- ***The heritage of the park will be promoted and maintained to ensure that it is fully appreciated.***
- ***To support and develop initiatives in line with the Local Biodiversity Action Plan.***

10.2 Background

As a relatively newly constructed Park, little of the physical heritage remains to be conserved. However, there are some smaller elements that give a flavour of former times, and these should be conserved and interpreted for the Park visitor.

A plaque just outside the park on the Railway Bridge on Grove Road commemorates the place that the first V2 bomb landed in London. This has been incorporated into an information panel in the park to highlight the very real sacrifice made by the people living in this area during the Second World War.



Located on the railway Arches in Burdett Road, just off Mile End Park Haverfield Green (Ecology Park)

Two plaques proclaiming the Park as the King George the V Playing Fields are embedded in the gate piers adjacent to Copperfield Road. Interpretation panels refer to the life of King George V and the setting up of the fund for the development of the park.

A tall brick chimney like structure dominates the area currently known as Kirk's Place and probably dates to Victorian times. It is, in fact, a listed sewer vent and as well as protection and some restoration it should be interpreted either or as a longstanding feature of the local skyline. It is managed by the Canals and River Trust.



Brick Sewer Ventilation Shaft in Kirk's Place

The Regent's Canal, although strictly speaking not a part of the park, does have a symbiotic relationship with the park that should be recognised and celebrated.

An art exhibition evoking the memories of people who had moved to the Mile End area resulted in English Heritage designing two more panels to be sited in the park describing local history through the memories of the wider community in relation to the locale.

10.3 LBTH Local Biodiversity Action Plan 2019-2024

Tower Hamlets is a densely built-up inner London borough. It nevertheless supports a surprising diversity of wild plants and animals in a range of habitats. These include protected species such as bats and the Black Redstart, and several rare invertebrates associated with Brownfield land, such as the Brown-banded Carder Bee and Streaked Bombardier Beetle.

A Local Biodiversity Action Plan (LBAP) for 2019-2024 has been produced by the Tower Hamlets biodiversity partnership, known as 'Tower Habitats'. The partnership includes Tower Hamlets Council, Tower Hamlets Homes, social housing providers, local and London wide voluntary and community groups, businesses, and residents. All of these groups and individuals will be involved in implementation of the LBAP.

The plan identifies priority habitats and species in Tower Hamlets, and sets objectives and, where appropriate, targets for what needs to be done to ensure their conservation. This will inform the implementation of projects and actions by partner organisations. It also provides guidance to developers on the kinds of biodiversity enhancements expected in new developments. The LBAP does not include detailed actions. These will be developed

throughout the five-year duration of the LBAP and will be entered and reported on in the Biodiversity Action Reporting System (BARS)¹, a national database set up by the Joint Nature Conservation Committee to monitor biodiversity action across the UK.

<https://www.towerhabitats.org/docs/TowerHamletsLocalBiodiversityActionPlan2019-24.pdf>

11 Community Involvement

Community involvement means offering opportunities for residents to engage in activities, decision making and learning through the park.

11.1 Objectives

The following objectives have been identified to ensure the Park meets the needs of its users and the local community

- ***The Parks Team support local community groups by accommodating regular groups within the Pavilions to deliver a selection of children's and community programmes.***
- ***Community based activities and events are delivered by the Council and local community groups.***
- ***Work in partnership with the local organisations to ensure the Park is maximised, in relation to its usage and make input to development.***

11.2 Community Involvement

The Parks Team is committed to continuing its community engagement and the relationship it has built between the park and local people.

Community engagement occurs on different levels from user group meetings to individual volunteering, to providing cookery activities for the children. Events successfully engaging the community include the annual Halloween bash where volunteers from the community give up their Saturday evening to dress up and put on a show. They have written their own scripts, designed their own costumes and entertained the residents who attend.

11.3 The Friends

The key outcome of the community involvement process when the Park was being constructed was the "Friends of Mile End Park" (FOMEPE). Since 2010 the Friends took over what had previously been a jointly run event with Parks staff and ran it entirely independently of the park including the raising of the funding to support the event. The event, "Park Life" was deemed a great success and an example of how the Friends work with and on behalf of the park. The Friends group continues to deliver the Dog Show and Fair annually in the Haverfield Green which attracts locals and remains a popular element of the annual events programme.

The FOMEPE is an independent local organisation comprising of a group of volunteers who are users of the park, members from local community groups and residents who work closely with the Council and play a key role in enhancing and protecting the Mile End Park. The group volunteer their time and get involved in a range of projects such as clean-ups, delivering events, fund raising and contributing to the development of the park. They act as the Park's eyes and ears, informing the Parks Team of any issues, together with providing critical feedback.

To ensure good engagement and communication, parks officers jointly walk through the park every quarter with the newly elected FOMEPE chair, John White, and members. This gives an opportunity to discuss any issues, developments, updates, or projects within the park.

The Parks Team will continue to support the annual Park Life event, together with the programmed clean-ups and additional events hosted by the Friends group.

For more information on the FOMEPE or for those wishing to get involved visit link:

<http://www.fomepe.org.uk/>

1.4 Volunteering

There are three distinct types of volunteers who work in the Park, and these are best described as:

- a) *The corporate volunteer mostly drawn from the institutions in Canary Wharf and the City. These tend to offer one day with a team of volunteers tackling a single project.*
- b) *The organised volunteer, often school groups who will attach themselves to a particular ongoing project under the guidance of another outreach programme.*
- c) *Individual volunteering assisting in the playground and growing zone, helping with various children's activities and workshops.*



Each year we receive an average of 800-1000 corporate volunteer, accomplishing a variety of tasks horticultural maintenance, carpentry, planting, and helping to deliver Childrens activities.

The Corporate volunteering scheme is coordinated through the East London Business Alliance.

There has been a pause on this scheme due out the impact of Covid-19, however we hope to resume in summer 2022.



Corporate Volunteers from East London Business Alliance, Summer 2019

11.5 Events

The policy of the Arts and Events Department is to foster community festivals to celebrate diversity and to encourage more small festivals and events and consider larger events as they come forward. The Council prides itself on being the “Festivals Borough”, with more festivals than any other part of London; many of these take place in our parks.

The Arts and Events team help support those wishing to organise events and have various resources which can be downloaded from the Council’s website

<http://www.towerhamletsarts.org.uk/?lang=e&s=38>

11.6 Summer Programme

The Parks Services have delivered small scale events together with various Ranger Time activities. The summer community-based events were delivered as a part of the service’s Green Flag site (or potential Green Flag sites) community events calendar and were delivered in partnership with the Council’s Sport Development Team.

Unfortunately, due the implications relating to Covid-19 no summer activities or events were delivered. The Park however remains an important space during these difficult times, for exercise and recreational use.



5k Park Run, Summer 2019 – takes place every Saturday morning in Mile End Park



Window Box Making



A Day by the Seaside, Summer 2019

The last full programme of Childrens events and activities was delivered in the summer of 2019.

12 Marketing and Publicity

The importance of marketing and publicity is to support the other themes, to help make people feel welcome, to promote community involvement, to promote sustainability, and to encourage exercise and healthy living.

12.1 Objectives

To promote, publicise and market to the right audience, the following objectives have been devised for the Mile End Park:

- ***Ensure that relevant information and interpretative materials appropriate to the site and its character are produced and distributed.***
- ***Activities and volunteer programme to be promoted to ensure all users and stakeholders can be involved in the park.***

12.2 Press coverage

The public can access information about the park and its users from the website and via social networks such as Facebook. There is a Mile End Park Facebook page. This could be developed further.

The Borough's website includes several public relations pieces about the park. These can be found at <http://www.towerhamlets.gov.uk/>

12.3 Interpretation

Interpretative panels have been interspersed throughout the park to allow the casual visitor to explore the full potential of the site. The panels inform and explain what is to be seen in the Park and how the Park contributes to the local history of both the area and its communities. The panels, whilst based in the park also describe the local heritage of a wider geographic area. Heritage signs have also been introduced on a limited basis to give a flavour of the heritage of the site. These include information on the original Pleasure Garden, the King George V Playing Fields, and the local history of the area.

The natural heritage as witnessed in the park forms an integral aspect of the interpretation strategy. The panels cover basic information about biodiversity and local information about flora and fauna to look out for in the park. Also included on the panels are more educational facts that link an aspect of the park to the wider issue and so enhancing a Park visit, for example, the connection of global warming to the earlier hatching of butterflies and the use of early spring bulbs as a pollen source.

More transient, yet more immediate, signs are erected to inform of imminent works. The scale of the works dictates how much in advance the signs are erected. Similar signs inform visitors of activities in the park, for example, holiday play schemes and up-and-coming events. In all cases these signs have a limited life and are removed promptly.

The Internet is a popular source of information, and therefore it is imperative that information available in the park is also available to a web audience and the Parks website offers up to date information as well as this Management Plan.

Other panels offer information on healthy walks to be undertaken in the park. These are headed 'Walk a Mile in Mile End Park' and were originally accompanied by swipe points intended to electronically measure distanced walked. It is believed that this was the first electronic measured mile in a public park anywhere in the world. Due to sustainability, funding and the lack of take up of the scheme, the Parks Team have decided to cease operation. However, the panels have been left as they offer a map for the casual park user to orientate themselves.

12.4 Signage

In the Park the cruciform monoliths (X signs) appear at most entrances. The signs are unique and are an immediate signifier that this is an entrance/exit point at Mile End Park. Their unusual design indicates that this is not a traditional Park, and each sign has cut out lettering preventing defacing, and indicates the direction of main features. The cruciform monoliths have been specially treated in the paint mix to allow for the easy removal of graffiti without recourse to special chemicals or a sacrificial layer treatment. These were all repaired in 2015. A slogan on the sign welcomes new visitors whilst asking them to be kind to the park and other Park visitors. Directional signs offer directions within the park.

During summer of 2015 ten orientation signs were installed across the stretch of the park. Although there was a need for signage identified from local users, this had been further reiterated by the Green Flag judges some years ago and therefore has been on the Park's wish list as priority. By identifying funds from Section106 it was finally possible to develop and install these signs.



The 'X' was installed across the park during the Park's first phase of redevelopment in 2000. The signs were funded by the Millennium commission and act as orientation signs, as well as welcome sign.



An example the orientation sign installed throughout the park. All signs have description of the section of Park in which the signs have been installed. The above sign is located outside the Children's Playground.

12.5 Publicity in literature

Newspaper articles in the local, national and trade press maintain interest in the evolving park project. They cover various aspects of the park, encouraging the reader to see a variety of opportunities to the casual visitor. The consistent message to the reader is that the Park can offer something for everyone and will reward a longer visit.

12.6 Publicity with local organisations

Within the Park itself and around the perimeter there are various community organisations with a strong relationship with the Mile End Park. The Parks Service has a close working relationship with local bodies such as the East London Tabernacle Baptist Church, the Mile End Climbing Wall, Revolution Karting, Concordia Community Organisation, Tower Project, and the Somali Integration Team. There are also various Council services based within the park such as the Sports and Physical Activities Services, the Urban Adventure Base and the Animal Wardens, who all work in partnership to support each other's services.

13 Implementing of Management Plan

This management plan is a vehicle for planning and monitoring how to deliver the aims and objectives of the park.

13.1 Objectives

To ensure it is well managed, the following objectives exist for Mile End Park:

- ***Manage and maintain the Green Flag Award standard***

13.2 Strategic Context

The management of the park sits within a range of legislative, policy and strategic contexts, many of which have been described in the earlier sections of this Plan. The Council has a Strategic Plan representing the Council's contribution to delivering the borough-wide Community Plan, agreed by the Tower Hamlets Partnership and in particular making Tower Hamlets:

- ***a great place to live***
- ***a prosperous community***
- ***a safe and cohesive community***
- ***a healthy and supportive community.***

And furthering the aims of One Tower Hamlets – a more equal and cohesive borough with strong community leadership.

http://www.towerhamlets.gov.uk/lgnl/community_and_living/community_plan/strategic_plan.aspx

The Tower Hamlets Parks service is also governed by the priorities set out by Mayor John Biggs:

http://www.towerhamlets.gov.uk/lgnl/council_and_democracy/the_mayor_and_cabinet/the_mayor.aspx

The management of Park utilises the key criteria set out by Green Flag award to ensure effective management within its Parks and Open Spaces. This plan looks at each criterion and sets out what is done and the key aspirations of the park. The management plan must be compatible with priorities set out by the London Borough of Tower Hamlets, as well the Service Plan for LBTH Parks and Open Spaces, the LBTH Community Plan, and the LBTH Safer Community Strategy.

13.3 Monitoring and reviewing the plan

Monitoring frequency varies according to activity - it can be daily, weekly, or less often, depending on the issue or the activity. General progress on the action plan will be monitored quarterly by the Parks Team.

A formal review of the progress of the Plan needs to be undertaken annually flowing from the monitoring processes. The Parks Team will review this plan with the park aiming for the next review to take place before the end of 2017.

13.4 Performance Management

Managing and monitoring the performance of the park is crucial to the Park's every day running, development and success. One of the most important drivers is the relationship the Parks Team has with the Green Team and its service providers. Ensuring visibility and Parks' presence from the Rangers is also paramount to monitoring and performance.

Below is a list of how performance is monitored:

- ***Monthly walks with Green Team, to monitor standards of grounds maintenance***

- *Monthly walks with Veolia to monitor standards of cleaning*
- *Daily routine checks of play equipment's and ancillary items*
- *Daily patrols by the Community Park Rangers*
- *Monthly operational play inspections by senior officers*
- *Quarterly meetings and walks with the Friends Group*
- *Weekly walk by senior officers*
- *Regular programmed walk by the Council's Arboriculture and Tree Officer, and Biodiversity Officer*

From October 2016 onwards the service also aims to implement a new system of conducting play and operational checks via a new play inspection application using handheld tablet devices. This will provide a more effective, efficient, and accurate way of recording information and addressing issues relating to play and general ancillaries within the park.

13.5 Service Standards

In terms of service priorities, LBTH Parks and Open Spaces:

- *Strives to make all parks and open spaces within Tower Hamlets places where people feel safe, secure, and that visiting such green spaces is an enjoyable experience.*
- *Recognises the importance of parks and green spaces as major community assets.*
- *Fully recognises the importance and benefits of parks and open spaces as places for recreation, leisure and play for all communities within Tower Hamlets.*
- *Recognises the importance of the Borough's parks and open spaces and ensures that all of our wide-ranging communities and partners have equal opportunities to use them.*
- *Encourages the historical heritage of many of Tower Hamlets parks and open spaces and works closely with colleagues and partners alike to protect such cultural assets.*
- *Manages and maintains the Borough's parks and open spaces on behalf of the communities we serve.*

13.6 Design principles for Tower Hamlets Parks and Open Spaces

The key landscape design aims for all Tower Hamlets Parks and Open Spaces will inform any future developments in Mile End Park.

- ***Retain the open, green aspect of the park***
- ***Retain and enhance the main desire lines but avoid criss-crossing the Park with paths***
- ***Enhance the public's feelings of security***
- ***Enhance nature conservation and biodiversity***
- ***Enhance and manage boundary and other planting***
- ***Provide public art features that increase the visual interest and identity of the site and involve the community***
- ***Enhance the attractiveness of the park***
- ***Establish a positive site identity that is clear from within and outside the park***
- ***Focus formal design and ensure that this sight line remains open for all time***

All **design** for the park will be practical and appropriate for its purpose. It should reflect contemporary and reasonably foreseeable needs. It will be sympathetic to the local environment of Victorian and post war housing, and will, over time, seek to lift the quality of the environment locally with appropriate innovations. Layout and detailed design will address issues of security and fear of crime and seek not to create areas in which crime might take place or in which groups could develop dominance of particular facilities. The largest feasible areas of grass should be retained, and design should avoid breaking them up into small areas divided by paths.

Planting design, including choice of species, will take maintenance into account and seek not to increase the burden of costs overall. It shall comprise mostly native species and those that appeal to wildlife (including those providing winter nectar, berries, and shelter). Some planting will be provided with more obvious ornamental and / or cultural appeal. The intention shall be to create as interesting and attractive an environment as feasible and to provide habitats for wildlife.

Materials will be in keeping with the feel of the park simple, robust, durable and vandal resistant. All materials shall have a low lifetime environmental impact and shall be specified in accordance with the sustainable purchasing policies within this document. Site furniture and railings shall be of classic, contemporary design (i.e., not Victorian or Edwardian) and be made of galvanised mild steel painted black.

Art will be used to help establish a clear site identity and will be developed by community involvement (especially of school children). It shall be mindful of security and the need to minimise maintenance.

Paving and so on will not be allowed to dominate the landscape, which shall remain substantially green in contrast to the surrounding environment. Paths shall be aligned to reflect the routes people want to use and to provide as stimulating an experience for Park users as possible.

Any future maintenance and “**backroom**” **facilities** will be screened from the park users and designed for security.

Signage shall incorporate the Borough’s current Visual Identity Guidelines, identify who manages the site, give a contact telephone number, and provide guidance on facilities to found in the park and on behaviour to be expected. Signs must welcome visitors to the park and avoid lists of dos and don’ts. Signs will be clear for those with sight and language problems, replacing as many words as possible with graphic symbols.

14.1 Previous Year's Action Plan & Progress 2021-22

Note: some objectives were primarily focused to accommodate the circumstances of Covid-19 and its impact on the park.

Welcoming

Area	Objective	Who	Date of completion	Resources	Notes
All	Continue with minimum of 5 patrols weekly.	MR	Ongoing	Park rangers and trainees.	Ongoing
All	Worked with the Council's Rough Sleeping Team to engage and address rough sleeping issues.	Rough Sleeping Team	March 21	Rough Sleeping Team	Have had fast responses over 2021-22, with accommodations provided. However, this issue is ongoing and will manage as and when required. Ongoing.
All	Increase litter picking in areas of park with more usage (this includes the Events Fields, Wennington Green).	KW	Ongoing	Common in sports, recreation and picnic areas.	Improvements noted. Will explore more resources for the summer 2022 period.
	Renovation of the existing Adizone Outdoor Gym in Wennington Green.	PS	TBC		Completed. A completely new outdoor gym has been installed in Wennington Green.
	Installation of new playground in Ecology Park.	PS	2021-22		Replaced outdated 1 play equipment, with now 4 new equipment's.
	Multi Use Games Area x2 full refurbishment, with improved flooring, goal post, basketball hoop, line marking.	PS	2021-22		Located in the Outdoor Education area, since its first installation in year 2000.
	BMX track improvement	PS	2021-22		Full refurbishment of the track since its development in 2013.

Healthy, Safe and Secure

Area	Objective	Who	Date of completion	Resources	Notes
All	Ensured play areas are inspected daily, monthly and annually by Community Park and Play Rangers, Parks Officers and externally by qualified RPII inspectors.	PS/MR	Ongoing, daily, monthly, annually	Rangers	Implemented well and monitoring with progress. Completed and ongoing.
All	Risk Assessments for the Park, children's play area and any events in parks are reviewed annually.	PS/MR	Ongoing	Rangers Work with Events team regarding events.	These are being revised as necessary. Completed.
All	Effectively addressed ASB related issues, in partnership with the Tower Hamlets Enforcement Officers, Rough Sleeping Team, ASB Team, and the Safer Neighbourhood Team.	PS/MR	Ongoing	Park Rangers TH Enforcement Officers ASB Team Safer Neighbourhood Team	Increase partnership work with Tower Hamlets Enforcement Officers and Safer Neighbourhood Team. Gather intelligence of ASB and work with partner services to address issues. Ongoing.
All	Identified locations that could benefit from lighting in particular the Skate Park location.	MR	March 21	Parks Team Street Lighting	Completed – installation due to 2022-23
	Increased security within the vacant Network Rail units, to ensure there are no break in or squatting. CCTV, Lighting, Fencing, more site patrols.	MR	Summer 2021		Ongoing. X4 CCTV now upgraded Lighting along sports park to be installed in 2022-23
All	Installation of upgraded lights in the Arts Pavilion, and internal CCTV system to link it to the main Town Hall Town Centre management system.	PS	2021-22	From income.	Completed. To do Ecology Pavilion next year.

Well Maintained and Clean

Area	Objective	Who	Date of completion	Resources	Notes
All	Additional bins across the parks in high footfall areas such as the Events Fields, Wennington Green and through the central pathway for users.	KW	March 22	Some temporary bins were in place for summer 2020 but need for permanent bins.	ongoing
All	Ensured cleansing is taking place regularly on site, in particular key areas. Issues identified will be flagged back to a monthly Cleansing Monitoring Meetings.	KW	Ongoing	AA to be leading on this in absence of KW	Ongoing. The Cleansing Team have been stretched through the Covid-19 period and the high usage of users throughout the 125 sites. Parks will continue to work with the Green Team and Cleansing Team to ensure resources are distributed and monitored effectively.

Sustainable

Area	Objective	Who	Date of completion	Resources	Notes
AP & EP	Management of aquatic planting in the Ecology and Arts lakes, with a particular focus on reed reduction.	KW/PS	Tbc	Corporate Volunteers/ Specialist Contractor	Paused.

Conservation and Heritage

Area	Objective	Who	Date of completion	Resources	Notes
All	A Mile of Green Canopy. This is a project to have a continuous run of green canopy through the stretch of the park from north to south. Planting of trees started in 2020, and we aim to complete this project with more trees in autumn 2021.	MR & Green Team	Autumn 21	Parks, Green Team and Trees fir Cities	Completed.
All	Coordinate a group of volunteers to help patrol the park with the rangers during the covid-19 period.	MR	Ongoing	Community volunteers	Completed. Now have 4 trainees to help patrol.

Community Involvement

Area	Objective	Who	Date of completion	Resources	Notes
AP / EP	Provide a free space for the Arts Pavilion and Ecology Pavilion to facilitate as NHS test centres f0r covid-19.	Parks Team	Ongoing	N/A	Completed. We have restarted to use the venue for private hire now.
All	Continue with community volunteering to assist Park Rangers to patrol the park.	Parks Team	Ongoing		This is an excellent resource, particularly where the departments extremely stretched at the moment. The volunteers patrol with the Park Ranger's engaging with the public, identifying issues n site, and helping with litter clearance.
	Work with the community groups to further establish the Clinton Road Community Gardening project to deliver activities for the community.	MR/PS	Summer 2021	TBC	Completed, and continue to work with the group. Permanent watering is being sourced.

Marketing and Publicity

Area	Objective	Who	Date of completion	Resources	Notes
AP	Installation of information and interpretation on signs, displaying additional horticultural, wildlife and historical information.	MR/KW	Winter 2021		Reprogrammed for 2022-23, however will be installing MEP orientation signs only.

14.2 MEP Annual Objectives (2022 – 2023)

Note: some objectives were primarily focused to accommodate the circumstances of Covid-19 and its impact on the park. Other objectives are also dependent on the Government measures and the impact of Covid-19 through the financial year.

Objective	Who	Date of completion	Notes	Progress
Welcoming				
Continue with minimum 5 patrols a week on site.	Park Rangers	March 23	Including Play inspection and H&S visits.	Identify repairs, graffiti, issues, and for community engagement.
Renewing of the dog agility equipment's in the dog exercise area.	PS	Summer 2022		Some existing equipment has now come to end of life and needs replacing.
Support the Friends Group as and when can with delivery of tasks such as cleansing, bulb planting, horticultural maintenance.	Park Rangers	March 23		Ongoing support. Provided support with resources to help clean, and plant bulbs in the park.
Opportunity additional office facilities to facilitate social distancing and community engagement delivery.	Parks Team	tbc		Resources is being explored to accommodate an office and engagement space in the Playground area.
Increase litter picking in areas of park with more usage (this includes the Events Fields, Wennington Green).	KW	Ongoing	Commonly in recreation, and picnic areas.	Try to secure extra cleaning resources for the summer and spring periods, by way of additional cleansing manpower and extra bins.
Installation of 8-10 updated orientation signs across the park.	MR	Summer 2022		To be installed in new places and replace outdated damaged boards.
Upgrading of the internal lights in Ecology Pavilion.	PS	2022-23	Arts Pav. did last year.	Lighting is more energy efficient and cost effective than previous.
Healthy, Safe and Secure				
Address ASB related issues, in partnership with the Tower Hamlets Enforcement Officers, Rough Sleeping Team, ASB Team, and the Safer Neighbourhood Team.	MR	Ongoing	Park Rangers TH Enforcement Officers	Increase partnership work with Tower Hamlets Enforcement Officers and Safer Neighbourhood Team. Gather intelligence of

			ASB Team, SNT.	ASB and work with partner services to address issues. Ongoing.
Installation of streetlights in identified areas within the Park in particular south of Park, along BMX track.	MR	By winter 2022	Progressive, subject to funding	To be installed by summer 2022.
Additional CCTV to be installed in the playground and through the park.	MR	Summer 2022	Part of a wider CCTV programme borough wide.	By summer 2022, using capital funds.
Well Maintained and Clean				
Additional bins across the parks in high footfall areas such as the Events Fields, Wennington Green and through the central pathway for users.	KW	By March 23	Temporary bins summer 2021 but need for permanent bins.	Temporary bins were positioned, however permanent bins required. Funding being explored.
Ensure cleansing is taking place regularly on site, in particular key areas. Issues identified will be flagged back to a monthly Cleansing Monitoring Meetings.	KW/AA	Ongoing	AA to be leading on this in absence of KW	Parks will continue to work with the Green Team and Cleansing Team to ensure resources are distributed and monitored effectively.
Sustainable				
Management of aquatic planting.	KW/PS	2022-22		Carry over from 21-22 due to contractor availability.
Conservation and Heritage				
Commit to plant 5,000 naturalised spring bulbs annually.	MR	Autumn 2022	Achieved.	Completed in 2021/2 (10,000 bulbs) Aiming for 5,000 for 2022-23. Planted in various locations in the park.
Community Involvement				
Continue to facilitate the opening of service providers within the Play Pavilion to deliver children's sessions and activities. Stay & Play, Toy House and Home Education have resumed delivery and we hope to continue to support them as necessary.	PS	Ongoing	Facilitate according to Govt Covid-10 guidelines	Have resumed since November 2021 due to Covid measures relaxing.

Facilitate Corporate Volunteering.	MR	Ongoing		It is difficult to set quantity, however we aim to resume with a soft start and accommodate the scheme through the summer and spring period.
Delivery of term time Childrens indoor and outdoor activities.	PS	2022-23		To deliver a variety of activities by the Rangers, including arts and crafts, wildlife, planting, and sport.
Marketing and Publicity				
Installation of information and interpretation on signs, displaying additional horticultural, wildlife and historical information.	MR/KW	Winter 2021		<p>Help promote events on information boards throughout the park.</p> <p>Field survey identifying locations benefitting from further finger point signs.</p> <p>Orientation signs to be installed in summer 2022.</p> <p>Identify further Ecology and Arts Pavilion direction signs.</p>
Continue to work with the Friends Group to promote the park's offer via social media, with new activities and events.	Parks Team	Ongoing	Ongoing	This is dependent on Covid-19 measures and future impact. However, the social media will continue to be used as an important portal to communicate key information to park users.

Appendices

Appendix A

Events and activities did not take place in 2020-21 period, with limited delivery during 2021-22 period due to Covid-19. However, data from previous year (2019-20) of delivered activities and events has been provided to demonstrate typical number of deliveries and participant numbers we attain through our busy community engagement offer.

Total Individuals benefiting/taking part	13'724	2,834	1,748	2,159	983	6,000
Events and Activities Total Number	230	185	24	5	15	1
	Total Number	Stay and Play	MEP Activity	MEP Events	Corp Vols	With VP

Appendix B

Enabling Maps

Enabling Maps provide a pictorial step free map to amenities within the park.

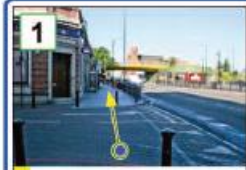
A step-free route from Mile End Underground station to the Childrens Play Park. 1



This map takes you from Mile End Underground station to the Childrens Play Park. See back page for information about accessible facilities and bus routes.

The journey is around 440 metres long. It should take around 10 minutes to finish. If you have difficulty getting about, it could take 20 minutes.

Under each picture is a time-bar to show how much of the journey there is to go.
 = the length of travel for each part of the journey
 = the length of travel already completed



1 Turn left outside Mile End Station, the Green Bridge is in front of you. Cross over Eric Street.



2 At the corner turn left and use the pedestrian crossing to cross Burdett Road.



3 Turn left and walk down Burdett Road.

A step-free route from Mile End Underground station to the Art Pavilion. 1



This map takes you from Mile End Underground station to the Art Pavilion. See back page for information about accessible facilities and bus routes.

The journey is around 210 metres long. It should take around 5 minutes to finish. If you have difficulty getting about, it could take 10 minutes.

Under each picture is a time-bar to show how much of the journey there is to go.
 = the length of travel for each part of the journey
 = the length of travel already completed



1 Turn left outside Mile End Station, the Green Bridge is in front of you. Cross over Eric Street.



2 At the pedestrian crossing on the corner cross over Mile End Road to the 2nd island. Then turn right and cross Grove Road.



3 Turn right and go along Grove Road. Go past the bus stop and coin (20p) operated accessible toilet.

Appendix C1 Tower Hamlets Parka: Risk Assessment

Risk Assessment	Date Assessed / reviewed	Date due for next review	Reviewed / assessed by	Notes
Collecting, handling, transporting and disposal of syringes and other drug user waste	April 2021	April 2022		
Fertiliser application	April 2021	April 2022	reviewed by MT and GC	
Flower and Shrub bed maintenance	April 2021	April 2022	reviewed by MT and GC	
Generic assessment on the effects of terrain and weather	April 2021	April 2022		
Litter picking	April 2021	April 2022		
Lone working	April 2021	April 2022		
Maintenance of machinery and fitters activities	April 2021	April 2022		
Manual Handling	April 2021	April 2022		
Manual handling and stacking of produce / arisings	April 2021	April 2022		
Mobile work equipment, cutting grass and vegetation	April 2021	April 2022		
Operations adjacent to the highway	April 2021	April 2022	reviewed by KMT	
Pesticide application	April 2021	April 2022		
Planting	April 2021	April 2022		
Safe use of hand tools	April 2021	April 2022		
Shrub and Tree Pruning	April 2021	April 2022		
Unloading machinery	April 2021	April 2022	reviewed by MT and GC	
Use of clearing saws, brush cutters and trimmers	April 2021	April 2022		
Use of commercial and non-commercial vehicles	April 2021	April 2022		
Use of display screen equipment, including laptops in any workplace	April 2021	April 2022		
Use of hand held hedge cutters	April 2021	April 2022		
Use of high pruners	April 2021	April 2022		
Use of ladders	April 2021	April 2022		
Use of leaf vacuums	April 2021	April 2022		

Use of pedestrian mowers	April 2021	April 2022
Use of rotovators, cultivators, scarifiers and rollers	April 2021	April 2022
Use of temporary work access platforms and staging	April 2021	April 2022
Use of trailers	April 2021	April 2022
Violence to staff	April 2021	April 2022
Weeding, cleaning and hand held cutting	April 2021	April 2022
Working at heights	April 2021	April 2022
Working in Offices	April 2021	April 2022

The above is a list an overall list of risk assessment reviewed by Green Team Management and Supervisors for Green Team gardeners. Individual risk assessments are assessed by management for staff and collectively reviewed

Appendix C2 Green Team Risk Assessment Form Sample

Activity/Task: Lone Working

Carried out: April 2021

To be reviewed: April 2022

Hazards	Risk Rating (High, Med, Low)	Controls
Trip or fall due to uneven terrain	Medium	<ul style="list-style-type: none"> • Visually assess terrain and decide if it safe for you to walk on. • Report any dangerous paths or surfaces to administrator/supervisor. • If terrain is judged to be dangerous find an alternate route. • HSE guide preventing slips and falls code ref INDG 225.
Injury caused by collision with vehicle/road infrastructure	Medium	<ul style="list-style-type: none"> • Follow the Highway Code • Possess clean driving licence. To be inspected by a supervisor every 6 months • Possess Council driving licence. • Ensure vehicle is road worthy by making a visual check. • Hse Driving at work code ref INDG 382.
Verbal assault from public or contractors	Medium	<ul style="list-style-type: none"> • Follow Council Codes of Practice. • Follow Council Policy Statements. • Carry Council issued mobile phone at all times when on duty. Do not use the phone whilst driving. • Assess situation and do not approach a situation you judge to be dangerous. Move away and when at a safe distance and/or hidden from view phone the compound or colleagues to report the situation. • Inform police as appropriate
Accident due to inclement weather	Medium	<ul style="list-style-type: none"> • Wear Council issued coat in cold/wet weather. • PPE regs code ref INDG 174 • Steel toecap boots or shoes must be worn at all times.
Accident whilst lone working	Medium	<ul style="list-style-type: none"> • Report in at the start and end of shift • Let colleagues know your whereabouts • Hse working alone code ref INDG 73.
Physical Assault from public or contractors	Low	As above
Personal stress	Low	<ul style="list-style-type: none"> • Talk to Supervisor. • Ring confidential help line on 0800 716619 for support
Accusation of inappropriate behaviour	Low	<ul style="list-style-type: none"> • Behave appropriately and respectfully with all members of the public. • Do not isolate oneself with children unless in emergency. • Carry/wear identification at all times.
<p>People at risk: Employees Non employees</p>		

SAFE SYSTEM OF WORK - Control Measures Required to Avoid or Minimise Risk	
1) Before Starting Work: Ensure your mobile phone is charged and that you have it with you	
2) Safe Working: Report any damaged or faulty equipment or PPE Report any incidents involving aggressive customers to your supervisor or a colleague. Report any incidents involving park users to your supervisor or a colleague	
3) Upon Completion: Report any problems to callout officer or supervisor	
Overall Task Residual Risk (High, Med or Low) After Implementing Control Measures Low	
Are the Risks Adequately Controlled	Yes / No
(If No This Activity <u>Must Not</u> Take Place)	
Assessor Name: Matthew Twohig Signature: _____ Date: April 2021 Date Communicated to Staff:	

RISK ASSESSMENT REVIEW	ADDITIONAL CONTROL MEASURES
Are Employees Complying: Yes / No	Staff to attend Dealing with aggressive behaviour course.
Have Any New Hazards Been Identified: Yes / No	
Are the Risks Adequately Controlled: If No This Activity <u>Must Not</u> Take Place.	Yes / No
REVIEWED BY: Date:	Signature:
Date Communicated to Staff (if findings different):	

Contact Details

For any queries relating to the Management Plan please contact the author:

Mohammed Raja
Parks Development Officer (Community)

Arts, Parks & Events Services
Parks & Open Spaces
6th Floor Mulberry Town Hall
5 Clove Crescent
London E14 2BG

Tel: 020 7364 6108

mohammed.raja@towerhamlets.gov.uk

www.towerhamlets.gov.uk