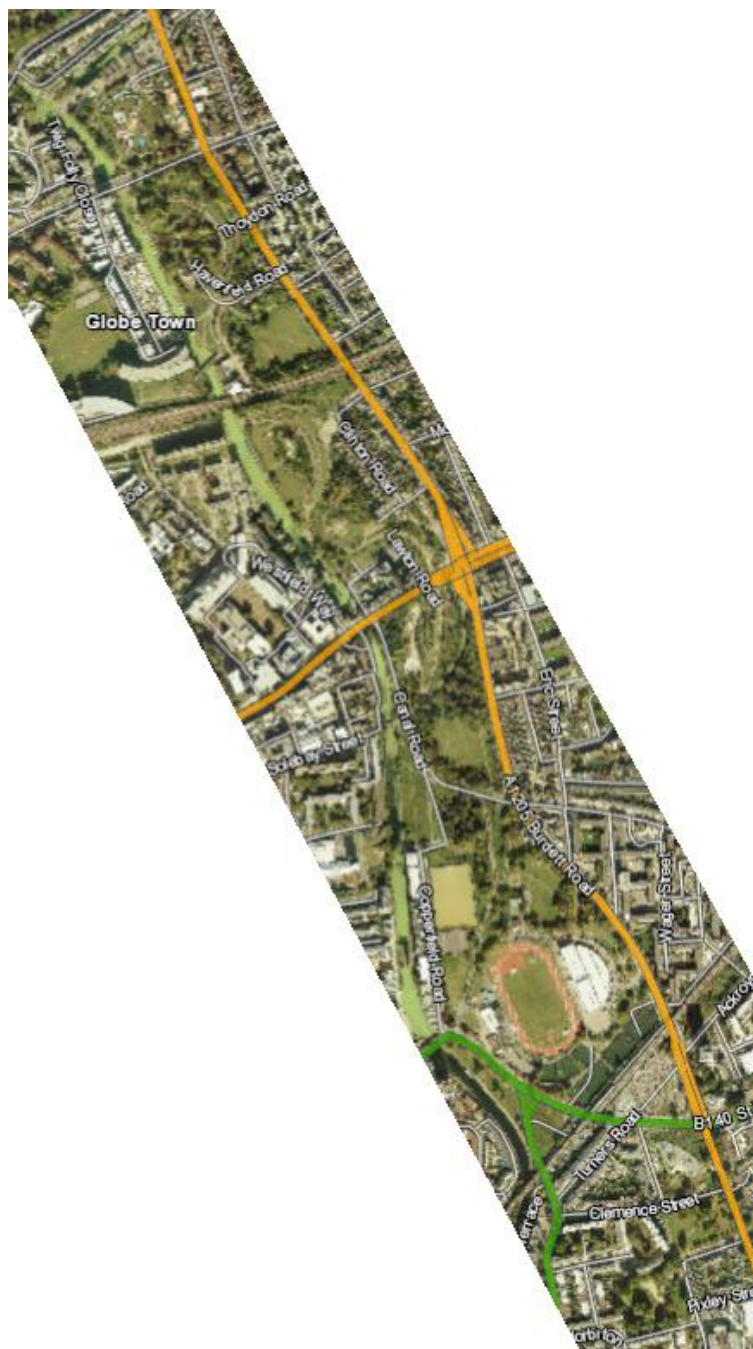


Mile End Park Management Plan 2014

‘A Change in Time’



Arts, Parks & Events Services | Communities, Localities & Culture Directorate
London Borough of Tower Hamlets

Tel: 020 7364 6108

mohammed.raja@towerhamlets.gov.uk

www.towerhamlets.gov.uk

CONTENTS

Section		Page
1.0	Introduction	9
2.0	Mission Statement	13
3.0	Vision	13
4.0	Recent History	13
5.0	Historical Context	14
6.0	The Park Deconstructed	15
	The Arena	
	The Ecology Park	
	The Art Park	
	The Green Bridge and Terrace Garden	
	The Adventure Park	
	The Sports Park	
	The Children's Play Park	
7.0	Interpretation	30
8.0	Signage	31
9.0	Forums	31
10.0	Community Involvement	31
11.0	Health and Safety	34
12.0	Security and the Community Rangers	35
13.0	Maintenance	37
14.0	Environmental Impact of the Park and Sustainability	39
15.0	Conservation	40
16.0	Marketing	41
17.0	Management	42
18.0	Action Plan	47
19.0	Individual Strategies	49
Appendices		
A	Corporate Policies and Strategies	50
B	Events in Mile End Park	54
C	School term and holiday dates	56
D	Events Manual	59
E	Enabling Maps	65
F	Segmentation of Park	66
G	Map showing dimensions of Park	67
H	Provision of Landscape Maintenance Services (sample of Service Specification for Contractor)	68
I	Map showing Amenities of the Park	70
J	Photo Library	71

Mile End Park Management Plan 2014

Guidance on reading the Mile End Park Management Plan

The Management Plan is really four plans bound as one, and in some circumstances will be read as four distinct plans.

The main and over arching plan is the Management Plan with a clear contents list to guide the reader. It looks at the successes and some things that were less successful from last year's plan and what has been done to address the comments of the judges from their previous visit. It is laid out to show the history and development of the park and offers a description of the various zones within the park. Finally it has an action plan for the coming year. It was sent out to the Mile End Park Partnership Board, each of the three forums, (Ecology, Art and Play) and of course the staff themselves. All comments received were considered and wherever possible incorporated into the final version.

The other three strategies are the results of the three specialist forums and go into much more detail in the areas of Ecology, Play and Art. These were the work of the various forums drawn together by the Director and are based entirely on the contributions of each group. Each has its own contents page and action plan and is bound as one document to highlight the fact that these are live documents and will be given equal status within the overall management plan. In other circumstances they would be put into the relevant section within the management plan but for reasons of sustainability it was more prudent to design in such a way as to allow each to also be printed separately.

In reality the forums generally work from the particular strategy relevant to their group although there can be a degree of cross over.

It is intended for the Mile End Park Management Plan to be organic and develop as each group and their contributors develop. This will only occur if the forums can see their work reproduced on the ground. This remains an ongoing objective for Mile End Park.

Each year we give the park a focus,

- 1) 2004 Bringing the countryside to the East End
- 2) 2005 Inclusive play.
- 3) 2006 Art for Arts sake
- 4) 2007 Making Ourselves Heard".
- 5) 2008 Building on Success,
- 6) 2009 Playful Park
- 7) 2010 Tightening belts.
- 8) 2011 Means Business
- 9) 2012 Getting fit for the Olympics
- 10) 2013 Leaving a Legacy

This strategy has worked well for ten years and in 2014 it will be the year of "Mile End Park A Change in Time," as the park looks towards new ways of working.

Judges Comments from 2013 and the response of the park

Desk Assessment Feedback

Band score 20-24

Criteria	Strengths	Recommendations	Actions
Presentation	The Mile End 2013-14 management plan document is mainly written in a narrative/descriptive style, explaining how the different aspects of the park work together. its strap line 'leaving a legacy' is eye catching.	The plan is mostly a description of how the park is due to be managed this year, rather than a set of actions planned over a number of years to improve the park. A five year action plan could be created to support the plan, if this would be of assistance in the future development of the park.	We intend to develop an extended plan to a 5 year plan as suggested. Currently an annual will continue to be implemented as it is appropriate for the annual objectives and developments made with in the park. Please see 1.1.1. However the suggestion of a 5 year plan is currently being looked at.
Health, Safety & Security	Section 11 & !2 of the plan outlines the approach taken to Health and Safety, it focuses on policy statements and highlights that risk assessments are reviewed every six months. Training provided is also outlined. It also highlights that play equipment visual inspections take place daily, monthly inspections are undertaken by a qualified member of staff and six monthly independent inspections are carried out by ROSPA. Rangers are CRB checked and provide a welcoming, secure presence in the park. CCTV is in place in some parts of the park and lighting is provided.	Continue as described unless issues require attention. Future judges might ask to see risk assessments or play inspection records.	The park has a full comprehensive library of inspections and these documents can be provided upon request.
Maintenance of equipment, buildings & landscape	Maintenance of the park landscape is described in section 13. Cleaning of buildings is also covered. Good to see that the plan covers work to resolve the issues with the green bridge and water ingress into the shops below. Also positive to see that the cascade ponds has had work carried out in an attempt to resolve issues. A bid for funding to renew the central reservation planting along the spinal path has been made.	The plan could include more information about how the park buildings and infrastructure is to be maintained.	The management, operation and daily maintenance is currently being revised. Once these changes are explored and implemented the management plans will be updated accordingly.
Litter, cleanliness,	Section 12.5.2 indicates that rangers supplement the contracted litter	Continue this approach unless issues need addressing.	

vandalism	collection - which can be up to four times a day in the summer. They also respond to fly tipping and broken glass. Graffiti removal is highlighted to take place every morning - so graffiti is always removed within 24 hours.		
Environmental Sustainability	The plan highlights that a bore hole has been used to provide water for the park (license due for renewal in March 2013). Dead wood is retained on site and composting of grass and green waste is carried out. Pesticide use is limited.	It would be helpful if the money require for a new motor for the wind turbine could be secured - or perhaps the turbine could be removed?	Both suggestions have been explored and due to the large cost implications it has not been a priority. Although we continue to aim to either repair or remove the wind turbine, it does in its current state provide a visual display which compliments the ecology park.
Conservation of heritage & nature	The plan outlines the nature conservation and heritage interest of the park (section 15). The plan emphasises that large areas of the park are maintained as longer grass to enhance the biodiversity interest of the park and help reduce costs. Actions from the ecology strategy are listed (18.3).	Continue as outlined in the plan unless issues need to be addressed.	
Community Involvement	<p>A great range of interesting facilities and activities are to be found within the park and its associated buildings - for people of all ages and interests and this is described well in the plan. This is one of the key strengths of Mile End Park's 'offer' and sets the park apart from many other parks.</p> <p>A play forum, art forum and ecology forum provide opportunities for 'local experts and enthusiasts' to have input into policy and direction around each theme.</p> <p>Volunteering opportunities are also described in the plan.- this includes a helpful outline of three types of volunteer who work in the park (section 10.7.1) There is also a Friends group for Mile End Park.</p> <p>Information for members of the local community is provided through twitter and Facebook. A Halloween event forms a key focus for community input.</p>	<p>The plan could explain how membership of the forums is decided. Perhaps notes/minutes of forum meetings might be requested by future judges.</p> <p>The plan indicates that GreenStat was used to gather feedback about the park- this will need to be revised as GreenStat is no longer available?</p>	The Friends group recently has appointed a new Chair due to the lack of time and availability of previous Chair. More details on this will be provided.
Marketing Strategy	Section 16 provides an outline of the activities that contribute to marketing/promotion of the park and its facilities. It is good to see the art forum has developed marketing of the exhibitions taking place in the art pavilion.	Some aspects of the webpages would benefit from updating - for example the GreenStat link does not work and the 2013-14 management plan and arts, ecology and play strategies are not yet on the website.	The council website is currently being refreshed, and this will include changes to Mile End Park section.

	The Mile End Park webpages are seen as a key way to promote the park and its facilities.		
Overall management	The plan provides an overview of the park's management.	Continue to make progress.	
Additional comments			

Field Assessment Feedback

Band score 50-54

Criteria	Strengths	Recommendations	Actions
A Welcoming Place	Site based staff provide a welcoming presence throughout the park.	It is quite difficult to find your way around the park unless you are already familiar with it - the planned introduction of the route finding map boards (similar to TfL's map signs) will be a great help.	Funding from Section 106 have been secured for orientation signs to be installed all across the park. We hope to have these installed in 2014.
Healthy, Safe and Secure	The park appeared to be a safe place to visit, dog fouling was very minimal and the range of facilities was very appropriate. The fact that a cafe at the art pavilion is now almost in existence is good to see - keep it going! The Walk a Mile oyster card type system has great potential.	Continue the good work.	
Clean and Well Maintained	Building and equipment maintenance appeared to be generally good. Significant improvements are currently being made to horticultural standards - tackling issues such as brambles in formal flower beds, this is great to see. The site was generally more or less litter free on the afternoon when the formal field assessment took place.	<p>Litter levels were significant earlier in the day, before the formal assessment took place - it appeared from the flurry of litter picking activity that took place just before the judging that there may be some issues to resolve with these arrangements.</p> <p>While it was encouraging to see piles of wood chip for use as mulch, the rather untidy piles did detract from the appearance of the locations where they had been placed, perhaps there is a way to resolve this. The pond waste could have been removed a little earlier or plastic bottle waste removed from it to make it less of an eyesore by the formal pond feature.</p>	<p>The litter issue has been reported to the cleansing team Veolia. We believe due to the transfer from Fountains to Veolia was during the period when judging took place, and over time the new Veolia have been more effective and efficient with cleansing. Monitoring of litter has also increased by our staff.</p> <p>The pile of woodchips was dropped off for a corporate volunteer group, who unfortunately cancelled, and was removed straight after judging.</p> <p>The latter suggestion is being considered.</p>
Sustainability	The design of the earth covered buildings can contribute to energy conservation. The supervisor in charge of horticulture and grounds maintenance confirmed that herbicides are not in general use other than for spray treatment of Japanese knot weed. Woodland management and some arboricultural work has taken place.	<p>There could be benefit in investigating whether a treatment could be placed on the large expanse of glass on some buildings to reduce passive heat gain in summer months.</p> <p>Explore use of stem injection of glyphosate as an effective treatment for Japanese knotweed - Greenwich have used this to very good effect for example.</p>	Both suggestions are being explored.

Conservation and Heritage	The work carried out to resolve the significant problems at the parks iconic green bridge have made a significant improvement to the landscape.	Ensure that follow up work takes place at the green bridge to avoid this area becoming problematic again.	
Community Involvement	The provision of a wide range of activities for children and young people at Mile End Park appears to be head and shoulders above the provision at some other sites and the staffs involved demonstrate a very positive approach to their work. The Arts Forum's work to realise the potential of the arts pavilion is commendable. The three forums model appears to be a good way to animate different aspects of the park. The Friend's of Mile End Park's Fair and Dog Show is a good way to promote the park and the Friends group.	The Friends Group representative expressed concern about the departure of the Mile End Park Director, this may continue to be an issue for a while as he was so strongly associated with the park. It will be helpful to keep in regular contact with the group.	The friends group meet quarterly and the Parks Development Officer for Community conducts monthly walks with the Secretary to discuss issues, developments, feedback etc.
Marketing	The A4 events notices by the play area were smart and attractive. Educational events take place , mainly for young people - such as the jam making and food growing and cooking activities. There are some useful resources on the website.	Perhaps, given the iconic nature of the park, a leaflet with a map of the park and its interesting facilities could be provided at some key locations? As the website has useful resources - perhaps it would be useful to have one or more computers available for people to access this information while on site?	This is an good idea and the parks staff have been exploring this for some time. Further to the orientation signs being installed and further to funding being secured we hope to re-visit this suggestion.
Management	There are some major changes taking place in staffing and the contractual arrangements for the care and maintenance of the park and this appears to be supporting the improvements.	Continue to use the management plan and three supporting strategies to give direction and co-ordination for the park.	

Additional Comments

The wide ranging play 'offer' for people of all ages at the park is very strong and great to see. The park was showing signs of positive improvements to horticultural standards and the significant improvement work at the green bridge is also encouraging.

Introduction

1.1 This is the eleventh management plan and is the natural progression from the previous nine. The Head of Arts, Parks and Events observations over the year together with the views of others, particularly those of the Parks Team, the Mile End Park Rangers, Ecology Forum, Play Forum and the Art Forum and the Friends of Mile End Park are all within the plan.

The relationship between the Friends and Mile End Park has continued to develop and whilst meetings between the previous Head of Service and the Chair of the Friends ceased, we hope to re-establish this link with the appointment of a new Chair. The Park's Development Officer is the key link with the Friends Groups and meets regularly with the Secretary conducting walks across the park.

1.1.1 A new plan containing objectives for 5 years was drawn up three years ago. This is reviewed annually, and additional objectives may be introduced whilst others may be amended or deleted each year as deemed appropriate when the plan is reviewed.

1.1.2 All three documents, the Arts Strategy, the Play Strategy, and the Ecology Strategy appear as updated versions. Once again these are included as important parts of the overall management plan but will also be used separately by the various forums. These strategies are deliberately produced alongside the management plan so that each Forum can see the results of their time and work directly informing the direction of the park. The objectives are collated in this document.

1.1.3 The Forums continue to challenge and move the Parks Team out of his comfort zone, which is taken as a sign that there is a less autocratic approach to managing the park. However, the final responsibility for any decisions continues to rest with the Head of Arts, Parks and Events.

1.2 Review of last year

1.2.1 The Objectives in the 2012 Action Plan collated objectives for the park in general and from each specific forum, the latter are repeated in the individual strategy as the strategies are working documents for each group. All the objectives were the responsibility of the Head of Arts, Parks and Events and the Mile End Park team.

1.2.3 Review of Park achievement in general

1.2.4 The transformation of the Arts and Ecology Pavilion into a wedding venue for weddings and similar occasions helped raise income levels making the pavilion more self sustainable as well as significantly reducing contributions from the local authority has become more important in these times of increasing austerity.

1.2.5 The Short Breaks Gym officially started functioning in 2013, and is used regularly by various youth groups.

1.2.6 Despite another restructure and with reduced resource including losing two park rangers the involvement of corporate volunteers continued at its high with average 1500 volunteers in the Park alone.

1.3 Review of Ecology achievements

1.3.1 Latest Spider count is 160 spiders and 351 beetles, with four new spiders recorded, and 26 new beetles. The new spiders are two common money spiders: (*Dismodicus bifrons* and *Pacadicnemis pumila*), a Nationally Notable spider associated with old grassland (*Centromerus incilium*), and *Mermessus trilobatus* which is a newly arrived species (from N America) only recorded in 2012 and 2013 in the Thames Gateway/London area. This was the first record for London County.

1.3.2 The Bio-Diversity Officer has led on the initiative to get the park upgraded from a Site of Important Nature Conservation to site of Metropolitan Importance.

1.3.3 Habitat maintenance has proven to be very important as by fencing off an area to protect the habitat of the Striped Bombardier Beetle the area began to develop into scrub which is not the correct habitat. The fencing has been strengthened, scrub removed and brick rubble and brick dust imported in small quantities to improve the habitat.

1.3.4 Another wild flower meadow was sown in the area opposite the Ragged School Museum but this has proved less than successful which may be due to the high rainfall in the summer or because the land is too rich. It is proposed to observe this for another season to quantify the success rate.

1.3.5 Over one thousand whips have been planted in Wennington Green that will further add to the biodiversity and horticulture of the park. In addition it will serve the aesthetic purpose of disguising the metal fence that whilst simple continues to mar the area that is mainly wild in appearance. The hedge will be restricted to the same height as the fence so as not to offer opportunity for anti-social behavior to take place or to reduce perceptions of safety.

1.3.6 A beehive was developed in partnership with the Youth Offending team in order to enhance the ecology curriculum activities already delivered. This has finally been successfully completed and is used regularly for sessions.

1.4 Review of Arts achievements

1.4.1 The Art Pavilion continues to make a name for itself on the Art scene and 2013 saw the fullest programme yet with exhibitions being mounted throughout the year right up to Christmas. At last the Art Pavilion has developed into the gallery that was envisaged when it was first built thanks to the dedication of a small group of volunteers. The Art Forum has gone from strength to strength and has almost taken over the running of the Art Pavilion as a gallery space. Due to a more constant presence the number of bookings has significantly increased. This was probably the final aspiration of the original park master plan and due to a lack of funding has taken until now to be fulfilled.

1.4.2. The Art Pavilion is now to be opened from 9.00am to 6.00pm which as well as encouraging regular visitors to the exhibitions it allows public use of the lavatories in the building hence serving the park. This too was an original aim of the management plan.

1.4.3 The schedule for the Gallery has continued to reflect the aspirations of the Art Forum with several graduate and post graduate shows now forming part of the programme which mixes with several shows from established artists and from groups within the local community.

1.4.4 The Arts Forum's website is undoubtedly attracting more users to the Arts Pavilion. It now shows past exhibitions that have taken place and the booking sheet so that prospective art directors can plan their shows. The sites are www.mile-end-art.co.uk; and www.mile-end-art-pavilion.co.uk.

1.4.5 The repeat exhibitions are proof that the Art Pavilion is beginning to establish itself on the Art Map in London. In 2013 The Arts Pavilion was regarded as being in the top five best arts gallery in London.

1.5 Review of Play Achievement

1.5.1 Another busy year filled with play and community events. The Summer Festival Jubilee was celebrated in the park as a family fun day event in the Children's garden and attracted thousands of participants. The busy children's event schedule throughout the year included the annual Teeny Weeny Halloween, Easter Egg Hunt, Cardboard City, Santa's Grotto and many more.

1.5.2 Funding from Section 106 was secured to enhance the play features within the Children's playground. Additional play equipment's were ordered including an accessible see-saw, and a large swing. A storage container was also purchased to store additional play equipment's, together with additional plantations in the playground.

1.5.3 Internal works have been carried out inside the Children's Pavilion. This included creating separate internal storage facilities for the various user group, upgrade to the old kitchen, and new new staff shower.

1.5.4 Additional raised planters have been created in Children's Growing Zone with corporate volunteers to add to the existing planters created over the years through time we hope to have a stretch of planters along the Growing Zone green are which will be maintained by volunteers and local community groups with the help of the Rangers. Various vegetarian food activities have been delivered in the park during 2013.

1.5.5 The Senior Community Park Rangers has trained to provide forest schools for local children but in conjunction with local schools. For children in such an urbanised area the presence of a few trees offers them an experience otherwise denied to them.

1.5.6 A new Service Level Agreement with Mile End Children's Centre means the building is used more during the morning and afternoon, attracting more targeted groups of children and family.

1.5.7 More joint events in collaboration with local third sector organizations, statutory sectors and Council Services took place in 2013 including successful collaborations with Idea Stores and sports sections which broadened the range of experience for children visiting the park

Mission Statement

2.1 To make Mile End Park a centre of excellence, an exemplar amongst public parks that pioneers the way parks are perceived in the 21st century.

Vision

3.1 To give each section of the park a strong sense of place that is immediately obvious to the casual park visitor. To unite the various sections of the park so that areas physically separated by road or rail are easily identified as part of the park and that users enjoy the park as a linear park in its entirety and do not restrict themselves to sections of the park.

Recent History

4.1 The park was constructed from several pieces of land and was originally designed to become an almost continuous green strip less than half a mile from Victoria Park in the north and reaching to within 0.75 mile of Limehouse in the south.

4.2 Although the park doesn't quite reach Limehouse and there remain two roads that divide the park, the presence of the towpath along the Regents canal allows for an unbroken walk through the park.

4.3 The concept of the park for the 21st century sprang from the local community following a "planning for real" weekend where they were invited to meet and discuss what they would like to see in the park. In September 1995, 300 people attended the Mile End Park planning weekend in a local school adjacent to the park. Participants were given blank copies of the park out line and the broader strategic plan and asked to write down what they would like to see in their park and to list their priorities for the site.

4.4 A park for the 21st century was about to spring up from true consultation and only when the results of that consultation had been assessed would the professionals be brought in to make the park a reality.

4.5 As with any scheme of this scale not every element could be completed on time and to budget, nor did all the assumptions made for a revenue stream occur exactly as predicted.

4.6 This resulted in compromises being made and some elements remaining to be completed. Almost all of these elements have been successfully implemented with the exception of the proposed completion of the solar canopy above the go kart track.

4.7 Like anything organic the park continues to develop, but it has at its core the dreams and aspirations of the people drawn from the local community who made their views known at that first consultation meeting.

Historical Context

5.1 Mile End Green was the place that Watt Tyler, Leader of the Peasant Army met King Richard II and his assembled army in 1381.

5.2 In 1820-1838 it was the site of a famous pleasure garden or tea garden, known as the New Globe Inn Gardens. These pleasure gardens were slightly less fashionable than Vauxhall and Raneleigh Gardens, but at sixpence entry fee, still considering itself genteel. The New Globe Inn can still be seen today with its characteristic globe on the roof.

5.3 In 1936, following the death of King George V, a charity was formed to improve playing fields and recreation grounds across the country in commemoration of the late King. Mile End Park received the single largest grant of any park in the country and the commemorative plaques can be seen embedded in the gate piers adjacent to Copperfield Road.

5.4 In 1944 Lord Abercrombie developed the most ambitious plan for the establishment of parks in London. Amongst the proposals was the establishment of parkland linking Victoria Park to Limehouse effectively elongating Mile End Park.

5.5 The first V2 bomb dropped on the railway bridge adjacent to Mile End Park in 1944 and the blitz continued to devastate the East End. Such devastation made possible the potential implementation of the Abercrombie Plan.

5.6 In 1950 the park was created out of the devastation of the Second World War with the beginning of compulsory purchasing of houses and factories.

5.7 In the 1980s the GLC (Greater London Council), who managed the original park, resurrected the plans first formulated by Patrick Abercrombie MP and indeed drew up extensive plans. The GLC were abolished by central Government before the plans could be fully implemented.

5.8 In 1994 the newly established Millennium Commission sought suitable projects to mark the new millennium. The London Borough of Tower Hamlets joined forces with the Environment Trust and the East London Business Alliance to form the Mile End Park Partnership.

5.9 In January 1998, building work began on the new Mile End Park and by September the first major construction begins with work on the Terrace Garden and the centrepiece of the scheme "the Green Bridge" that would span the busy Mile End Road.

5.10 Work on the Green Bridge was completed by July 1999, followed in October by the start of phase two: the construction of the Art Park and the Ecology Park.

5.11 Late 2001 saw the construction of phase three the Children's Park and the Children's Pavilion. The Children's Park became fully operational in 2003.

5.12 A new bridge was opened on October 20th 2009 effectively joining a piece of land on the other side of the canal to Mile End Park and encouraging wider use of the park to a greater number of people. This was the final piece of outstanding work that was promised to the Millennium Commission.

The Park Deconstructed

6.0.1 The park can be divided into six segments and whilst these have their own individual characteristics they should blend seamlessly to make the whole park. This is made more difficult by the fact that the park is physically bisected by two busy roads and two railway lines and the design of the park has intentionally incorporated this to make a truly urban park of the 21st century. Any amendments to the design must seek to preserve this urban realism rather than attempt to screen it out. The sight of a train crossing the park has an aesthetic quality equal to that of any other landscape feature.

6.0.2 The main six segments of the park beginning at the northern most part are: the Play Arena, the Ecology Park, the Art Park, the Green Bridge and Terrace Garden, the Adventure Park, the Children's Park. In addition to these six segments there are slightly less distinctly defined areas of the park that inter-link the main segments and act as transitional areas for the park visitor. Such areas remain clearly intrinsic to the entire park and may have individually strong features within them.

6.1.0 The Activity Arena

6.1.1 Concept

This area is designed to allow outdoor entertainment to take place, particularly, though not exclusively, for children. It allows a pleasant setting for a range of outdoor activities from small fairs to the St Barnabas Church Community Fete. It is sufficiently near to a good selection of food outlets and public transport (bus). Its' high visibility from the road makes it an attractive venue from the point of view of potential operators. In 2010 it became a venue for Zippo's Circus income form which helped to generate income for the park.



The Adizone, Wennington Green

6.1.2 Description

The arena comprises a large grass area with some mounding to form a partial amphitheatre. Within the mounding is an outdoor gym (the Adizone) which is brightly coloured and can easily be seen from the road. Fencing defines the area on three sides and the Regent's Canal marks the other boundary. Trees have been planted around the periphery, but the area is easily visible from the road. In one corner the first liminal play space has been established (see the Play Strategy for description) There are two types of seating in this area, the modern steel design and a more natural basic wooden type that appears away from the main areas of paths.

A small playground exists across the small road that divides the grass area from the Bow Wharf development. The play area is designed for the 1 to 8 year old age group.

The site is dominated by the Adizone which has transformed this section of the park bringing in a whole new all year round audience to the park and creating a focus for this section of the park and attracting people from other sections of the park.

This section of the park also had an addition to its architecture and colour. The installation of the arts seats is located adjacent to the Liminal Space 1 and the Adizone. The new seat functions as children's play piece and is designed by artists and commissioned by the family and friends of a local resident to commemorate her life.

6.1.3 Work outstanding - None

6.2.0 The Ecology Park and Ecology Pavilion

6.2.1 Concept

To offer the casual visitor an insight into ecology and bio diversity that may lead to seeking out further information on the subject elsewhere in the park. Although these themes are present throughout the park, it is intended for this area to be the core focus area and to build on levels of knowledge and involvement.

6.2.2 Description

The area has three ponds that have already attracted damselfly and dragon flies, both new species to the park. The ponds are designed to give the impression of being linked to the canal, but they are in fact fed from a borehole. The area is dominated by a wind turbine that powers the pump circulating water in the lakes and is an example of wind energy in action. The earth insulated Ecology Pavilion that is largely used as a public building for the display of exhibitions, conferences, and seminars and for private hire, which act as a valuable source of revenue. There are typical water marginals planted in the ponds and some of the beds in this area have been planted with plants not necessarily typical of British natives. An outdoor classroom and a damp scrape (an area of soil scraped to leave a lower area that retains moisture for longer so providing a new habitat)



The Ecology Park

6.2.3 Current Position

Work continues here and elsewhere in the park to undertake some trapping of invertebrates to compare the findings with the previous year, in order to monitor the success of the ecology strategy.

An additional tool storage unit has been installed in addition to a current unit in order to free up space in the Ecology Pavilion, and also to store more materials.

6.2.4 Work Programmed

In order to increase interest and make the pavilion more appealing we will be installing a new front signage, display flower beds in front of the pavilion, and also increase security by improving lighting at the entrance. We also hope to purchase new chairs and tables to offer to hirers.

6.2.5 Work outstanding - None

6.3.0 The Art Park

6.3.1 Concept

To provide a complementary backdrop for art in all its many forms both in the exterior and interior of the park. This would range from temporary to permanent pieces of sculpture and to a range of exhibitions held in the earth insulated Art Pavilion.

6.3.2 Description

A large pond with cascades, islands, bridges and an arts pavilion dominate the Arts Park. Further south is a partially planted small hill known as the Art Mound, affording views across the park. A set of giant grass steps provides a more energetic method of reaching the top, but a path around the mound allows for a far gentler ascent. There are some beds of imaginative planting that afford interest throughout the year to the front of the Pavilion. To the rear of the Art Pavilion the globular line of willows have been removed and replaced with a series of new beds planted to provide all year round interest. This is a phased development with new beds being dug out during the summer and planted the following winter. Plants from the original two phases will be used to populate future beds so saving money. Interestingly the new design has already encouraged park visitors to walk between the beds to obtain a better view.



The Arts Park

6.3.3 Current Position

The harsh concrete edges of the Art Lake have been covered with rolled coir matting impregnated with wild marginal plant seed. This work took place in February 2011. The gabions that have been vandalised over the years have been restored.

A new beehive has been installed within the meadow area off Clinton Road. This was as a result of joint work with the LBTH Youth Offending Team in order to enhance their ecology curriculum when working with young people, and also to contribute towards the biodiversity of the park.

A further 10 natural seating area has been installed within the green area behind the lake. These have been installed by rolling groups of corporate volunteers.

The woodland walk area has been extended in Chris's Wood area, with additional habitat piles being created.

6.3.4 Work Programmed

Internal works within the Arts Pavilion include developing a new registrar's office. The Pavilion recently acquired license to hold weddings and registrations and in order to increase usage this Pavilion will also be available to hire for weddings as well as for art's shows. A storage unit will also be created to store arts materials and general building furniture, together with providing an allocate kitchen area within the pavilion. In addition chairs and tables will also be purchased and available for hire for weddings, arts exhibitions and also new kitchen amenities.

6.3.5 Work outstanding

To plant within the Art Park beds with outstanding gaps.

6.3.6 Installation of new hanging rail system

6.3.7 Improvement within the lavatories including new floors, tiling's, sinks, urinals and toilets.

6.3.8 Improve security within the Arts Pavilion. Currently exploring avenues for CCTV systems and improved outdoor front entrance lighting.

6.4.0 The Green Bridge and Terrace Garden

6.4.1 Concept

The Green Bridge is the iconic statement of the park, making it clear that traffic filled roads will have no dominion over a park of the 21st century. It unites the two halves of the park and allows one to walk through the park oblivious to the four lanes of traffic below on the busy Mile End Road. The Bridge also unites the two communities of Bow and Poplar, as they are no longer physically separated by the busy road and are free to wander through the length of the park.

The Terrace Garden is designed for year-round interest and was laid out with older people in mind. Each level can be reached by a sloped access and there are many seats from which to rest and watch the fountain play in the more formal water feature. The aesthetic interest of this area makes it a popular meeting place for both young and old alike and in many ways it is the centre piece of the park.

6.4.2 Description

The Green Bridge, designed by Piers Gough, spans the road and can be easily identified from Mile End Tube station. The original planting scheme was to plant Silver Birch and Black Pines set in grass with a footpath and a cycle path running through the centre. The trees are effectively planted in large containers that are plunged into the polystyrene that fill the bridge and as such must be treated as containerized plants. However there are structural problems which lead to the water from the planting containers dripping into the shops directly beneath.

The Terrace Garden is a series of terraces leading down from the bridge on the southern side to the pool and fountain. Each terrace is planted to maintain year-round interest and is supplied with the formal steel seats. The water feature has a fountain at one end and five burbling jets at the other. Water travels from one end to the other down a cascade, so providing the noise of running water in the area. The far side of the feature is less formal and reeds and other natural aquatics have been allowed to establish.



The Terrace Garden

6.4.3 Current Position

The area that leads to the Terrace Garden from the Mile End Road has been transformed as views have now been opened up and new entrance points and resting areas created to draw people into the park.

6.4.3.1. Whips of *Alnus incana*, *Ulex europeas* and *Betula* were planted thickly and will be thinned as appropriate as they grow governed by the degree of rainfall and the depth of soil. The first growing season coincided with the wettest summer on record which aided the establishment and growth of the whips. Despite this the *Alnus* had very poor establishment and these will be replanted as it is clear that the problem does not rest with the ground conditions

6.4.3.2 Fencing off the viewing platform has deterred antisocial behaviour which was a problem of the original bridge design. These areas are becoming undisturbed habitats for wildlife supplementing the aims of the ecology forum.

6.4.3.6 Five Play pieces have been installed on the approaches to the bridge. As part of the strategy to promote play throughout the length of the park with pieces that will form play cues to children rather than the usual formal play equipment.

6.4.3.7 The removal of the central reservation from the section of the bridge itself has enhanced the visual aspect of the Green Bridge and this will continue to improve as the tree seedlings continue to grow.

6.4.3.8 A number of natural benches have been installed on both sections of the path on top of the bridge. These were conducted by rolling groups of corporate volunteers. The intention of these seats is to allow users to rest, in particular the elderly users or to enjoy to the views.

6.4.4 Work Programmed

6.4.4.1 Work is planned on the Green Bridge Shops in order to prevent water penetration. This is extensive work and final costs are to be finalized, however the shops provide a significant stream of income to the park therefore is a necessary investment.

6.4.4.2 We intend to install more natural seating's along the pathway on top of the bridge.

6.4.4.3 An empty unit which was once the original security office and since then used as storage over the year has been advertised for tender and will be occupied by a local business.

6.4.5 Work Outstanding

6.4.5.1 The car park just outside the empty unit above has been an uncontrolled area with continuous unauthorized parking. Due to various restrictions and funding enforcement has been limited from the parks team. In addressing this we aim to transfer this car park into a pay and display zone which will also help with income generation.

6. Adventure Park

6.6.1 Concept

The Adventure Park was conceived following park research that concluded that there was an under provision of play for 11 year-olds and older children in parks across the country. MORI (Market & Opinion Research International) poll findings indicate that residents are very concerned about a lack of things for teenagers to do. Tower Hamlets has a population of which 25% are under 16 years old.

The area is designed to appeal to those between the age of 11 and 17. It takes as its' starting point that it is impossible to provide a single piece of equipment that would be of interest to both ends of this age range so one item has been provided as a transitional piece in so much as it is a bigger more challenging version of that in the Children's Play Park for the under 11s. From this the younger children can observe the etiquette of this play space and gain confidence before venturing onto the less familiar equipment. The other basis of the design is that most young people in this age category tend to want places that they can sit and chat, away from adults. This is particularly important in areas of high overcrowding and a lack of open space. Therefore most of the equipment can serve this purpose as well as the one for which it was designed.



The Skate Park



The BMX track

6.6.2 Description

6.6.2.1 The Urban Adventure Base (UAB) building is a large two floored sea container that has been adapted to make office accommodation to house personal advisers, and UAB staff interview rooms and a chill-out space for more staff and users. At the front of the office is an area allowing internet access to the young people and freely available information. The ranges of activities are purely outdoor recreation based and the sessions delivered are also accredited and curriculum based.

6.6.2.2 Adjacent to the UAB unit there is the newly developed Short Breaks Gym, which provides various sports and health related exercise and training sessions in particular for young people with special educational needs and disability.

Both projects (UAB and Short Breaks Gym) and managed under the Council's Youth and Community Services.

6.6.2.3 The Adventure Park is located behind the Short Breaks Gym building incorporating more challenging play and areas to simply "hang with your mates". The equipment includes a transitional piece that allows children to become comfortable in an area at which they are very much the newcomer and most of the equipment is unfamiliar. The transitional piece is a larger, more challenging version of what is in the Children's Play Park. In addition to the regular equipment the site boasts a climbing rock, a multi use games area and two teen shelters.

6.6.2.4 Since the autumn of 2006 a youth outreach centre known as the Urban Adventure Base has operated in this area of the park. It is run and funded by Children's Services who operate both inside and outside the park and even the adjacent canal.

6.6.2.5 Linked to the provision for youth is the Skateboard Park, formerly the Extreme Sports area but named by the users as the Skateboard Park and so that is the name we will give it despite it's name we intend to continue to allow other wheeled sports to use the area.

A full description of the site appears in the Interlinking Elements section later in this document 6.9.0.

6.6.2.6 Together with the Urban Adventure base we have now developed an outdoor BMX track. Like the Skateboard Park this is an extreme sport and will attract more young people to the park. The BMX track was completed in October 2012

6.7.0 The Sports Park

6.7.1 Concept

To provide a wide range of sporting activities within the park, that builds on the already successful athletic track and all-weather sports pitch. The activities should be easily accessible to a wide cross section of the community and have the promotion of healthy lifestyles as a core objective.

Note: although these are based in the park they are run separately from the park by the sports development section of the London Borough of Tower Hamlets.



Bird's eye view of the Sports Stadium and GLL Leisure Centre

6.7.2 Description

The area contains two all-weather surface sports pitches, a full size athletics track and stadium with changing room complex. These facilities are widely used both by local athletes, local schools and the local community. The £15.3 million leisure centre opened in 2006 and incorporates two swimming pools, two gyms, a steam room, a fitness studios, sauna and physiotherapy and massage surgeries together with 10 outdoor football pitches and associated changing facilities.



Mile End Sports Stadium

6.7.3 Current Position

The Sports Park has been a great success and is well used by the local community. This has been helped by the policies of the previous government and it is unclear how the new Coalition's Government policies will impact on this if at all.

6.7.4 Work Programmed

The construction of an access shaft for the new Cross Rail development will remove one pitch and so work is being programmed to build a replacement prior to it being taken out of commission.

6.7.5 Work outstanding - None

6.8.0 The Children's Play Park

6.8.1 Concept

To provide a range of child-based activities for children aged between 1 and 11 years of age and to offer a range of support for the parents and carers of children in this age range.



Bird's eye view of the children's playground during a summer event in 2013

6.8.2 Description

A large play area filled with opportunity for challenging play to include all of the stated age ranges. The outdoor area comprises a number of diverse pieces of fixed play equipment, a water jet feature, an area for imaginative play based around a make believe dry river bed, a small climbing wall and a small ruined castle. In addition there is an area for ball games. Elsewhere is an area of grass, which is managed as wild meadow for younger children to gain a first understanding of nature. A refreshment kiosk and toilets can also be found in the play area.

More recent additions include outside musical instruments, an outdoor theatre and a range of different swing types and a fire pit where children can learn about fire under the supervision of the rangers or play staff. The Growing Zone is an area with six raised beds, a cold frame and a compost bin. It is used to offer the children the experience of growing fruit and vegetables.



Sandpit in the children's playground

6.8.2.1 The Play Pavilion building is fully equipped with a soft play area, toilets, and a kitchen, office and storage space and provides a large indoor play space. The groups using the centre share a range of equipment, but they may also bring their own age or ability appropriate equipment to enhance their sessions. Two offices are available. One office is to allow play leaders somewhere to hold confidential meetings or store files. The location of the Ranger's office in the Children's Park means that the children get to see the Rangers on a daily basis in a positive light and will hopefully build a relationship with them when they come to the park unaccompanied, as older children. In addition a fantasy room known as the Narnia room and accessed by a wardrobe with the back removed offers a fantasy space to children and is used for story telling. A fully operational kitchen, known as Beth's Kitchen, allows for both healthy eating activities and for cooking sessions so that children get the opportunity to understand how food is prepared. It is linked with the growing zone outdoor which produces fruit and vegetables.

6.8.3 Current Position

The presence of a play team added hugely to the play offer particularly for local children. Unfortunately when the funding for ran out we had to rethink the play offer. With the increased number of rangers following a restructure it has been possible to sustain the number of community and children events within the park, and also continue to work in partnership with local user groups sharing resources and materials.

6.8.4 The current Play Team is now comprised of the senior Play Coordinator and one part time play worker funded entirely from the play budget.

The Children's Play Pavilion allows a base for an under 5 Stay and Play facility, an after-school club and a range of play sessions in addition to the school holiday play programmes. Sure Start, the under-5s provider, Toy House Library and a Somalian Play group, Al Huda, also run regular sessions from the children's Play Pavilion.

6.8.4.1 A new shipping container has been installed for extra storage to house children's outdoor play equipment's.

6.8.4.2 The old Narnia room which was used for story telling has now been converted into a park office for the parks team.

6.8.5 Work Programmed

6.8.5.1 To encourage bio-diversity within the park and deliver more ecology based children's programme, an amphibian pond has been installed.

6.8.5.2 More raised beds have been built within the children's gardening area in order to deliver more activities relative to horticulture.

6.8.6 Work outstanding - None

6.9.0 Interlinking Elements

6.9.1 Within Mile End Park there are several spaces that interconnect the themed areas and whilst not necessarily featuring so prominently on plans or in accompanying text, they are no less clearly defined and make a significant contribution to the overall success of the park. Sometimes these are fully developed and with a clear purpose and at other times they are flexible spaces without any defined role.

6.9.2 “Fishy places” was a piece of artwork designed by local children to interact with the local anglers that fish the canal. It is situated within the park at the point that the canal flows under Roman Road at the entrance to the Ecology Park.

6.9.3 The Meath Bridge dominates the area in front of the climbing wall. The bridge crosses the canal connecting the park to Meath Gardens. This was a requirement of the Millennium Commission and was a part of the original scheme. The bridge opened on October 20th 2009 and has proved very popular with people on the Meath Garden’s side of the canal continues to bring a new audience into Mile End Park.

6.9.4 The Climbing Wall is privately owned and is situated adjacent to the canal and in the area that separates the Ecology Park from the Art Park the building is occupied on a peppercorn rent from the park but remains totally independent. However, the operators act as partners in the park and offer various activities to park users including the play schemes and the provision of demonstrations as part of larger-scale park events.

6.9.5 Behind the Climbing Wall premises, and bound on its furthest side by Grove Road, is an area of open grass. This space known locally as Haverfield Green is used for informal games of football and as a space that can be used for larger Park Events e.g. Park Life that is organised by the Friends of Mile End Park.

6.9.6 Liminal Play Spaces have been introduced to two areas of scrub on the periphery of the park. Liminal 2 is sited at the southern perimeter of Haverfield Green adjacent to the railway line. The liminal Play space takes over a natural area e.g. of scrub and inserts a series of play cues i.e. not traditional play equipment so that children can happen upon it and utilise it directed only by their imagination. Examples of the play cues used include a gate that leads to nowhere, an arch of no apparent purpose, a mirrored corridor and a polished chrome dome reflecting the sky or the child’s face.

6.9.7 The Older person’s garden is sited at the southern end of Clinton Road and was a remnant of an older park design. It was an area of traditional shrubs and grass fenced off from public access and so served no purpose to the park. It has been transformed into an older person’s garden with raised beds and a garden shed which allows older people who are mostly living in flats without a garden somewhere to practice growing.

6.9.8 Shops and Restaurants are built into the Green Bridge and the rent derived from these units is part of the revenue stream for the park. The units were leased as empty shells and in return for six months free rental, the tenants were expected to fit out the units using high quality design and materials. The units on the north side comprise an estate agent, a coffee bar and a supermarket, whilst on the south side four restaurants offer cuisines to a wide range of visitors.

6.9.9 The South Park links the Terrace Garden area to the Adventure Park and is an area of short grass and trees. Like the area behind the climbing wall, open areas of grass are

useful to balance the more developed areas of the park. However, there are some important areas of scrub and these will be managed in the interests of bio diversity to form mixed woodland areas. Also in this area is a Play Pod which offers impromptu play whenever opened. It contains a selection of loose parts (e.g. cardboard, material and anything that can be used in imaginative play. It is to be operated by the Tower Project as a placement for their clients who have special physical or learning needs and so has a symbiosis with the inclusivity that is the ethos of the park.

6.9.10 The Borehole, by its nature, cannot be seen, but the effect on the park cannot be underestimated. The park has a licence to remove water directly from the water table beneath the park. Water from the borehole is pumped into the lake and also feeds the automatic irrigation system to water the trees on the Green Bridge and along the spinal path. The licence for extracting water from the bore hole expired in March 2013 and so a new application has been made and the outcome is due to be announced.

6.9.11 At the north end of Copperfield Road on a space that had no obvious purpose even for informal recreation a Dog Gym or Dog Agility course has been introduced. A local volunteer who is an expert at dog training offers classes once a month and these are proving very popular with local dog owners.

6.9.12 The Railway Arches are situated beneath a busy mainline railway and act as a visual as well as physical barrier. They had acted as a blot on the park landscape as they were filled with examples of “dirty industry”, for example garages and breakers yards etc. A policy decision was taken by the London Borough of Tower Hamlets to lease the arches on a 99-year lease from Railtrack and to re-let them to selected sub-tenants. This has had the effect of cleaning up an untidy area and the new tenants include the Animal Wardens’ operational headquarters with an animal operating theatre and holding pens as well as Venture, “Concordia” which boasts a recording studio and mixing suite and is used by young people from the Somalian, Bangladeshi and English communities. In addition, English as a Second Language and IT skills are taught in classrooms within the centre.

6.9.13 One arch has walls housing official graffiti boards, where local artists are able to design graffiti art and which fellow artists will wipe out in time to allow new art to be displayed. This central archway leads through to the go-karts and Skateboard Park, the latter offering more graffiti boards. The central arch will remain as a linking space between the 5-a-side football facilities and the path leading to the children’s Play Park The two remaining arches will be used to house a half pipe to allow skateboarding in wet weather and a skateboard outlet which will offer supervision of the site and youth chill out area/cafe.

Although the arches are based in the park there is no financial benefit to the park, as the arches are leased at the market valuation and sub-let on the same terms. However, the tenants of the arches see themselves as partners in the park and meet regularly with the Head of Parks.

6.9.14 The Skateboard Park has a polished concrete floor and is designed to provide an experience for all abilities from the absolute beginner to the advanced practitioner of the sport. It attracts a wide variety of age groups and although the predominant use is skateboarding it is also used for BMX and in line skating. The area has graffiti boards on two sides as this activity is very much aligned to skateboarding.

6.9.15 Revolution Go-Karting is another tenant of the park and rental from the track is another important source of revenue to the park. The karts were the first electric go karts in London and in keeping with the environmental policy of the park there are no exhaust fumes and little noise unlike their petrol/diesel equivalent. The next phase of development is to build a solar panel roof that will provide electricity to the karts. The operator will fund this and planning permission has already been obtained. The operator continues to be confident that this will go ahead despite the economic climate.

6.9.16 Kirk's Place is a piece of grass that flanks the Regent's Canal and visually at least it does not currently connect with the park. Linking the Sport Park via the brick gate piered entrance/exit, (which still has the plaques commemorating King George V Playing Fields) and crossing the busy Rhodeswell Road accesses the site. A listed vented brick sewer chimney dominates the area, belonging to Thames Water whilst the British Waterways Board is responsible for the canal and towpath. The area has an open aspect and as well as the 50,000 daffodils it has been sown with a wild flower mix which makes this a spectacular part of the park in the spring. It is also the site of the Bombardier beetle, only the second in the country, although this could not be confirmed in 2012.

6.9.17 The Spinal Path is the main path that travels north/ south through the centre of the park. It is divided into two sections so as to separate cyclists and pedestrians and is constructed of two surfacing materials a tarmac and a hot tar resin bound surface. A narrow linear shrub border containing mixed shrub and tree planting that is protected by temporary fencing separates the two paths. Some of the shrub planting has failed to establish and the fencing continues to be broken by pedestrian traffic seeking out desire lines. The cycle path has periodically placed rumble strips to slow down cyclists as they traverse the park in order to protect the health and safety of all park users. An application for funding in the region of £60,000 was successful in 2013 and in order to remove the top soil and replant the area. We hope to complete this work within 2014.

Interpretation

7.1 In this instance interpretation refers to a method by which park visitors and possibly even non-users can relate to the park. For the purpose of this document it has been separated from signage, which appears in 8.0.

7.2 Interpretative panels have been interspersed throughout the park to allow the casual visitor to explore the full potential of the site. The panels inform and explain what is to be seen in the park and how the park contributes to the local history of both the area and its communities. The panels, whilst based in the park also describe the local heritage of a wider geographic area. Heritage signs have also been introduced on a limited basis to give a flavour of the heritage of the site. These include information on the original Pleasure Garden, the King George V Playing Fields and the local history of the area.

7.3 The natural heritage as witnessed in the park forms an integral aspect of the interpretation strategy. The panels cover basic information about bio diversity and local information about flora and fauna to look out for in the park. Also included on the panels are more educational facts that link an aspect of the park to the wider issue and so enhancing a park visit, for example, the connection of global warming to the earlier hatching of butterflies and the use of early spring bulbs as a pollen source.

7.4 More transient yet more immediate signs are erected to inform of more imminent works. The scale of the works dictates how long before an activity commenced that the sign are erected. Similar signs inform visitors of activities in the park, for example, holiday play schemes and up-and-coming events. In all cases these signs have a limited life and are removed promptly.

7.5 The Internet is a popular source of information and therefore it is imperative that information available in the park is also available to a web audience and the parks website offers up to date information as well as this management plan. In addition the park has launched Facebook site and a Twitter account. The Facebook site is the most popular social networking site under the umbrella of the local authority. The web site also hosts the "Walk a Mile in Mile End Park" (see 8.6) cartoon and maps, and the downloadable audio tour of the park voiced by patron Joanna Lumley.

7.6 Other panels offer information on healthy walks to be undertaken in the park. These are headed Walk a Mile in Mile End Park and are accompanied by swipe points for the electronic measured mile and seek to encourage more physical activity in the park. It is believed that this is the first electronic measured mile in a public park anywhere in the world. These panels also offer a map for the casual park user to orientate themselves.

Signage

8.1 In the park the cruciform monoliths (X signs) appear at most entrances. The signs are unique and are an immediate signifier that this is an entrance/exit point at Mile End Park. Their unusual design indicates that this is not a traditional park and each sign has cut out lettering preventing defacing, and indicates the direction of main features. The cruciform monoliths have been specially treated in the paint mix to allow for the easy removal of graffiti without recourse to special chemicals or a sacrificial layer treatment. A slogan on the sign welcomes new visitors whilst asking them to be kind to the park and other park visitors. Directional signs offer directions within the park.

8.2 The park recently secured funding for 8-10 orientation signs to be installed across the stretch of the park. The signs have been identified as part of Green Flag judging and also by local residents to help users navigate across the park together with promoting the various services and amenities within the park. The designs have been completed and we intend to have these installed by middle of 2014.

Forums

9.1 The establishment of a series of forums consisting of local experts and enthusiasts to consider policy and direction around a specific theme began in February 2004 with the Ecology Forum. The purpose of the Forum is to develop expert opinion on a specific topic and to tap into a wealth of expertise that is freely available.

9.2 The participants of the Forum are able to influence policy in their local park and the quality of debate and decision is far superior to that achieved by a single generalist. The experience, knowledge and networks that each forum can draw upon ensure quality decisions and a shared ownership of the policy.

9.3 The Ecology Forum has a botanist, a generalist, a spider expert, and an ornithologist, together with experts on dragon and damselfly and bats. The Forum meets every six to eight weeks; its remit covers recording and interpretation as well as directing the ecology policy for the park. The Ecology strategy for the park, is updated annually and appears as a separate document but under the scope of this management plan.

9.4 The Play Forum considers the play provision in the park for 1-11 year-olds and how this can be developed and extended. The updated Play Policy also appears as a separate document but under the scope of this management plan.

9.5 The Art Forum has developed and is now almost running the Art Pavilion Exhibition programme and the success is entirely down to them..

Community Involvement

10.1 Perhaps the biggest legacy of this particular millennium project is the continuing community engagement and the relationship which has been built between the park and local people.

10.2 The public can access information about the park and its users from the website and via social networks such as Facebook and Twitter. There is also a regular column in the local paper East End Life which has a circulation of 90,000 Tower Hamlets residents.

10.3 Monitoring of feedback is carried out via GreenStat and is available to download on line. In addition East End Life regularly promotes the use of GreenStat to feedback their views on the park. Throughout the year face to face GreenStat surveys are carried out at major park events. In addition the Play offer has been monitored independently as part of the condition of the grants awarded.

10.4 Involvement occurs on very many levels from the three forums to the individual volunteering to provide cookery activities for the children or dog obedience classes. Once a month local volunteers help with tasks in the park. The most obvious example of local engagement occurs at the Halloween event where volunteers from the community give up their Saturday evening to dress up and put on a show. The true breakthrough has been the groups within the community that have written their own scripts, designed their own costumes and entertain other members of their community.

10.5 The Forums are drawn from community groups, local residents and third sector organization and these set objectives for the park which are all included in the plans. The park has built its reputation in growing community organically, i.e. responding immediately as opportunities arise to work with new extended groups. Currently there are no groups underrepresented in the park and for these reasons there are no requirements to formally plan additional engagement. Mile End Park in 2012 was used as an example of good practice on community involvement.

10.6 The key outcome of the community involvement process when the park was being constructed was the "Friends of Mile End Park". This is an active group who feed into decision-making about the park through work with the Park Director. The relationship between the Friends and the Director is an important one and one that both sides seek to sustain and improve. In 2010 the Friends took over what had previously been a jointly run event and ran it entirely independently of the park including the raising of the funding to support the event. The event, "Park Life" was deemed a great success and an example of how the Friends work with and on behalf of the park. This success was reported again in 2013.

10.7 In addition, practical activities are organised to improve the park. In 2012 the park benefited from the work of more than 1200 corporate and community volunteers who carried out planting, pruning, the painting out of graffiti and wood staining throughout the park. It is hoped that these volunteers will form a bond with the park and continue to champion the various projects. In addition to their enthusiasm the volunteers also made a donation in excess of £30,000

10.7.1 There are three distinct types of volunteer who work in the park, and these are best described as:

- a) The corporate volunteer mostly drawn from the institutions in Canary Wharf and the City. These tend to offer one day with a team of volunteers tackling a single project.
- b) The organised volunteer, often school groups who will attach themselves to a particular on going project under the guidance of another outreach programme.
- c) The casual volunteer who may be a child or an adult and who comes regularly to the park to take part in an activity organised by park staff. These take place on the last Sunday of the month.

10.7.2 There is a range of work and projects that can be found all year round. However, it is important to ensure that the project does not exceed the capacity of the volunteer. Work should also be of an interesting and diverse nature.

10.7.3 Site visits take place with the team leader of corporate volunteer teams prior to the commencement of the activity and all risk assessments are carried out.

Health and Safety

11.1 The London Borough of Tower Hamlets Corporate Health and Safety Policies apply in all parks. The policies are available on request.

11.2 The Borough is committed to promoting the Health, Safety and Welfare of all employees and of the public who come into contact with its premises and services. It is the policy of the Directorate to develop a positive Health and Safety culture throughout the organisation because we believe that good safety is good business. This Health and Safety Policy intends to set the ground rules through which continuous improvement of the standards of Health, Safety and Welfare of all employees and clients can be achieved. The safety policies are in accordance with section 2(3) of the Health and Safety at Work etc. Act 1974 and are revised on a regular basis. Their implementation is checked regularly by the Directorate's H&S officer.

11.3 The Council is highly committed to promoting high standards in health safety and welfare towards its staff, volunteers and users. We strive to ensure the safety of our users is paramount at all our sites, enabling visitors to enjoy a safe and pleasurable experience within the Park and its facilities.

11.4 Risk Assessments for the park are carried out annually and in the Children's play area every six months. These are checked by the Head of Parks who also takes responsibility for ensuring that any resulting actions are carried out to the required timescales. Monitoring the result of the actions taken also takes place to ensure their timeliness and appropriateness. Event specific risk assessments are created prior to the event taking place. A generic risk assessment is used for the volunteer sessions but the starting position is one of volunteers not been allowed to use chemicals, power tools or work at heights. A tool talk and a safety talk precede each session.

11.5 Items of equipment in the play area are visually inspected daily by the Rangers, in addition to monthly inspection checks carried out by the ranger qualified to do so. The Royal Society for the Prevention of Accidents (ROSPA) provides six monthly independent assessments.

11.6 The Parks Development Officer undertakes a visual inspection of the park at least once a week as part of walking the job, which, although unrecorded, results in immediate action.

11.7 All Fountains Support Services Ltd' staff have induction and basic H&S training. Risk assessments are done and staff must meet the resulting codes of practice. All cleansing staff have manual handling training. Staff have additional training in accordance with their duties and the tools / machinery they are required to use, such as first aid, chainsaw, RoSPA playground checking training and so on. This methodology will continue when the grounds maintenance is brought in house and run directly by the local authority on April 1st.

Security and the Community Rangers

12.1 The Mile End Park Community Ranger joined the park in May 2004 and were originally a team of four, however as an outcome of the re-structure there are now six rangers who cover all aspects of the park work over seven days

12.2 More recent thinking has led to a park design geared towards people enjoying using the park, not merely viewing the aesthetic quality of the grass. Nowhere is this more obvious than in Mile End Park and it is here more than anywhere else that the Community Ranger has evolved to meet the needs of the 21st century.

12.3 The modern community ranger is as diverse as the park users and their equally diverse requirements. The community ranger of the 21st Century is a hybrid of many of the previous incarnations of the Park keeper, Park Warden and Park Ranger.

12.4 In Mile End Park the Rangers are based front of house, the most visible and fully integrated aspect of the park with a mission to delight the customer. They are highly trained, highly motivated and have a clear view of how this will be offered opportunities for career advancement. The traditional view that the only advancement for Park keepers was that of a relatively minor supervisory role has been transformed, as this new breed of Ranger is equipped to advance in a whole range of different career choices. The Rangers are where possible recruited from the local area.

12.5.1 The Rangers are responsible for the safety and enjoyment of the park users and will encourage the park bylaws to be up held. The Ranger staff wear highly visible uniforms allowing easy identification from a distance. Park personnel are the point at which members of the public can voice their concerns, get information about what is happening in the park or can give general feed back whilst carrying out their general day to day duties.

12.5.2 Rangers supplement the contracted litter collection on an as necessary basis, which can be two three, or four times during the busy summer months, equally they react to spot littering e.g. fly tipping or broken glass.

12.6 Graffiti removal occurs each morning, so that the perpetrators of the graffiti get bored, as their work cannot last for more than a few hours and always less than 24 hours. This has proved very successful in deterring graffiti although it has attracted major attacks from gangs outside the area who presumably see it as a challenge, for example. The large stainless steel ventilation unit from the restaurant that features strongly in the Terrace Garden is a magnet for graffiti and it is essential that this is removed as soon as possible and the surface coated with WD40 to keep the surface clean and make further graffiti more difficult.

The cruciform monoliths have been treated with a special paint that allows graffiti to be removed with soap and water. The design of the tubular steel seats makes graffiti hard to apply.

12.7 The more complex gardening role e.g. the ecology area is largely be undertaken by the Rangers, initially as a supplement to the contractor, but they will take on this role increasingly more as the staff and volunteer compliment increases. It is unlikely that the Rangers will take on the grass cutting, as this would require significant investment in machinery, which would be unlikely to be recouped given the scale of the area.

12.8 The maintenance of the terrace garden and the cascade and water features will also be part of the remit as the number of volunteers increase. Routine horticultural tasks e.g. pruning, shrub and tree and bulb planting will ensure that the rangers have a good grounding in horticulture and could pursue this as a future career opportunity. Rangers are expected to have a full although not necessarily specialist knowledge of ecology and bio diversity and undertake works to ensure the stability of a wide range of habitats and their interpretation. In addition, the Rangers lead pond-dipping, sweep netting and a range of similar activities with school children and run monthly volunteer sessions for adults.

12.9 The rangers undergo regular police checks so that they are able to undertake the role of play workers and provide school holiday activities both in the park and in the Play Park. This will mean that the local children grow up with very positive experiences of the Rangers and a different form of interaction may take place as they get to age where traditionally disaffected youth turn to vandalism and graffiti. This is very much a long-term strategy that depends on building a positive relationship over a long period; however the rangers are still expected to enforce the byelaws.

12.10 As Event Officers, the rangers ensure that all events run smoothly and that the park and its buildings are not compromised by the events taking place. The client will have met the person at the pre booking stage and will have a known person on hand to manage any last minute problems connected to the hiring of the building and will be trained to resolve them efficiently. The cost of such provision is added to the bill of hire.

12.11 Event organisation is a part of this role and will include seeing fairs; circus's and exhibitions comply with their terms of hire. They will also take part in discussing more complicated events e.g. Festivals etc and supervise the smooth running of the same.

12.12 In their role as the visible presence of the park the Rangers organise, publicise and lead a range of guided walks as part of an annual programme of events that will encourage more and wider use of the park.

12.13 In this way the Community rangers are able to interact with all park users and will truly become 21st century ambassadors for a 21st century park.

12.14 The community rangers are one of several other measures introduced in order to increase perceptions of safety.

12.15 CCTV cameras are in operation through the centre of the park and also in the Children's Play Park. The cameras are monitored from a control room that is linked to the local police station. Cameras are also in operation on the outside of the park a either side of the Green Bridge.

12.16 Lighting in the form of lampposts occurs along the spinal path, the towpath, and at crossover points on major routes. These are particularly important as the park boasts unfettered access around the clock seven days a week throughout the year. The lighting in the park has been enhanced with the addition of new lights and the replacement of some lights with stronger outputs

12.17 Police liaison occurs between the Park Director and the local Police Stations. Officers on police horses continue to be regularly seen patrolling the park.

Maintenance

13.1 The park has been designed specifically to reduce the amount of maintenance necessary in a bid to be a sustainable park. The various sources of revenue described previously are used to ensure the ongoing sustainability of the various projects within the park. The annual grounds maintenance budget is £180,000, which includes in-house as well as contractors costs and other services.

13.2 The trees are mainly relatively young and there are few that can truly be called mature. Due to the thin topsoil and the planting of larger specimens, establishment has become an issue. However, the park seems to have been over planted so currently trees that do not survive are not automatically replaced. (See also 14.2.4)

13.2.1 The other significant problem of establishing young trees is the damage caused by the pit bull terriers in the process of their training as fighting dogs. It appears that their owners hang the dogs from the lower branches of young trees in order to encourage strong jaws regardless of the detriment to the trees. This practice is widely known yet never witnessed. Fortunately it seems that the practice is in decline.

13.2.2 The larger trees, mostly London Plane are pruned on a four year rotation to prevent encroachment onto the road which is used by double decker buses.

13.2.3 Many of the trees are planted on thin soils or in the case of the Green Bridge, in large containers. For this reason it is important for all the trees to be routinely checked for drought intolerance and to irrigate as necessary. In 2012 a programme was implemented in having very small whips on the bridge with water availability to determine the root growth and so eventual height of the trees and to plant with drought tolerant species including gorse.

13.2.4 An annual inspection of the trees will establish and programme restorative/remedial pruning, and in order to prevent an aging tree stock, some whips will be planted each year at various points throughout the park.

13.3 Shrubs are planted throughout the park and will be pruned to retain their natural habit, flowering and fruiting characteristics. Borders will be lightly forked annually and compost added where available. Borders will be kept in a weed free condition. Where overcrowding occurs, shrubs will be removed as part of the winter work programme.

13.4 The grass along the main road will be mostly kept shorter whilst large areas of the interior and all slopes will be managed as meadowland. A one-metre strip of short mown grass will flank all the paths in the park and a two-metre strip of unmown grass will surround all areas of copse and scrub to form a buffer zone and to increase species biodiversity. This course of action will prevent indiscriminate pedestrian trampling but will allow areas for picnicking, sunbathing etc.

13.5 Vandalism does occur, but mostly on a fairly limited basis. The fact that the park is open 24 hours, seven days a week could make the park vulnerable. However, the ethos of the park is to encourage more active use to deter acts of vandalism and this seems to be working in the main. During 2011 no major acts of vandalism were identified although metal seats (one suspects stolen for their scrap metal value). The situation will continue to be monitored.

13.8 50,000 bulbs will be planted each year for a period of 10 years (2005 was year 1). Bulbs will be introduced each autumn in large drifts to bring a more horticultural flavour to the park. Volunteers from Canary Wharf and the city have now planted almost 500,000 bulbs and it is estimated that to date we have planted 950,000 bulbs in the park. A continual band of snowdrops along front edge of the park has been extended each year and now heralds the spring to the casual passer by along the complete length of the park. At the Silver Birch Grove a large drift of Chionodoxa, Scilla, Anemone, and Bluebell was planted by volunteers and these continue to be added to provide a carpet beneath the trees from February to May. Perhaps the most dramatic bulb display is that of a swoosh of crocus which in February will number some 120,000 in mixed colours and attracting a great number of positive comments from the local community. Each year at least one new bold scheme is introduced.

13.9 As the park is managed for bio-diversity, a large section does not conform to routine grounds maintenance, therefore negotiated through the contract. E.g. there will be areas of wild meadow which is constantly changing, and the maintenance regime which is constantly being refined in response to conditions. Please see Appendix G, which is a sample of the full specification tendered to our Contractor Fountains and will form the basis of the Direct Labour Organisation agreement that will be introduced from April 1st.

13.10 Seating will be maintained and kept in good repair and an annual visual check will be carried out each January so that all repairs can be completed by Easter. More seats of the tubular steel design will be added where seating is considered to be sparse. As the particular design costs £1,000.00 per seat it is only possible to add one or two seats a year unless a previously unidentified source of funding becomes available. This year the Friends are paying for two new seats to aid older people to sit at points throughout the park.

Examples of earlier styles of seating that do not conform to the corporate image of the park have now been removed. The two types of seat provided are the stainless steel tubular for paths and the chunky wooden for setting in grass.

The park has also benefitted from the installation of natural seating's across the park. This has proven successful in terms of its usage, cost-effectiveness, maintenance and sustainability.

13.11 Monitoring is carried out by the local authority's Contract Monitoring Team and the Parks Development Officer who visits the site at least four times a week. To assist in the monitoring the Director receives a copy of the programmed work for the next period. The Director meets monthly with the Contract Manager to walk through the park and discuss any outstanding issues and is in daily contact to resolve local issues. Each quarter the Director receives a copy of the variation orders and any penalties issued, so that the money saved within the contract can be re-invested in the park and does not wait until the end of the year. This will change following the introduction of the Direct Labour Organisation but the procedures for dealing with any issues arising has yet to be worked out.

13.12 The Contractors for the park were Fountains/Environmental who were taken over by AOS and who were responsible for the general grounds maintenance which will be taken over by the Direct Labour Organisation. The daily litter picking and collection has been

taken over by Veolia. The manner of managing the DLO has yet to be worked out as other issues have taken priority in getting the outfit up and running.

13.13 The Parks development Officer monitors building Maintenance and works issued to relevant contractors either directly or by the Building and Technical Services Team employed by the local authority. Specific pieces of equipment are routinely serviced under a service level agreement with the manufacturer; e.g. the fountain and the water play feature in the Children's Park.

13.14 General day to day repairs are dealt with in one of three ways. Small repairs e.g. blocked sinks/urinals etc are dealt with by the Rangers two of whom have had specific training. Routine repairs that fall outside the scope of the rangers are passed on by the rangers directly to local contractors who carry out most of the councils repair eg Water leaks or fence repairs. Finally major repairs eg boiler replacement is passed to the Council's Buildings and Construction team to be managed by their clerk of works.

13.15 Play equipment is repaired by the manufacturer/supplier other than routine replacements e.g. swing chains which are carried out by the rangers.

13.16 The cleanliness of the buildings is the responsibility of the Senior Play Coordinator as he has close links with the cleaning contractors due to managing the Play Pavilion. The rangers supplement this monitoring but report any issues through the Senior Play Coordinator. The Head of Parks also carries out regular spot checks.

Environmental impact of the park and Sustainability

14.1 In its original condition the park was mostly comprised of short mown grass that was incredibly species poor, a condition that was also reflected in the number of species of wildlife that could be seen. Areas not covered in short grass were mostly covered in tarmac or fly tipping. Since the park has been developed it is estimated by the Environment Trust that the number of species has risen by some 50%. In 2004 monitoring of some invertebrates took place in the park to provide a base line against which to measure progress of the ecological policy. (See also the Ecology Strategy).

14.2 There are three earth sheltered buildings in the park, which are the first such publicly owned buildings in the United Kingdom. From the entrance most of the building is covered with earth and grass and has the appearance of a gentle hillock. A glass front looks out on to the park allowing a lot of natural light whilst the earth mounding provides insulation for the building.

14.3 The go-karts are the first electric vehicles to be used in London for this purpose and are environmentally friendly in terms of air and noise pollution. A solar canopy remains an aspiration of the Go Kart manager and will be installed over the track to provide power to the karts once the financial climate allows.

14.4 The wind turbine located in the Ecology Park is used to power the pump that circulates the water in the lake. However, it also serves to act as an example of what a wind turbine looks and sounds like. Unfortunately a new motor is required at an estimated cost of £9,000 and with the current budget restraints it is unlikely that this will be identified in the immediate future.

14.5 The replacement of the strict mowing regime with a meadow management plan has not only given a huge boost in terms of bio diversity, but also slightly reduces the annual cost of mowing.

14.6 All wood felled on the site is either left in situ to decompose or is taken to the long grass areas where the benefit to wild life derived from the decomposing wood is greatest. Wood felled at other sites is also welcomed in the park as are bark chippings which are used for footpaths and to create a forest floor habitat amongst groups of trees. The only exception to this policy is if the trees are diseased and the arborist recommends removal and burning.

14.7 All grass and green waste resulting from pruning, the mowing of meadows or the annual leaf fall are taken to the composting bins which is a part of the outdoor classroom or the composting bin that serves the children's growing zone as part of the Play Park.

14.8 The contractors as part of the contract are required to recycle as much litter as possible and thus the litter picking is separated out from land fill waste. This is particularly evident in the Skateboard Park where there is a preponderance of plastic water bottles.

14.9 Wherever possible materials arising from events are recycled so the cardboard from Cardboard City may be used at Halloween for the Park after Dark. Spare wood may be burnt at the fire ranger sessions. Plants used to plant some of the beds in the Art Park are lifted and divided to plant new beds after two growing seasons.

Conservation of Heritage

15.1 As a relatively newly constructed park, little of the physical heritage remains to be conserved. However, there are some smaller elements that give a flavour of former times and these should be conserved and interpreted for the park visitor.

15.2 A plaque just outside the park on the Railway Bridge on Grove Road commemorates the place that the first V2 bomb landed in London. This has been incorporated into an information panel in the park to highlight the very real sacrifice made by the people living in this area during the Second World War

15.2.1 Two plaques proclaiming the park as the King George the V Playing Fields are embedded in the gate piers adjacent to Copperfield Road. These will need to be cleaned of graffiti and if necessary re carved. Interpretation panels refer to the life of King George V and the setting up of the fund in the context of the development of the park.

15.3 The tall brick chimney dominates the area currently known as Kirk's place and probably dates back to Victorian times. It is in fact a listed vented sewer chimney vent and as well as protection and some restoration it should be interpreted either in its own right or as a longstanding feature of the local skyline. It is owned by Thames Water

15.4 The Regents Canal, although strictly speaking not a part of the park, does have a symbiotic relationship with the park that should be recognized and celebrated. Park furniture could be placed near the canal and the old mile marker stones restored, whilst the canal, its history and its links to Mile End Park are explored in more detail in a series of interpretation panels. Talks with British Waterways continue to take this project forward, but the uncertainty of the current financial climate has stalled discussion.

15.5 An art exhibition evoking the memories of people who had moved to the Mile End area resulted in English Heritage designing two more panels to be sited in the park describing local history through the memories of the wider community in relation to the locale.

Marketing

16.1 The web site is been designed to meet the needs of the park visitor, park enthusiast and researcher alike. It is intended that it will be updated regularly to mirror the ever-changing face of Mile End Park. Social network eg Facebook and Twitter also serve to market the park and activities taking place in the park

16.2 Exhibitions are mounted at the Art Pavilion covering a range of themes. Artists range from those who have exhibited nationally or internationally to those in their final year at Art College. Each exhibition brings in a new audience to the park and the accompanying publicity raises the parks profile. In addition we also exhibit local community groups and schools

16.3 Newspaper articles in the local, national and trade press maintain interest in the evolving park project. They cover the various aspects of the park, encouraging the reader to see the park offering a variety of opportunities to the casual park visitor. The consistent message to the reader is that the park can offer something for everyone and will reward a longer visit. The subtext is that there is always something new happening in Mile End Park.

16.4 Each year we give the park a focus, in 2005 it was bringing the countryside to the East End; 2006 was the year of Inclusive play; 2007 was “Making Ourselves Heard”; 2008 was the year of Building on Success; 2009. it was the Playful Park , 2010 was Tightening Belts, 2011 was the year of ‘Mile End Means Business’ 2012 was getting fit for the Olympics; 2013 was “Leaving a Legacy”.

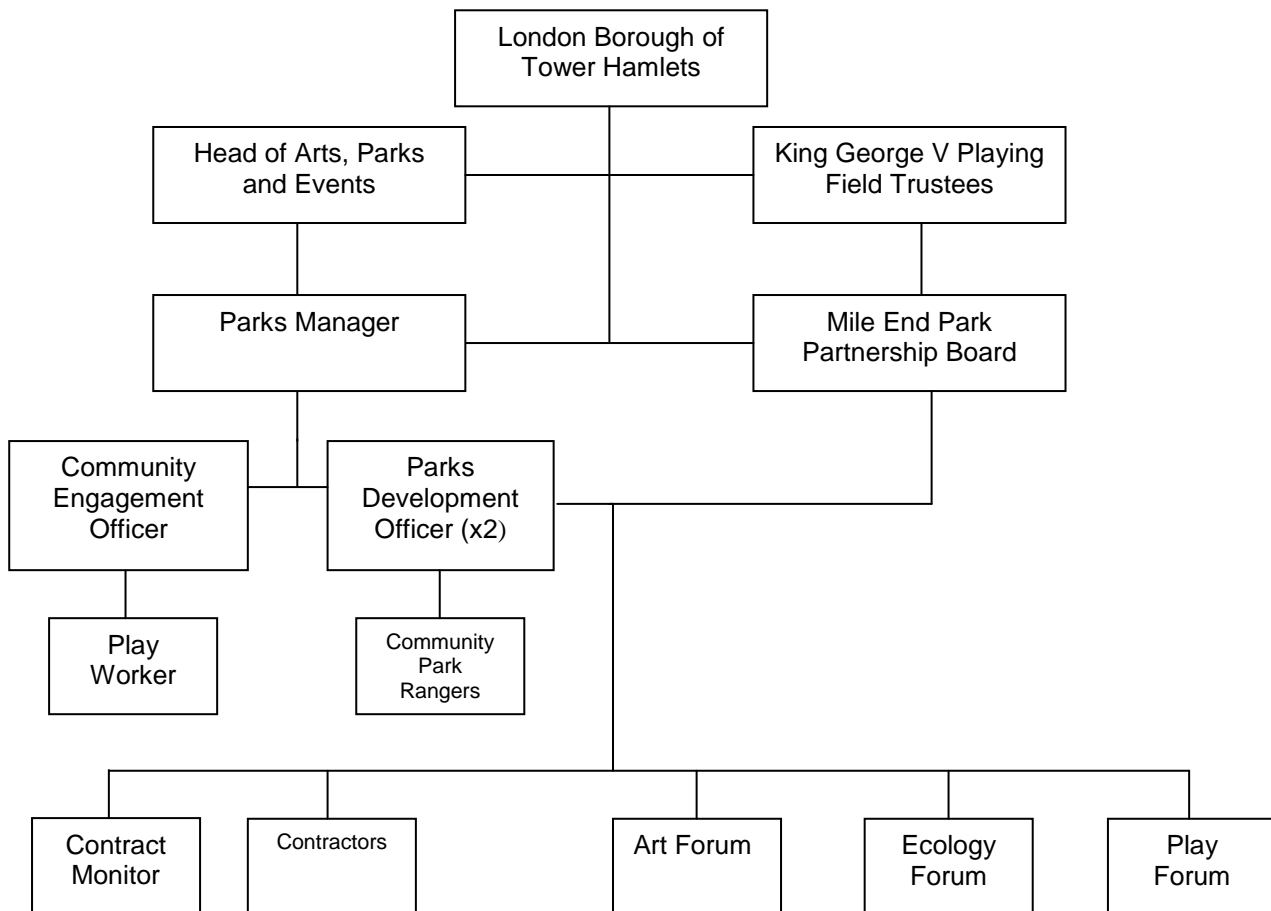
16.5 In 2014 the chosen theme is “A Change in Time” to acknowledge the new team, contractors, and also new objectives for the park.

16.6 The Art Forum have developed their own website which is updated by the Forum and is attracting high number of users

16.7 The Art Forum have also produced a number of flyers and posters to advertise the pavilion as will be distributing these through their contacts.

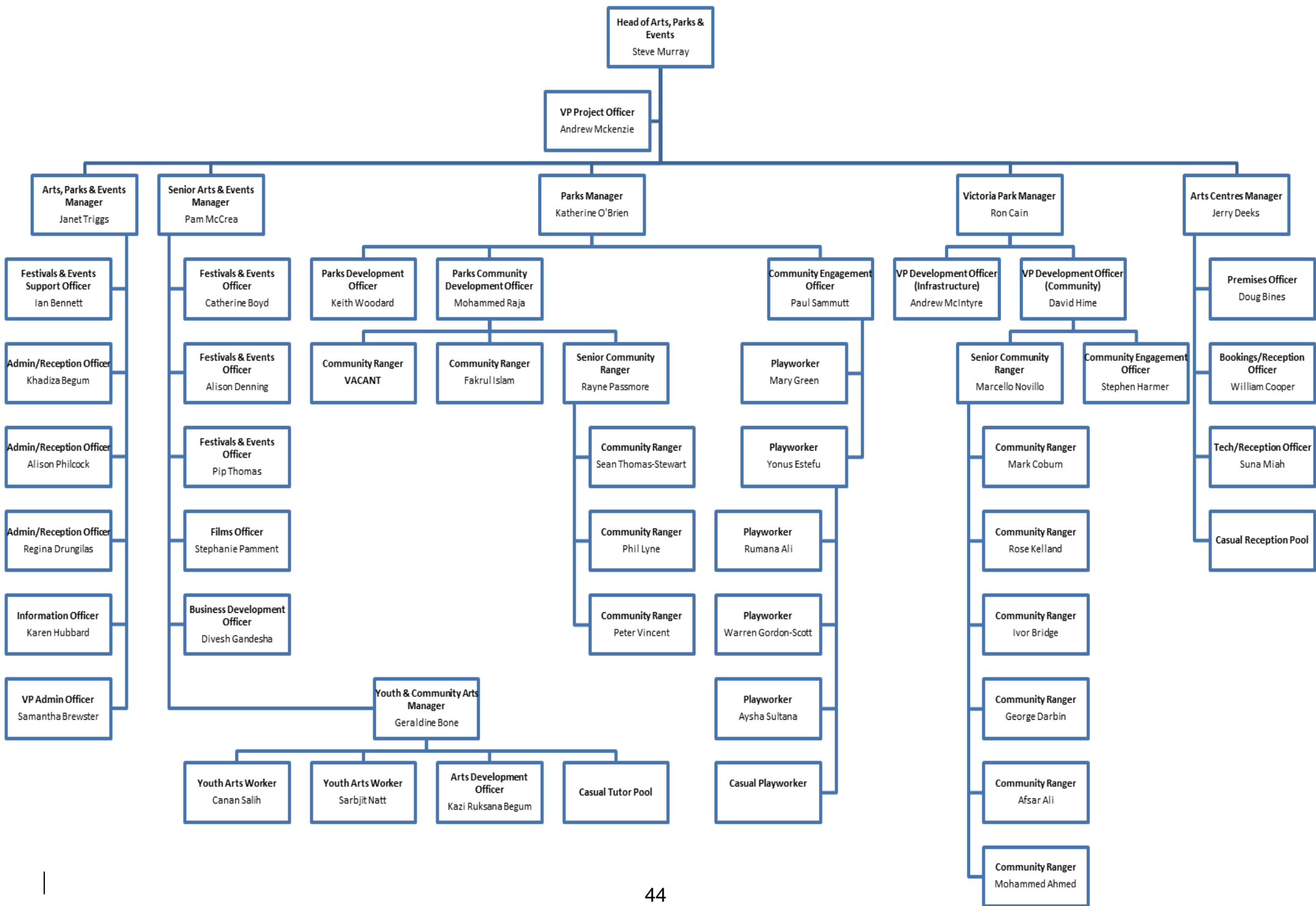
Management

17.1 Mile End Park Staff Chart 2014/15



17.2 Structure of LBTH Arts, Parks and Events Services 2014

The recent restructure in March 2013 saw the two services, LBTH Arts and Events and LBTH Parks and Open Spaces being amalgamated into one service. As a result some posts were deleted and new posts created, this also includes the deletion of the previous Head of Parks and Open Spaces, with one head of service taking overall responsibility.



B.2 B.2 CLEAN AND GREEN Green Team Structure

Green team structure is currently being finalised and this section will be update.

17.2 The overall responsibility of the park is the Head of Service; with Parks Development Officers managing the day to day running of the park with the Ranger service and also the three forums mentioned. The Parks Manager manages the ring- fenced budget for the park. The latest reorganization has seen another change with the role of Head of Arts and Events being subsumed into the Head of Arts, Parks and Events.

17.3 The Head of Arts, Parks and Events reports to the King George V Charity board that is made up of the entire cabinet of Tower Hamlets chaired by the Mayor.

17.4 The Head of Arts, Parks and Events also reported to the Mile End Park Partnership board. This was formed to oversee the construction phases of the park and continues, to cover the outstanding items. The board consists of two councilors from the London Borough of Tower Hamlets, the East London Business Alliance and trustees of what was the Environment Trust and are joined by the Friends of the park in the capacity of observer who enjoy speaking rights but do not have voting status.

17.5 The Head of Arts, Parks and Events post is located in the Culture and Learning Section of Communities, Localities and Culture in the London Borough of Tower Hamlets, and I now run alongside other parks though it has its own ring fenced budget due to its charitable status. The Clean & Green section is also located in the Department of Communities, Localities and Culture in the London Borough of Tower Hamlets and is responsible for maintenance and cleanliness of parks equipments such as play props and also monitoring and maintenance of the streets. From March 2013 the Green Team were launched as a Direct Labour organisation and have taken over the grounds maintenance of the park.

17.6 The new Parks Manager posts manage 2 Community Development Officers, one Community based and the other Infrastructure based. The Parks manager also manages the Community Engagement Officer.

17.7 The Parks Development Officer for Community line manages one Senior Community Ranger, five Community Rangers.

17.8 The Community Engagement Officer overseeing several other play center's and manages the play workers based here in the park and also 2 other locations.

We have also increased revenue from the hiring of the pavilions, corporate volunteering and re-letting of shops, and this has increased by 30%. Further to this the Park always seeks further external funding and work with other groups to maximize expenditure or reduce costs where ever possible.

Action Plan 2014

18.1 The Objectives in the 2014 Action Plan collate objectives for the park in general and from each specific forum, the latter are repeated in the individual strategy as the strategies are working documents for each group. All the objectives are the responsibility of the park officers and the Mile End Park team.

18.2 Park in general

18.2.1 To continue to reduce the contribution from the local authority by raising income levels from all business opportunities in the park including the Pavilions, Shop Units and businesses operating in the park.

18.2.2 To repair the infrastructure where necessary as the park is now 14 years old and requires some repair and replacement.

18.3 Taken from the Ecology Strategy

18.3.1 Maintain the habitat in Kirks place by continuing to layer broken bricks crushed into rubble and dust and spreading it across the area. Also keep the area protected by maintaining a fenced off area. This area is home to the rare Bombardier Beetle discovered here in 2010. It will also be important to remove shrub and scrub as this will alter the habitat and because it is fenced off it is not likely to be subject to natural trampling.

18.3.2 Collect an average of 100 woodland plants from the Cemetery Park and plant them in the parks woodland walk near the chestnuts by Solebay Bridge, and also some in Kirks Place, behind Clinton Road and the Liminal areas.

18.3.4 Promote the Park as a receptor site for reptiles (common lizards, grass snakes etc).

18.3.5 Explore avenues to introduce another site in Kirks Place creating a second habitat for more Bombardier Beetle and other species.

18.3.6 Plant a new hedgerow around the stretch of Wennington Green to hide the metal fence at the base.

18.3.7. Establish additional natural woodland walk areas within the park. One such path will encourage access from Mile End Road into the park. (Location is through the bus stop stand outside Nando's through the Cascade Fountain route). Other areas should also be explored throughout the park

18.3.8 New Zealand pigmy weed has been identified in one of the lakes and needs to be addressed urgently. The Bio Diversity Officer will offer guidance on identification and eradication.

18.3.9 Continue with adding more habitat piles across the stretch of the park.

18.3.10 Resurface the central reservation and re-plant areas of gap with hedgerows.

18.3.11 re-planting of the Flag Pole borders and re-planting of the arts bed in front of the Arts Pavilion.

18.4 Taken from the Art Strategy

18.4.1 It has so far improved impossible to install free Wi Fi to encourage wider use of the gallery both for the artists and the audience to encourage casual drop in when an exhibition is open. However as technology improves it may become easier and a phone line is due to be installed within 2014.

18.4.2 To continue to improve the Art Pavilion Website <http://www.artpavilion.info/> this has really taken off and shows the Pavilion to be a professionally run gallery attracting high caliber artists. The database is also growing exponentially but both this and the web site need further developing within 2014.

18.4.3 Internal repairs include developing a storage room and also a registrars / office room with section 106 funding.

18.4.4. Developing an internal kitchen utility area for caterers to use during large events.

18.4.5 Purchase 200 chairs and 20 tables for hirers to use for events, weddings and others uses in the Arts Pavilion.

18.4.6 Installation of hanging rail systems to offer additional space to arts exhibitors and also to divide sections of the room. This funding is also secured from section 106.

18.4.7 The Art Pavilion is a large space which whilst appealing to collaborative exhibitions does put some artists off as they may not have enough work to fill the space. It is therefore proposed to subdivide the space so that it can be operated as one or two spaces and therefore draw in more artists and their exhibitions.

18.5 Taken from the Play Strategy

18.5.1 The gardening club will be revitalised with one member of staff and one volunteer undertaking regular sessions and linking these sessions with cooking activities.

18.5.2

18.5.3 Installation of additional vegetable beds within the growing zone in the Children's Playground

18.5.4 Installation of a new storage container to accommodate for additional childrens play equipment

18.5.5 Enhancement of children's playground includes installation of new ghost swing

18.5.6 Enhance of children's playground includes installation of new accessible sea saw

18.5.7 Replanting of the raised bed within the children's playground and additional planting within the playground. This includes planting of tree saplings

18.5.8 Installation of additional picnic benches and tables, together with additional natural benches

18.5.9 Installation of a living tea pee tree with seating

Individual Strategies

19.1 The three strategies that accompany this management plan are produced so that each Forum can see the results of their time and work directly informing the direction of the park.

19.2 Each strategy is subjected specific covering in depth the areas of Ecology, Play, Art and Security.

19.3 Each strategy contains its own action plan and is designed to be contained within the overall management plan and also as a stand alone document for the use of the individual forum.

Appendix A

1. Corporate Policies and Strategies

Mile End Park and L.B. Tower Hamlets Strategic Priorities/Corporate Objectives 2013

The Strategic Priorities for 2013 have been defined as follows.

- One Tower Hamlets
- A Great Place to Live
- A Prosperous Community
- A Safe and Supportive Community
- A Healthy Community

The details behind these themes are expanded upon below.

2. Tower Hamlets Vision and Community Plan

Tower Hamlets Council launched its first Community Plan in May 2001 following extensive consultation, involving residents, the Council and its public service partners, the voluntary and community sector, and businesses. The Council led the process, but involved a working group of key partners from other public services, large and small businesses and the voluntary and community sector. A number of key priorities were identified through the consultation process and the determination to tackle these underpinned the vision for the Borough's Community Plan to 2011, a vision in which services work in partnership to bring about early benefits to residents.

To fulfil this vision, key partners have agreed to focus service activities on the priorities identified through the five cross cutting themes set out in Tower Hamlet's Community Plan, which seeks to make Tower Hamlets:

One Tower Hamlets

1. To reduce inequalities, foster strong community cohesion and provide strong leadership inclusive services
2. Working effectively and efficiently as One Council

A Great Place to Live

3. Provide affordable housing and strong neighbourhoods
4. Strengthen and Connect Communities
5. Support vibrant town centres and a cleaner safer public realm
6. Improve the environment and tackle climate change

A Prosperous Community

7. Support lifelong learning opportunities for all
8. Reduce worklessness
9. Foster enterprise

A Safe and Supportive Community

10. Empower vulnerable people and support families
11. Tackle and Prevent Crime
12. Focus on Early Intervention

A Healthy Community

13. Improve health and reducing difference in people's health by promoting healthy lifestyles
14. Support mental health services to improve mental health
15. Improve access to, and experience of, health services

These themes are developed in the Council's Corporate Strategic Plan and the Directorate three-year action plans. These set out action grids with objectives, key activities, milestones and success criteria detailed and time tabled. Key officers are also identified.

Mile End Park works to achieve these corporate objectives.

3. Public Consultation

The borough follows a policy of active consultation and involvement with the community. Its aims and objectives reflect this and details are therefore subject to change. The borough has set up 8 Local Area Partnerships to increase the participation of the local community in local issues and developments. From the Best Value consultation exercises, it is clear that local people are most concerned about basic issues such as dog waste, security, park keeping and cleanliness; a large majority of people think that well-maintained parks promote social responsibility, increased use and reduced vandalism. Consultation for Local Agenda 21 found that additional issues are trees, children's play, a sense of well being, wildlife and need for balance in a densely built up area. In 2010 a park project based in the Skateboard Park was one of several to be submitted to participatory budgeting through which local residents decide what the spending priorities should be.

4. Planning policies

The current Unitary Development Plan defines the site as a Metropolitan Open Space.

The land use is public open space and it is therefore protected from development. The land is also held in trust by the King George V Playing Fields Trust that operates, from the Fields in Trust offering further protection from development.

5. Local Agenda 21

This policy states that the Council will aim to protect and enhance all open space in the Borough protect and enhance all wildlife and their habitats reduce all types of environmental pollution reduce the inappropriate use and disposal of hazardous materials encourage waste minimization encourage the involvement of individuals in the care of the environment encourage the use of local resources work in partnership with the local community to care for the environment work towards achieving equal access to a safe and pleasant environment for all sections of the community The reviewed UDP will be subject to a Strategic Environmental Impact Assessment and the new Environment Chapter of the UDP is much more demanding of developers including developments in parks.

6. Tower Hamlets Biodiversity Action Plan:

Habitat Action Plan for Parks, Squares and Burial Grounds

“Tower Habitats” is a group of council officers (including Parks Officers) and voluntary sector bodies co-operating to prepare and deliver the Biodiversity Action Plan for Tower Hamlets. The new plan was launched in May 2012. The Parks, Squares and Burial Grounds Habitat Action Plan contains detailed actions and targets to increase the area and value for wildlife of the various types of park in the Borough. www.towerhabitats.org.uk and its’ commitment to achieving NI197.

7 Health and Safety

The London Borough of Tower Hamlets Corporate as well as the Communities, Localities and Culture Directorate’s Health and Safety Policies apply in all parks. The policies are too long to be incorporated here but are available to download on the Tower Hamlets Web Site.

The borough is committed to promoting the Health, Safety and Welfare of all employees and of the public who come into contact with its premises and services. It is the policy of the Directorate to develop a positive Health and Safety culture throughout the organisation because we believe that good safety is good business. This Health and Safety Policy intends to set the ground rules through which continuous improvement of the standards of Health, Safety and Welfare of all employees and clients can be achieved. The safety policies are in accordance with section 2(3) of the Health and Safety at Work etc. Act 1974 and are revised on a regular basis. Their implementation is checked regularly by the Directorate’s H&S officer. Risk assessments have been carried out for parks’ workers. Risk control measures are in place and are reviewed in the light of changing practice. The Director of Mile End Park sits on a departmental group considers amendments to policies, new policies and training in health and safety.

The Mile End Park Rangers have been trained in first aid and dealing with aggression in difficult circumstances. The two part time play workers, who run the Stay and Play, have received similar training albeit not quite so intensive. All Fountains Ltd. staff are given an induction and basic H&S training. Risk assessments are done for all tasks and staff must meet the resulting codes of practice. All cleansing staff are given manual handling training.

8. Complaints procedure – Customer Promise

Tower Hamlets has a three-stage complaint procedure. Stage 1 tries to resolve problems informally face to face and stage 2 is formal (with complaints received in writing or by phone in one of 8 languages or by minicom). Complaints are acknowledged investigated and responded to in 10 working days. The complainant then has the right of appeal to the chief executive (20 days). If the matter is still not resolved, the individual can thereafter take the matter up with the Local Government Ombudsman to ensure the Council has acted fairly and in accordance with its agreed procedures.

The Customer Promise guarantees a response within 10 working days to written enquiries and comments. The strategy has improved accessibility for members of the public, by telephone, letter and face to face and is strictly monitored to ensure that targets are being met.

9. Equalities

Equality issues are high on the agenda in an area with a high proportion of minority ethnic group residents and the department has a number of initiatives to foster good race relations. All sports clubs that make bookings for use of the pitches are required to sign and adhere to the borough's Anti-Racism in Sport Charter. The department encourages events that celebrate ethnic diversity and racial harmony. An Equality monitoring officer offers support and advice to ensure that the equality impact assessments have taken place for all new initiatives and that all consultation exercises are accessible to all sections of the community. An equalities unit monitors all projects to ensure that all conform to an inclusive agenda including Ethnicity, Disability, Gender Lesbian, Gay, Bisexual and Transgendered issues together with the issues of Older People are fully considered in all activities. In December 2008 Mile End Park undertook an Equalities Impact Assessment; the recommendations of this will continue to feed into both this Plan and the Annual Service Plan. The Director of Mile End Park sits on the departmental Equalities Action Team which looks at policies issued from the corporate centre and also equalities initiatives within the department. During 2010 the park worked closely with the Tower Project offering placements to their clients with special needs. In the late summer a theatre group comprised of actors with disabilities gave two performances to local children.

10. Policy on peat and pesticide

The park has its own ecology strategy (contained in the Management Plan) and is dedicated to sustainability and creating a wide variety of species rich habitats. For this reason the park will not have pesticides used in the park nor will it condone the use of or purchase stock from suppliers using peat based compost. Peat will never be used as a soil conditioner. However where chemicals are the only solution to a particular issue an exception will be made. However all such exceptions will be based on independent advice received from Natural England. An example would be the spraying of a hectare of land with a contact herbicide to allow the establishment of a wild flower meadow on Kirks Place.

Appendix B

Events in Mile End Park 2014

Programmed events at Mile End Park 2014		
MONTH	DATE	EVENT
March	30.03.14	Easter Eggstravaganza
	30.03.14	Easter Egg Hunt
APRIL	07.04.14	Gardening Club
	13.04.14	Baking with Chocolate
	14.04.14	Mayors Cup Mile End Stadium
	21.04.14	Volunteer event
MAY	04.05.14	Bird Barmy Army
	05.05.14	Gardening Club
	14.05.14	Girls Athletics champs MES
	16.05.14	Boys Athletics Champs MES
	18.05.14	Cultural Food Festival
	21.05.14	English schools Athletics championship MES
	MAY HALF TERM 27th-31st	
	28.05.14	Pizza Making
	31.05.14	Gardening club
JUNE	08.06.14	Fathers day Gifts and Baking
	12.06.14	Disability Awareness Event
	15.06.14	Metro Games MES
JULY	06.07.14	FOMEPE Fair and Dog Show
	07.07.14	Gardening club
	20.07.14	Sporting carnival MES
	Start of the summer holiday 24th July -2 September	
	31.07.14	Cardboard City (Love Parks week)
AUGUST	07.08.14	Play Day Foot Steeps in the Park
	13.08.14	Water festival
	14.08.14	Summer sports festivals KEMP
	15.08.14	Youth service Games MEPLC
	19.08.14	Over night camp
	21.08.14	Summer Sports Festivals John Mc Dougal
	27.08.14	Fire Session
SEPT	08.09.14	Gardening club
	15.09.14	Jam Making

Oct	19.10.14	Soup Making
	October half term 28th-1st Nov	
	31.10.14	Teenie Halloweeny
Nov	TBC	Ecology Park – Halloween Event
Dec	14.12.14	Christmas Event and Baking

The above planning diary is subject to change.

We reserve the right to change any of the events but please rest assured that at least one event will take place each month.

Please check our website for details.

Appendix C

School term and holiday dates

School term dates 2013/14

Term one (75 days)

Term one start Monday September 2 2013

Half-term start Monday October 28 2013

Half-term finish Friday November 1 2013

Term one finish Friday December 20 2013

Term two (60 Days)

Term two start Monday January 6 2014

Half-term start Monday February 17 2014

Half-term finish Friday February 21 2014

Term two finish Friday April 4 2014

Term three (61 days)

Term three start Tuesday April 22 2014

Half-term start Monday May 26 2014

Half-term finish Friday May 30 2014

Term three finish Wednesday July 23 2014

Five inset days to be taken plus one flexible day for EID al-Adha – please note EID al-Fitr falls during Summer school holidays in 2013/14.

Inset days 2013/14:

- Autumn - First two days of term
- Spring - First and last day of term
- Summer - Last day of term

Eid (approximate) - 2013/14:

- Start of Ramadan - July 9 2013
- Eid Al-Fitr - August 8 2013
- Eid Al-Ada - October 16 2013

Bank Holidays - 2013/14

- Summer Bank Holiday - August 26 2013
- Christmas Day - December 25 and 26 2013
- New Year's Day - January 1 2014
- Good Friday - April 18 2014
- Easter Monday - April 21 2014

- May Bank Holiday - May 5 2014
- Spring Bank Holiday - May 26 2014

School term dates 2014/15

Term one (75 days)

Term one start Monday September 1 2014

Half-term start Monday October 27 2014

Half-term finish Friday October 31 2014

Term one finish Friday December 19 2014

Term two (55 Days)

Term two start Monday January 5 2015

Half-term start Monday February 16 2015

Half-term finish Friday February 20 2015

Term two finish Friday March 27 2015

Term three (67 days)

Term three start Monday April 13 2015

Half-term start Monday May 25 2015

Half-term finish Friday May 29 2015

Term three finish Wednesday July 22 2015

Pupils are required to be in school 190 days.

Five inset days to be taken plus two flexible days for EID al-Adha and EID al-Fitr.

Inset days 2014/15:

- Autumn - first two days of term
- Spring - first and last day of term
- Summer - last day of term

Eid (approximate) 2014/2015:

	2014	2015
Start of Ramadan	June 28 2014	June 18 2015
Eid Al-Fitr	July 28 2014	July 17 2015
Eid Al-Ada	October 4 2014	September 23 2015

Bank Holidays - 2014/15

- Summer Bank Holiday - August 25 2014
- Christmas Day - December 25 and 26 2014
- New Year's Day - January 1 2015
- Good Friday - April 3 2015

- Easter Monday - April 6 2015
- May Bank Holiday - May 4 2015
- Spring Bank Holiday - May 25 2015

Appendix D

Mile End Park Events Manual

Introduction

Welcome to the Events manual for Mile End Park. It is designed to be a concise guide to planning and marketing a Mile End Park event. It is a living document, which is designed to be updated by the whole team as new events, contacts or marketing methods are found.

Note to users: If you find that any of the contacts or marketing methods do not work please insert a note giving reasons why. If in the course of marketing an event you find a new method or contact please insert details in the relevant section. All changes should be made on the master copy, which is held by Park Director.

Marketing Strategy

Each different type of event will require a separate style of marketing but the following should be implemented each year and/or are relevant for all types of events:

IT Marketing:

Websites:

- LBTH: A rolling programme of events should be posted on the Mile End Park webpage and information sent to the arts and events team to be listed on the Events database: <http://www.towerhamlets.gov.uk/templates/events/>

There other websites to consider are:

- MyVillage.com for Tower Hamlets: To list fill in form found at http://www.mytowerhamlets.co.uk/towerhamlets/fe-community_contact-us.htm and email to myvillage@globaldatapoint.com allow at least one month for your event to show on the site.
- Visit London.com Send press releases and information about events in London to us at editorial@visitlondon.com or email specialevents@globaldatapoint.com
- WhereCanWeGo.com: register and you can advertise events for free <http://www.wherecanwego.com/events/signin.aspx?sid=&tab=3>
- Your Local London: call Sara Newman on 07810 503 366 or go to the your local London website. www.yourlocallondon.com

Email:

Targeted address groups need to be set up for each event type. A month prior to each event a branded email should be distributed with any official publicity attached listing:

- Event name • Target audience
- Date • Time
- Venue • Special conditions

Static Advertising:

1) Banners should erected listing details of next large event

2) Information sheets/ posters both as yearly programmes and information on next events should be posted around the park and in local shops. These should be simple and eye catching and should be posted in the same location each time so the public know where to go in the park for information. These locations should include entrances to park, by pavilions and in the sports centre

Poster sites

Location	Type of poster required	Notes (inc. Contact details)
eg: Orange Room	A4 Paper poster	
eg: Entrance to Children's Park	A3 Laminated poster	

Media:

Where a form isn't specified all press releases should be made in the following format:

PRESS RELEASE:

- Release date: • Title of event
- Event Date and time: • Outline of event: including size and location
- Target Audience:
- List of opportunity for media to attend:

Contact details:

Notes to editors: including letting editors know you would welcome pre event coverage

Newspapers

London Papers

- The Metro: London Office:
News Editor: Sarah Getty; Editorial Assistant: Hayley Coyle
Tel: 020 7651 5242
Fax: 020 7651 5342
E-mail: news.london@ukmetro.co.uk
- Metro Life Editor: Siobhan Murphy
Metro Life Assistant: Zena Alkayat zena.a@ukmetro.co.uk
(Entertainment/ theatre/ arts/ music/ books, CDs, etc)
Tel: 020 7651 5415
Fax: 020 7651 5298
E-mail: life.london@ukmetro.co.uk
- The Evening Standard: Londoner's diary
Diary Editor: Sebastian Shakespeare
P: 020 7938 7607
E: diary@standard.co.uk

Editor: Veronica Wadley
P: 020 7938 7007
E: editor@standard.co.uk

- Time out:
Use the form at http://www.timeout.com/contact/?action=mag_form

Submission date for events is two weeks prior to the day of publication, publication day is always a Wednesday.

If submitting an event then please include the following information

- Event Name
- Artists/acts appearing
- Date and time
- Event Location (with address, telephone number, full postcode and nearest public transport)
- Price
- Brief Description
- Contact Telephone Number

Tower Hamlets Papers

East End Life: Email: eastendlife.news@towerhamlets.gov.uk

Tower Hamlets Recorder: Address: Media House, 539 High Road, Ilford, Essex IG1 1UD.

Submit a story at:

- <http://www.newhamrecorder.co.uk/comments/suggestastory.aspx>

East London Advertiser: submit a story at:

- <http://www.eastlondonadvertiser.co.uk/comments/suggestastory.aspx>

- The Wharf: The Wharf, Trinity Mirror, Work One Canada Square, Canary Wharf, London E14 5AP email: newsdesk@wharf.co.uk

Radio

For an idea of listener type for each radio station visit:

<http://www.londonradiostations.co.uk/>

- BBC London Radio (this is the same address for TV): email stories to yourlondon@bbc.co.uk
- Capital Radio: 020 7484 8958 or write to Capital Radion, 30 Leicester Square, London WC2H 7LA
- Heart FM: Fill in form at <http://www.heart1062.co.uk/invite-us-to-your-event-184>
- Magic FM: Magic 105.4, Mappin House, 4 Winsley Street, London W1W 8HF Tel: 0207 182 8160
- Xfm: 0207 054 8000 Address: Xfm, 30 Leicester Square, London WC2H 7LA
- LBC: 020 7314 7300 or fill in form at <http://www.lbc.co.uk/article.asp?id=226024>

TV

TV coverage and pre event publicity should be done on an event by event basis.

BBC London: email stories to yourlondon@bbc.co.uk

ITV London: email event details to planning@itvlondon.com

Or you can text: Text LONDON followed by your message to 80088

Specific Marketing for event Types

Community Events

Websites:

Partnership marketing:

Media Advertising:

Children's and Family events:

Websites:

Post event details on

- Whatson4Kids.com at <http://www.whatson4kids.com/event-announce.php>

London.gov.uk <http://www.london.gov.uk/young-london/kids/events/index.jsp>

- Partnership marketing: In the contacts section are listed possible partners for events. All Children events can be advertised through the schools. Information can be distributed through the head teachers bulletin by contacting Helen Jenner 020 7364 3114 email: helen.jenner@towerhamlets.gov.uk

- Play Organisations can be contacted through PATH

Suzannah@playtowerhamlets.org.uk

- Parents and children can be reached through info@toyhouselibraries.org.uk

- Early years providers can be contacted through Early Years Network Tower Hamlets, Kelsey St, London E2 6HD Tel: 020 77295074

- Children's Information Service: The Tower Hamlets Children's Information Service provides information to parents, carers and professionals on childcare and play in the borough for 0-14 years olds (up to 16 for children with special needs). This includes childminders, day nurseries, playgroups, holiday schemes, breakfast and after school clubs. Details such as vacancies, costs and opening times are available. 189, Roman Road, London, UK, E2 0QY. 020 7364 6495 cis@towerhamlets.gov.uk

- The youth service can be contacted at:

 - Oxford House, Derbyshire Street, London E2 6HG Tel: 0207 739 9001

 - Youth Action UK, The Old Spice Store, Dod Street, London

Tel: 0207 536 2930

 - Poplar HARCA, 167A East India Dock Road, London E14 0EA

Tel: 0207 510 0500

– Media Advertising: Time out do a free kids supplement see above for contact details.

Art events

Websites:

Post on: <http://www.britisharts.co.uk/submit.htm>

Partnership marketing:

In the contacts section are listed possible partners for events

Media Advertising:

Newspaper:

- Evening Standard:
Arts Editor: Fiona Hughes
P: 020 7938 7588
E: artsdesk@standard.co.uk
- Guardian listings at weekend:

Eco Events

Websites:

- Allthingseco.co.uk: To advertise email: econews@allthingseco.co.uk
- live-naturally.co.uk: Submit an event at <http://www.live-naturally.co.uk/yourevents/events/index.php?com=submit>
- www.ecolocal.com: Submit an event at <http://www.ecolocal.com/help/contact>
- greenevents.co.uk/london/: (Also a magazine) email: geonline@btconnect.com

Partnership marketing:

- For Children and Family events link with WATCH: Lucy Harrigan, by clicking on this email address link – lharrigan@wildlondon.org.uk

Event Types Grid

This grid outlines the audience and size for Mile End Park's Regular events and should be used in defining those for ad hoc events.

Delivery Plan outline for events

This is the Outline delivery plan. One of these needs to be completed for each event and built upon. In the first year of using the events file the plans should be filled in as the event planning goes on with notes made on successes and failures. In subsequent years plans should be updated as necessary when changes have been made.

Useful Contacts

This is a directory of contacts who may help with or advertise events it is designed to be added to and annotated by the whole team.

You can search for voluntary sector groups details by accessing:
http://www.towerhamlets.org.uk/clubs_search.asp

Family Contacts

Community Contacts

- Interfaith forum newsletter :Sasta Miah, 020 7364 4455, sasta.miah@towerhamlets.gov.uk
- Interfaith forum newsletter :Sasta Miah, 020 7364 4455, sasta.miah@towerhamlets.gov.uk
- COF First floor of Norvin House, 45-55 Commercial Street, London, E1 6BD. Tel: 0207 426 9970 Fax: 0207 426 9979 E-mail: admin@towerhamlets.org.uk
- Radiyah Safar, Age Concern Tower Hamlets, 020 8981 7124.. She has good links with the Sundial Centre, Neighbours in Poplar, Sonali Gardens, St Hilda's Centre and the Geezers club.
- Shaynul Khan, Assistant Director, London Muslim Centre, 020 7650 3000. Can help put you in touch with other muslim organisations.
- Akbal Ahmed, Communication Officer, Ocean NDC, 020 8709 5300. Has contacts with youth/elderly/school groups also the resident wardens on the Ocean patch which runs along western side of the park.

Children's And Young People Contacts:

- Nurul Islam, Youth Worker, Mile End Youth Project, 07961 397 369. They run their youth club from a church directly opposite the park.

Arts Contacts:

- Steve Murray
artsandevents@towerhamlets.gov.uk

Eco Contacts:

- Kenneth Greenway Cemetery Park Liaison Officer
Southern Grove, London E3 4PX Tel: 07904 186 981

General contacts:


- Cllr Shiria Khatun has very good links with Bangladeshi womens/girls groups around the borough.



Appendix E

Enabling Maps



Enabling Maps provide a pictorial step free map to amenities within the park.


A step-free route from Mile End Underground station to the Childrens Play Park. 1


Map number: **A1** 


  This map takes you from Mile End Underground station to the Childrens Play Park. See back page for information about accessible facilities and bus routes.

The journey is around 440 metres long.
It should take around 10 minutes to finish.
If you have difficulty getting about, it could take 20 minutes.


Under each picture is a time-bar to show how much of the journey there is to go.
 = the length of travel for each part of the journey
 = the length of travel already completed



1 
Turn left outside Mile End Station, the Green Bridge is in front of you. Cross over Eric Street.

2 
At the corner turn left and use the pedestrian crossing to cross Burdett Road.



3 
Turn left and walk down Burdett Road.


A step-free route from Mile End Underground station to the Art Pavilion. 1


Map number: **B1** 


  This map takes you from Mile End Underground station to the Art Pavilion. See back page for information about accessible facilities and bus routes.

The journey is around 210 metres long.
It should take around 5 minutes to finish.
If you have difficulty getting about, it could take 10 minutes.

Under each picture is a time-bar to show how much of the journey there is to go.
 = the length of travel for each part of the journey
 = the length of travel already completed

1 
Turn left outside Mile End Station, the Green Bridge is in front of you. Cross over Eric Street.

2 
At the pedestrian crossing on the corner cross over Mile End Road to the 2nd island. Then turn right and cross Grove Road.

3 
Turn right and go along Grove Road. Go past the bus stop and coin (20p) operated accessible toilet.

Enabling Maps provide a pictorial step free map to amenities within the park.

Appendix F

Map showing segmentation in Mile End Park



Map showing key sites within the park and those transport links within close proximity.

Appendix G



Map showing the dimensions of the park

**LONDON BOROUGH OF TOWER HAMLETS
TENDER DOCUMENTS**

FOR

**THE PROVISION OF LANDSCAPE MAINTENANCE SERVICES:
PARKS AND OTHER SPACES**

SERVICE SPECIFICATIONS

SPECIFICATION FOR LANDSCAPE MAINTENANCE OPERATIONS

<u>DOCUMENT LAYOUT:</u>	<u>PAGE</u>
PREAMBLE TO THE SPECIFICATIONS	6
GENERAL INFORMATION SECTIONS	
Chemical Application General Section 1	15
Highway Regulations General Section 2	20
Supply Of Plant And Other Materials General Section 3	21
SPECIFICATIONS	
User Guide To The Specifications	25

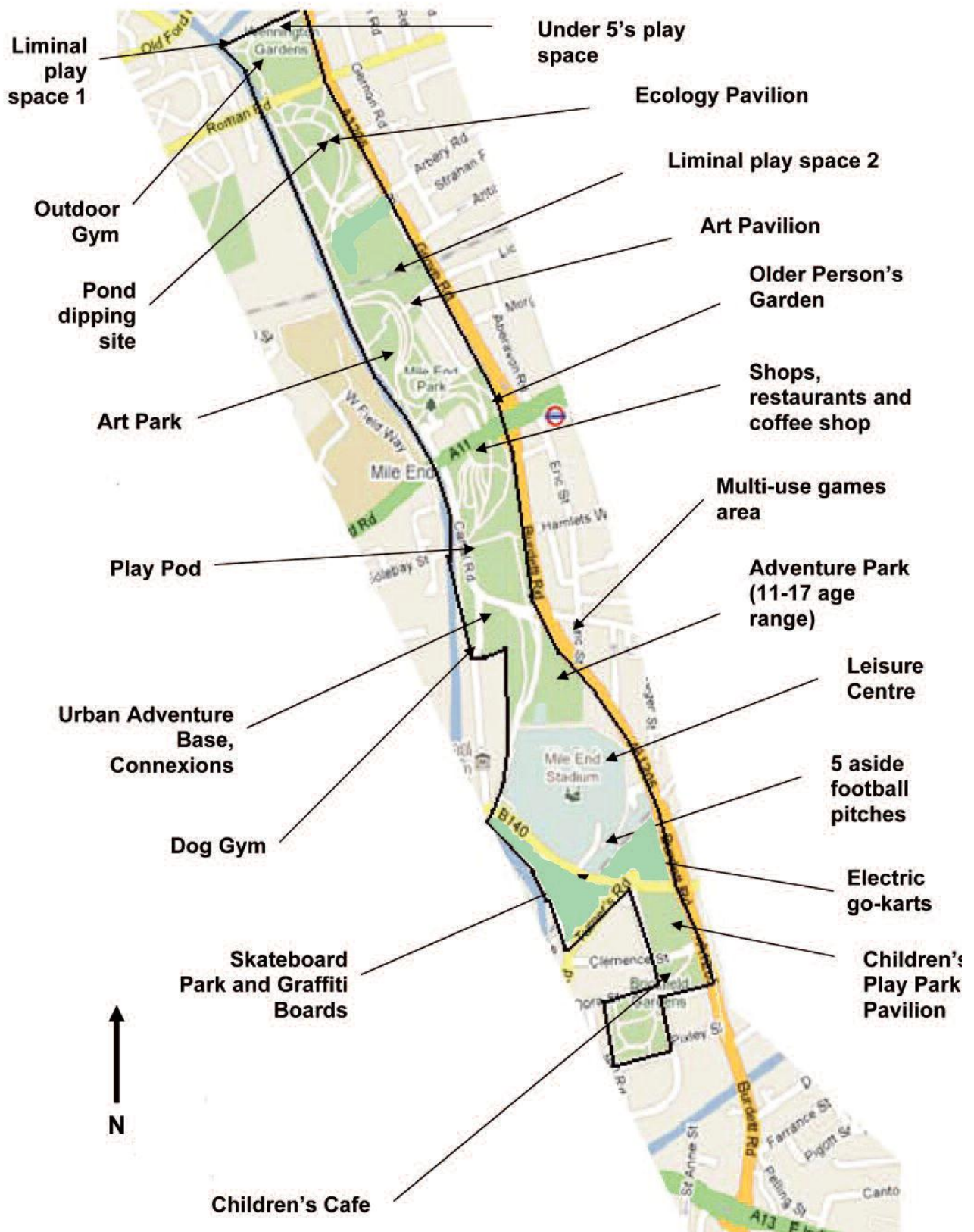
Spec. No.	Spec. Type	Description	Page
1.	AT	Athletics Areas	27
2.	AQ	Aquatic Areas	29
3.	BG	Bowling Greens	33
4.	CB	Carpet Bedding	44
5.	CL	Climbing Plants	50
6.	CP	Cricket Practice and Playing Facilities	52
7.	CR	Changing Room & Building Maintenance	56
8.	DB	Dog Hygiene Specification	61
9.	EL	Environmental Litter Collection	63
10.	FB	Seasonal Flower Bed Displays	67
11.	GC	Grass Cutting and Maintenance	78
12.	GR	Grass Establishment and Reinstatement	88
13.	HB	Hanging Baskets	96
14.	HE	Hedge Maintenance	101
15.	HP	Rugby Pitches	105
16.	LB	Emptying of Litter Bins	111
17.	MI	Miscellaneous Operations	113
18.	MP	Multipitch Maintenance	116
19.	NB	Naturalised Bulb Planting	118

20.	PA	Play Area Inspection & Maintenance	120
21.	PB	Perennial Borders	122
22.	PE	Hard Area & Pernicious Weed Control	126
23.	PG	Putting Greens	129
24.	PPL	Permanent Planters	137
25.	RB	Rose Beds	139
26.	RG	Rock Gardens	146
27.	SC	Football Pitches	150
28.	SH	Shrub Beds	160
29.	SP	Sweeping - Hard Surfaces	179

Spec. No.	Spec. Type	<i>Description</i>	Page
30.	SPW	Winter Maintenance - Hard Surfaces	181
31.	TC	Hard Surface Tennis Courts	182
32.	TP	Tree Base Maintenance	185
33.	WL	Woodland Maintenance	187

Appendix I

Map showing amenities in Mile End Park



Appendix J

Photo library



Teeny Weeny Halloweeny in November 2013



Cardboard City 2013



Day by the Seaside in Children's Playground, Summer 2013



Easter Egg Hunt, April 2013



Park After Dark, October 2013



Summer Festival in Childrens Playground, Summer 2013



Bird eye view of the Cascade Garden



The Ecology Lake, Ecology Park



The Ecology Lake, Ecology Park



Fishy Places, off Regents Canal



The Adizone, Wennington Green



Arts exhibition in Arts Pavilion, Arts Park



Concordia, Arches in Sports Park



Arts Mound, Arts Hill